

# STANDARD DEPARTURE CHART - INSTRUMENT (SID) - ICAO

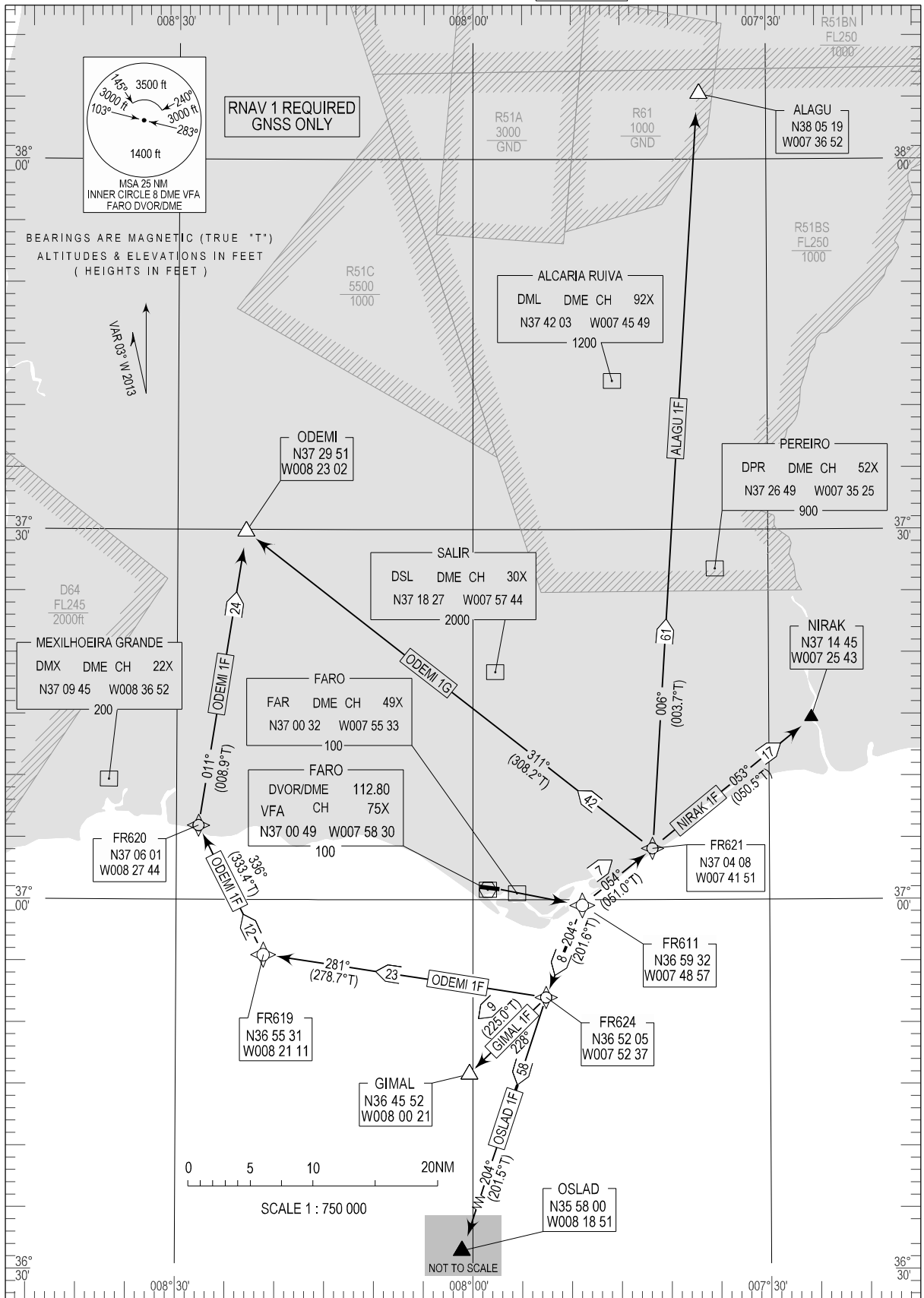
## FARO (LPFR)

### RNAV RWY 10

ALAGU 1F, GIMAL 1F, NIRAK 1F  
ODEMI 1F, ODEMI 1G, OSLAD 1F

TRANSITION ALTITUDE  
4000

TWR 120.750  
APP 119.400  
ACC 125.550



SID changed.

STANDARD INSTRUMENT DEPARTURE (SID) RUNWAY 10										
RNAV 1 – GNSS ONLY										
SID RNAV 1 ALAGU 1F RWY 10										
Procedure Coding Table										
Path Terminator	Waypoint			Course/ Track MAG (True)	Dist NM	Turn Direction	Constraints		Navigation Specification	Remarks
	Identifier	Flyover	Coordinates				Level	Speed		
CF	FR611	-	365932.20N 0074856.90W	103 (100.1)	-	-	-	-	RNAV 1	
TF	FR621	-	370408.29N 0074150.96W	054 (051.0)	7.31	Left	+3000ft	-	RNAV 1	
TF	ALAGU	-	380519.34N 0073652.27W	006 (003.7)	61.24	Left	-FL060	-	RNAV 1	

SID RNAV 1 NIRAK 1F RWY 10										
Path Terminator	Waypoint			Course/ Track MAG (True)	Dist NM	Turn Direction	Constraints		Navigation Specification	Remarks
	Identifier	Flyover	Coordinates				Level	Speed		
CF	FR611	-	365932.20N 0074856.90W	103 (100.1)	-	-	-	-	RNAV 1	
TF	FR621	-	370408.29N 0074150.96W	054 (051.0)	7.31	Left	+3000ft	-	RNAV 1	
TF	NIRAK	-	371445.00N 0072543.00W	053 (050.5)	16.69	-	-FL060	-	RNAV 1	

SID RNAV 1 ODEMI 1F RWY 10										
Path Terminator	Waypoint			Course/ Track MAG (True)	Dist NM	Turn Direction	Constraints		Navigation Specification	Remarks
	Identifier	Flyover	Coordinates				Level	Speed		
CF	FR611	-	365932.20N 0074856.90W	103 (100.1)	-	-	-	-	RNAV 1	
TF	FR624	-	365205.20N 0075236.86W	204 (201.6)	8.00	Right	-	-	RNAV 1	
TF	FR619	-	365531.42N 0082111.34W	281 (278.7)	23.18	Right	-	-	RNAV 1	
TF	FR620	-	370600.88N 0082744.37W	336 (333.4)	11.72	Right	-	-	RNAV 1	
TF	ODEMI	-	372951.02N 0082302.44W	011 (008.9)	24.10	Right	-FL060	-	RNAV 1	

SID RNAV 1 ODEMI1G RWY 10										
Path Terminator	Waypoint			Course/ Track MAG (True)	Dist NM	Turn Direction	Constraints		Navigation Specification	Remarks
	Identifier	Flyover	Coordinates				Level	Speed		
CF	FR611	-	365932.20N 0074856.90W	103 (100.1)	-	-	-	-	RNAV 1	
TF	FR621	-	370408.29N 0074150.96W	054 (051.0)	7.31	Left	+3000ft	-	RNAV 1	
TF	ODEMI	-	372951.02N 0082302.44W	311 (308.2)	41.72	Left	-FL060	-	RNAV 1	

SID RNAV 1 OSLAD1F										
Path Terminator	Waypoint			Course/ Track MAG (True)	Dist NM	Turn Direction	Constraints		Navigation Specification	Remarks
	Identifier	Flyover	Coordinates				Level	Speed		
CF	FR611	-	365932.20N 0074856.90W	103 (100.1)	-	-	-	-	RNAV 1	
TF	FR624	-	365205.20N 0075236.86W	204 (201.6)	8.00	Right	-	-	RNAV 1	
TF	OSLAD	-	355800.00N 0081851.00W	204 (201.5)	58.01	-	-FL060	-	RNAV 1	

SID RNAV 1 GIMAL1F										
Path Terminator	Waypoint			Course/ Track MAG (True)	Dist NM	Turn Direction	Constraints		Navigation Specification	Remarks
	Identifier	Flyover	Coordinates				Level	Speed		
CF	FR611	-	365932.20N 0074856.90W	103 (100.1)	-	-	-	-	RNAV 1	
TF	FR624	-	365205.19N 0075236.86W	204 (201.6)	8.00	Right	-	-	RNAV 1	
TF	GIMAL	-	364552.01N 0080021.09W	228 (225.0)	8.79	Right	-FL060	-	RNAV 1	