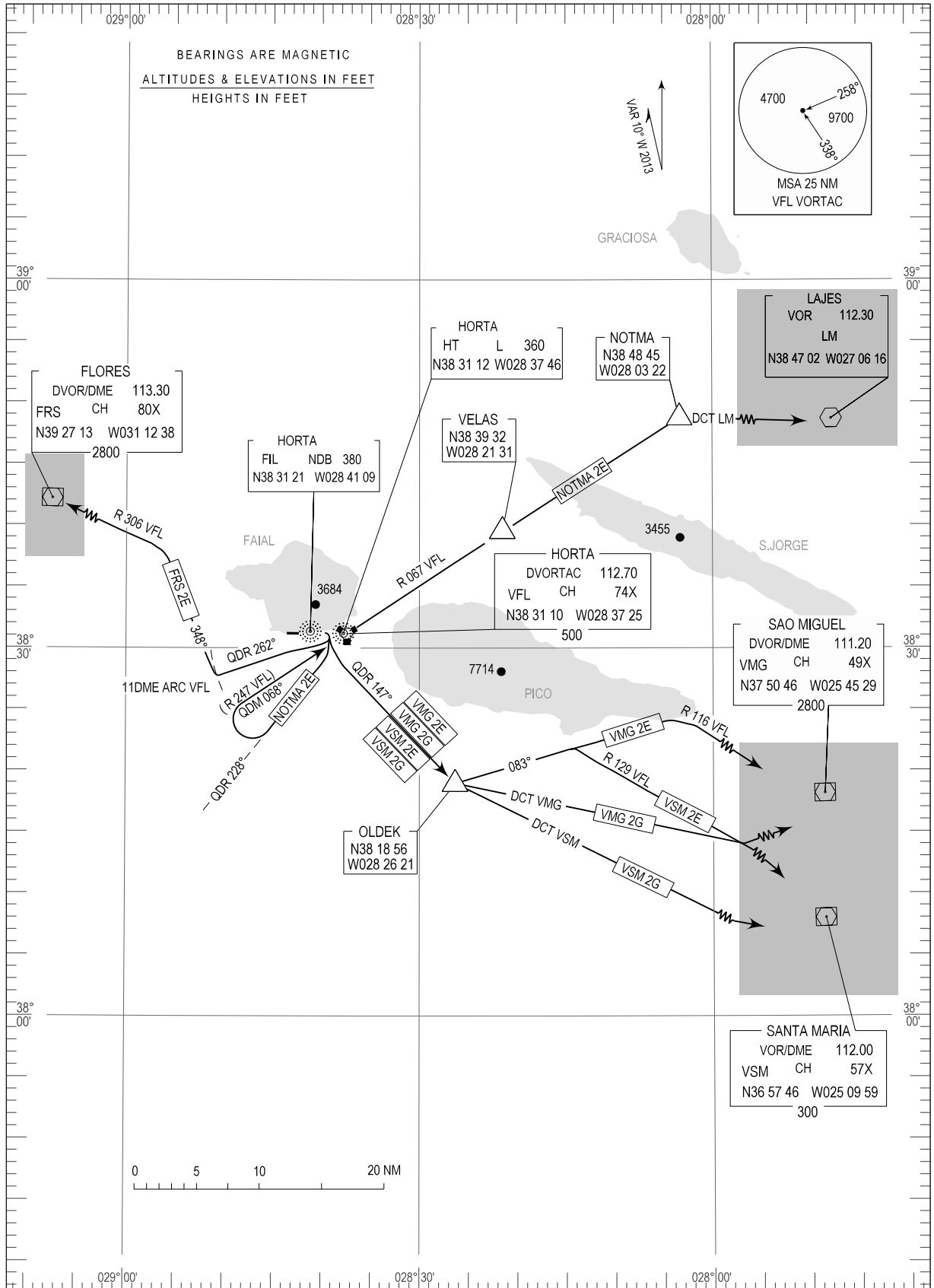


STANDARD DEPARTURE CHART -
INSTRUMENT (SID) - ICAO

TRANSITION ALTITUDE 5000
TWR 118.000
APP 120.600

HORTA (LPHR)
RWY 10
FRS 2E, VSM 2E, VSM 2G
VMG 2E, VMG 2G, NOTMA 2E



Page renumbered

STANDARD INSTRUMENT DEPARTURE (SID) RWY 10

RUNWAY 10		
Designator	Route	Remarks
FRS2E	Turn right to intercept HT Locator QDR 262; at VFL DME arc 11, turn right to track 348 to intercept VFL RDL306 to FRS at or above FL100 (FIL QDR 306 below FL100)	
VSM2E	Turn right to intercept FIL QDR 147 to OLDEK; at OLDEK turn left direct to track 083 to intercept VFL RDL 129 to VSM at or above FL100 (FIL QDR 129 below FL100)	Note - Do not overshoot QDR 147 (or VFL RDL155) to the East, before Point OLDEK. Cross OLDEK at or above 5000FT QNH.
VSM2G RNAV SID	Turn right to intercept FIL QDR 147 to OLDEK; at OLDEK turn left direct to VSM	Note - Do not overshoot QDR 147 (or VFL RDL155) to the East, before OLDEK. Cross OLDEK at or above 5000FT QNH
VMG2E	Turn right to intercept FIL NDB QDR 147 to OLDEK; at OLDEK turn left to track 083 to intercept VFL RDL 116 to VMG at or above FL100 (FIL QDR 116 below FL100)	Note - Do not overshoot QDR 147 (or VFL RDL155) to the East, before point OLDEK. Cross OLDEK at or above 5000FT.
VMG2G RNAV SID	Turn right to intercept FIL QDR 147 to OLDEK; at OLDEK turn left direct to VMG	Note - Do not overshoot QDR 147 (or VFL RDL 155) to the East, before OLDEK. Cross OLDEK at or above 5000FT.
NOTMA2E	Turn right to intercept HT Locator QDR 228. When passing 2500FT QNH turn right to intercept QDM 068 to HT Locator (RDL247 to VFL VORTAC at or above 5000FT). Continue on VFL RDL067 to NOTMA; from NOTMA proceed direct to LM.	Note - When inbound to HT/VFL cross at or above climbing : VFL DME Arc 5NM - 4000FT QNH. HT/VFL - 5000FT QNH