

STANDARD DEPARTURE CHART - INSTRUMENT (SID) - ICAO

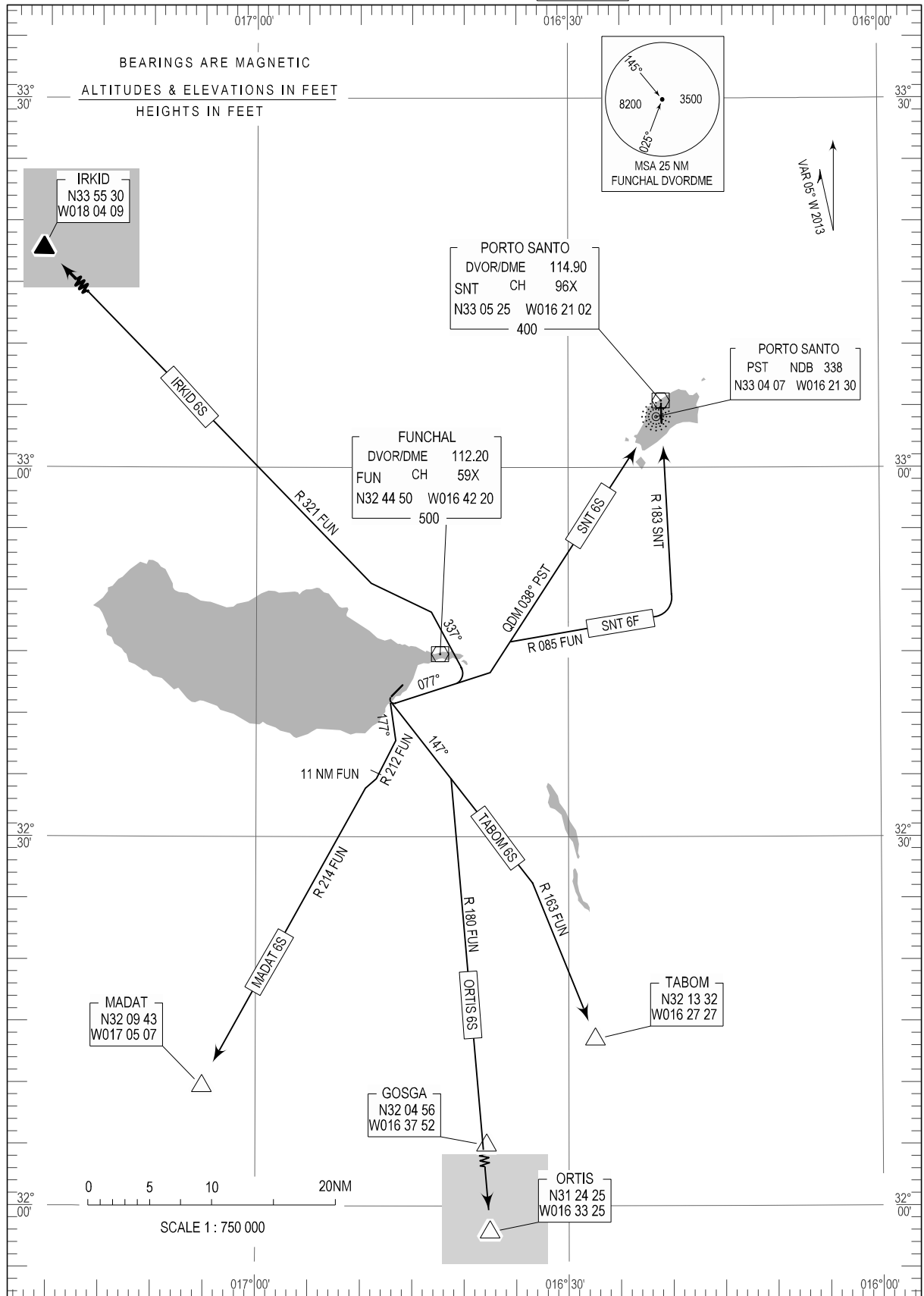
MADEIRA (LPMA)

RWY 23

TABOM 6S, IRKID 6S, MADAT 6S
SNT 6F, SNT 6S, ORTIS 6S

TRANSITION ALTITUDE
5000

TWR 118.350
APP 119.600
ATIS 130.350



ATIS FREQ changed

STANDARD INSTRUMENT DEPARTURE (SID) RWY 23

RUNWAY 23				
Designator	Route	After Take-off		Remarks
		Climb to ALT / FL	Contact	
IRKID6S	Proceed on MAG Track 077; after passing ABM FUN DVOR/DME (RDL168) and above 1500FT QNH turn left to MAG Track 337, keeping FUN DVOR/DME left hand on track; above 3000FT QNH intercept and proceed on RDL321 FUN DVOR/DME to IRKID	FL060	Madeira Approach 119.600MHZ	Do not overshoot RDL 321 FUN DVOR/DME to the South
MADAT6S	Proceed on MAG track 177; intercept and proceed on RDL 212 FUN DVOR/DME; after 11NM FUN DVOR/DME or above 3500FT QNH; intercept and proceed on RDL 214 FUN DVOR/DME to MADAT	FL060		
ORTIS6S	Proceed on MAG Track 147, intercept and proceed on RDL 180 FUN DVOR/DME to GOSGA - ORTIS.	FL060		
SANTO6F (SNT6F)	Proceed MAG track 077; after passing ABM FUN DVOR/DME (RDL168) or 1500FT QNH proceed on QDM 038 PST NDB; intercept and proceed on RDL 085 FUN DVOR/DME; intercept and proceed on RDL 183 to SNT DVOR/DME	FL060		Alternative to SNT6S to be used for landing at LPPS Runway 36. Keep beyond arc 3NM FUN DVOR/DME
SANTO6S (SNT6S)	Proceed on MAG Track 077, after passing ABM FUN DVOR/DME (RDL168) or 1500FT QNH proceed on QDM 038 PST NDB: proceed to SNT DVOR/DME	FL060		Keep beyond arc 3NM FUN DVOR/DME
TABOM6S	Proceed on track 147; intercept and proceed on RDL163 FUN DVOR/DME to TABOM	FL060		