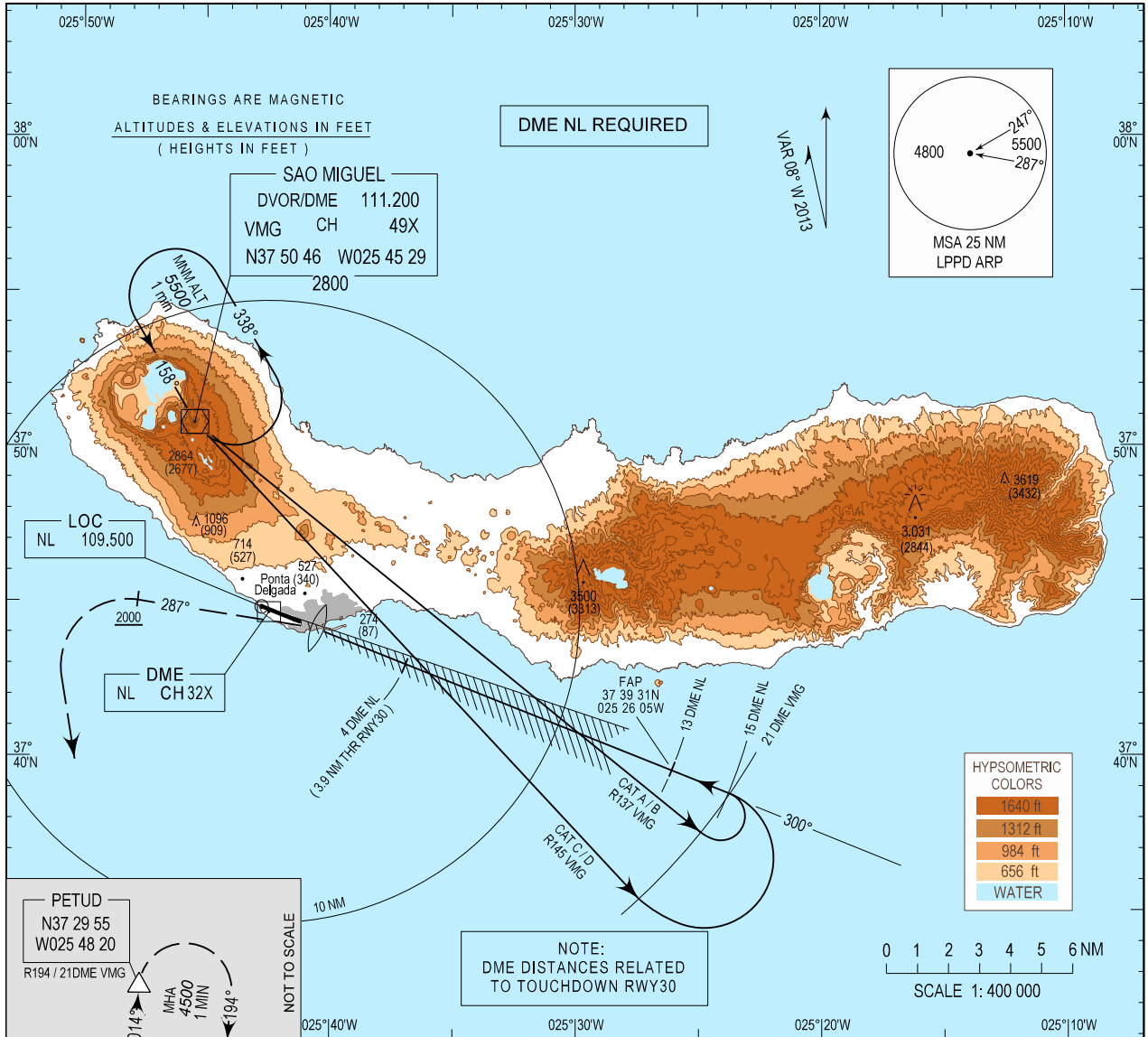


INSTRUMENT  
APPROACH  
CHART - ICAO

AD ELEV 259 ft  
HEIGHTS RELATED  
THR RWY 30 - ELEV 187 ft

APP 119.400  
TWR 118.300

PONTA DELGADA/LPPD  
ILS-Y  
RWY30



**PETUD**  
N37 29 55  
W025 48 20  
R194 / 21 DME VMG

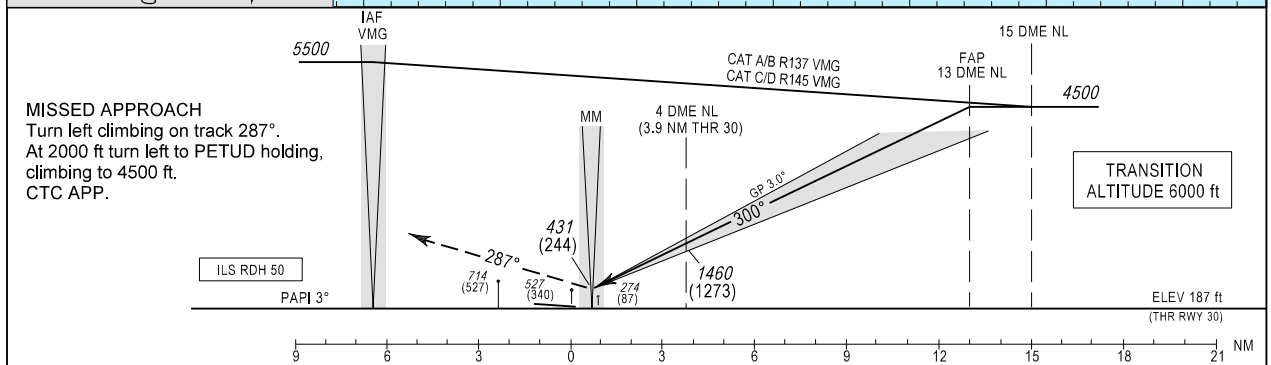
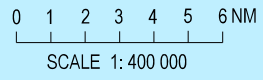
NOT TO SCALE

MHA 4500  
1 MIN

014°

194°

NOTE:  
DME DISTANCES RELATED  
TO TOUCHDOWN RWY30



**MISSED APPROACH**  
Turn left climbing on track 287°. At 2000 ft turn left to PETUD holding, climbing to 4500 ft. CTC APP.

TRANSITION  
ALTITUDE 6000 ft

CATEGORY		A	B	C	D
ILS	CAT I	408(221)	418(231)	428(241)	438(251)
	CAT II				
CIRCLING	NORTH RWY 30	NOT AUTHORIZED		NOT AUTHORIZED	
	SOUTH RWY 30	660	760	850	950

MSA changed. PETUD RDL and DIST inserted.