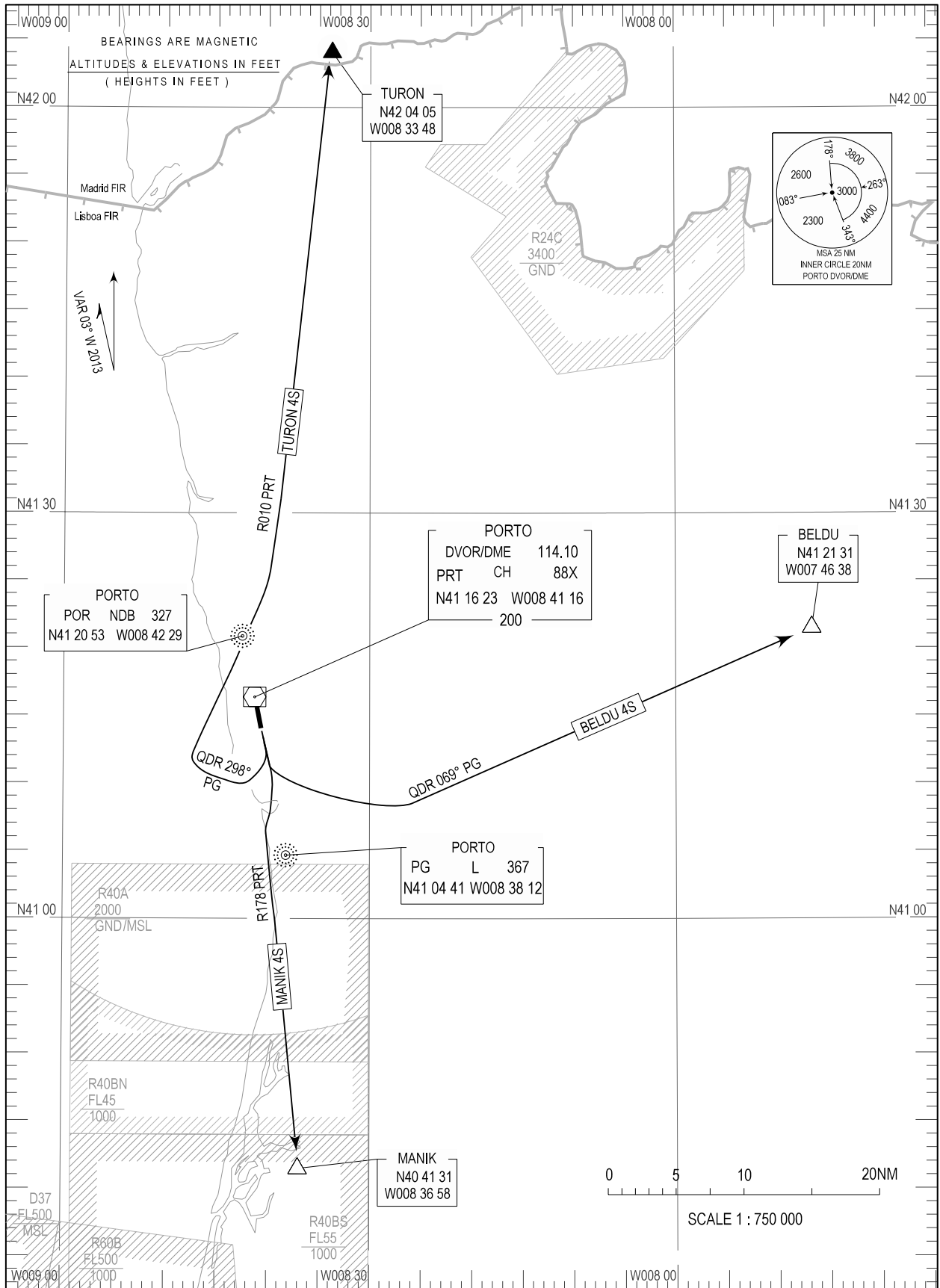


STANDARD DEPARTURE CHART -
INSTRUMENT (SID) - ICAO

TRANSITION ALTITUDE
4000

TWR 118.000
APP 121.100

PORTO (LPPR)
RWY 17
BELDU 4S, MANIK 4S, TURON 4S



New MAG Variation (2013). SIDs changed.

STANDARD INSTRUMENT DEPARTURE (SID) RWY 17

RUNWAY 17				
Designator	Route	After Take-off		Remarks
		Climb to ALT / FL	Contact	
BELDU 4S	Climb straight ahead. At 3000FT QNH turn left to intercept and proceed on QDR 069 DEG PG L to BELDU.	FL070	Porto Approach 121.100MHZ	
MANIK 4S	Climb straight ahead. At 3000FT QNH turn right and proceed on RDL 178 PRT DVOR/DME to MANIK.			
TURON 4S	Climb straight ahead. At 3000FT QNH turn right to intercept and proceed on QDR 298° PG L until passing 5000FT; then turn right to intercept and proceed on RDL 010 PRT DVOR/DME to TURON			