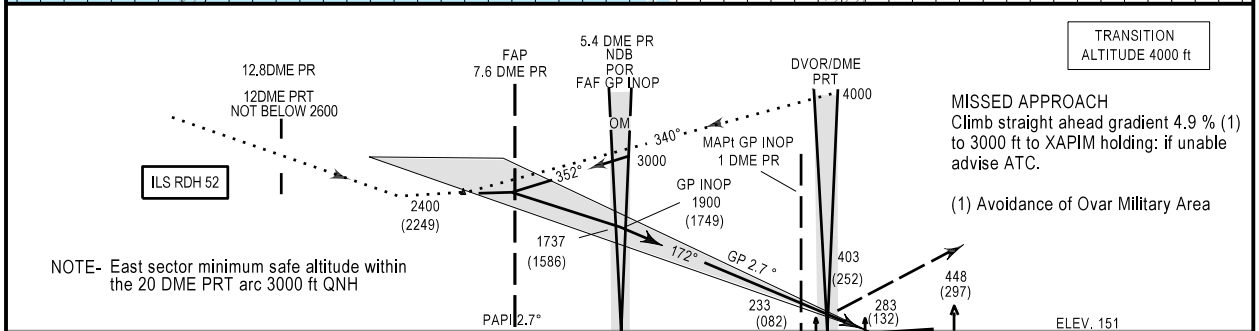
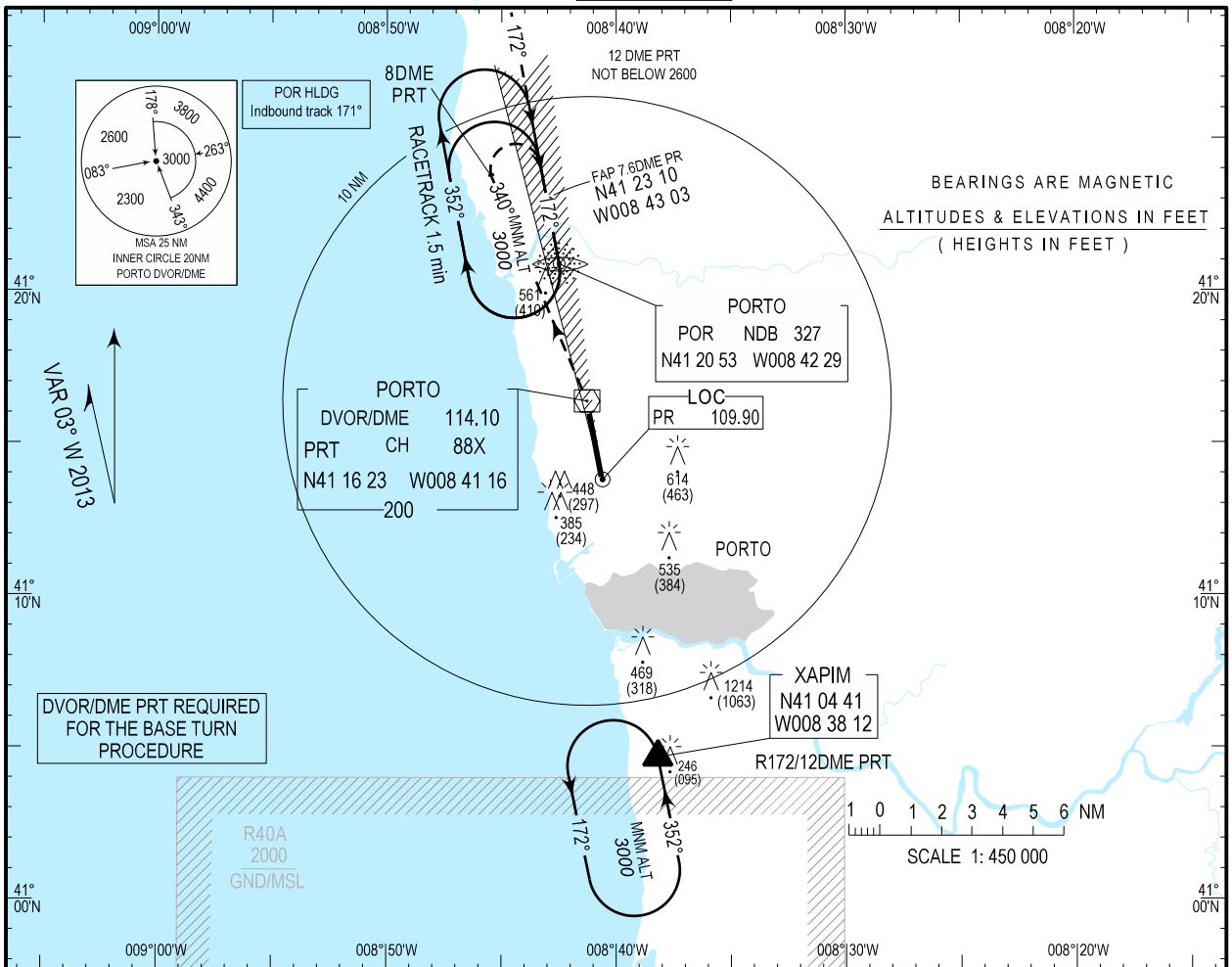


**INSTRUMENT  
APPROACH  
CHART - ICAO**

AD ELEV 227ft  
HEIGHTS RELATED  
THR RWY 17 -ELEV 151ft

APP 121.100  
TWR 118.000

**PORTO/LPPR**  
ILS  
RWY 17  
CAT A-B



OCA (H)			
CAT of ACFT	CAT A	CAT B	
ILS	CAT I	351 (200)	351 (200)
	CAT II	251 (100)	251 (100)
	GP INOP	590 (440)	
CIRCLING	EASTRWY1735	950	
	WESTRWY1735	950	

DME READING REFERS TO THE THR RWY 17								
DME PR	5	4	3	2				
ALTITUDE	1776	1461	1146	831				
GP INOP								
Speed	kt	80	100	120	140	160	180	200
POR to MAPT(4.4NM)	min : s	3:18	2:38	2:12	1:53	1:39	1:28	1:19
Rate of descent(5.2%)	ft / min	420	525	630	735	840	945	1050

Inserted Note (1) on MISSED APPROACH