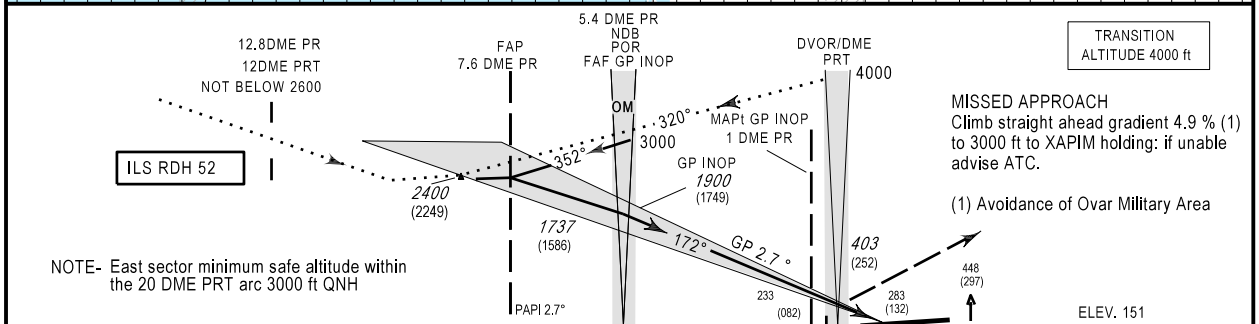
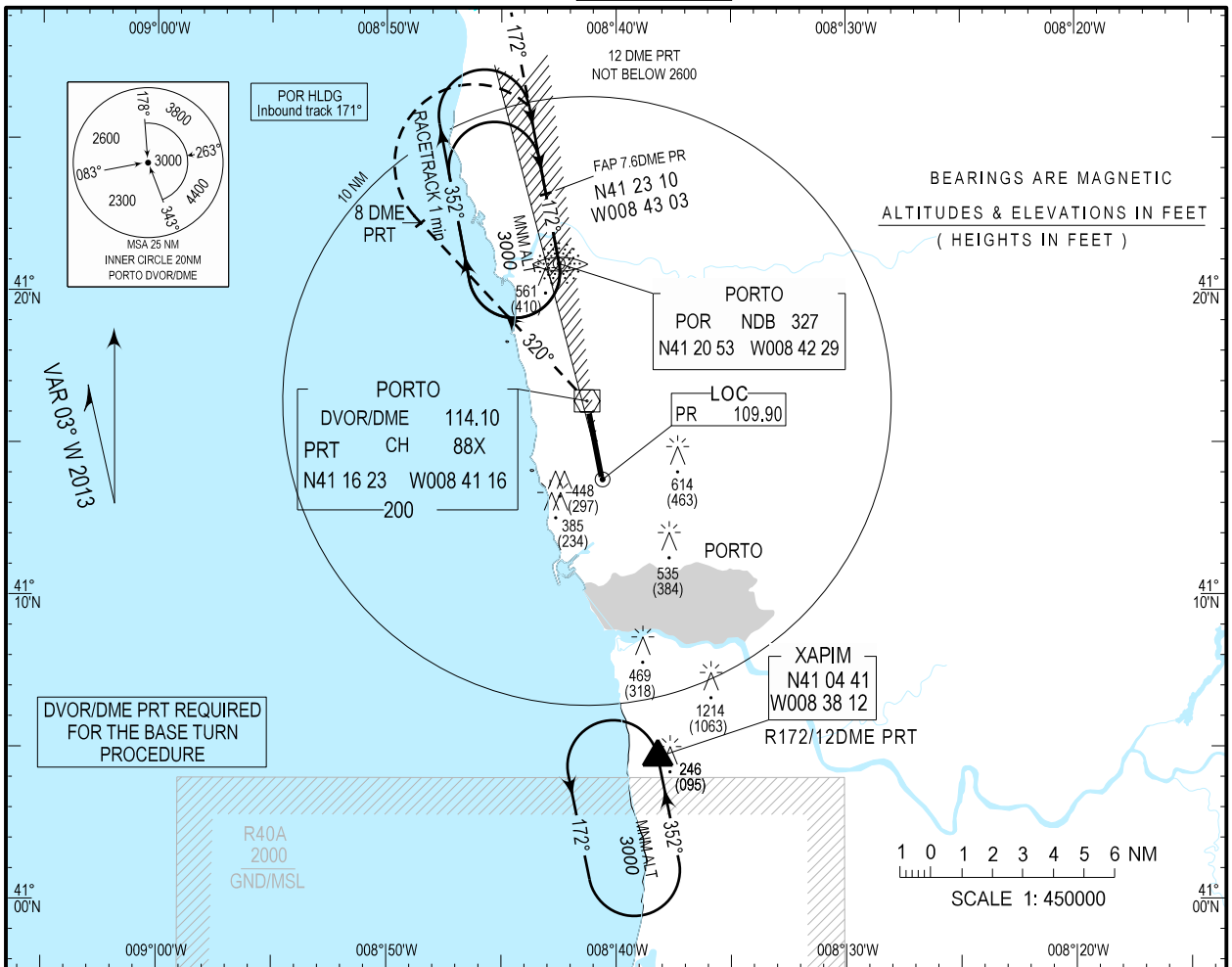


**INSTRUMENT
APPROACH
CHART - ICAO**

AD ELEV 227ft
HEIGHTS RELATED
THR RWY 17 -ELEV 151ft

APP 121.100
TWR 118.000

PORTO/LPPR
ILS
RWY17
CAT C-D



OCA (H)		
CAT of ACFT	CAT C	CAT D
ILS	CAT I	351 (200)
	CAT II	251 (100)
	GP INOP	590 (440)
CIRCLING	EASTRWY17/35	1280
	WESTRWY17/35	950

DME READING REFERS TO THE THR RWY 17

DME PR	5	4	3	2				
ALTITUDE	1776	1461	1146	831				
GP INOP								
Speed	kt	80	100	120	140	160	180	200
POR to MAP(4.4NM)	min : s	3:18	2:38	2:12	1:53	1:39	1:28	1:19
Rate of descent(5.2%)	ft / min	420	525	630	735	840	945	1050

Inserted Note (1) on MISSED APPROACH.