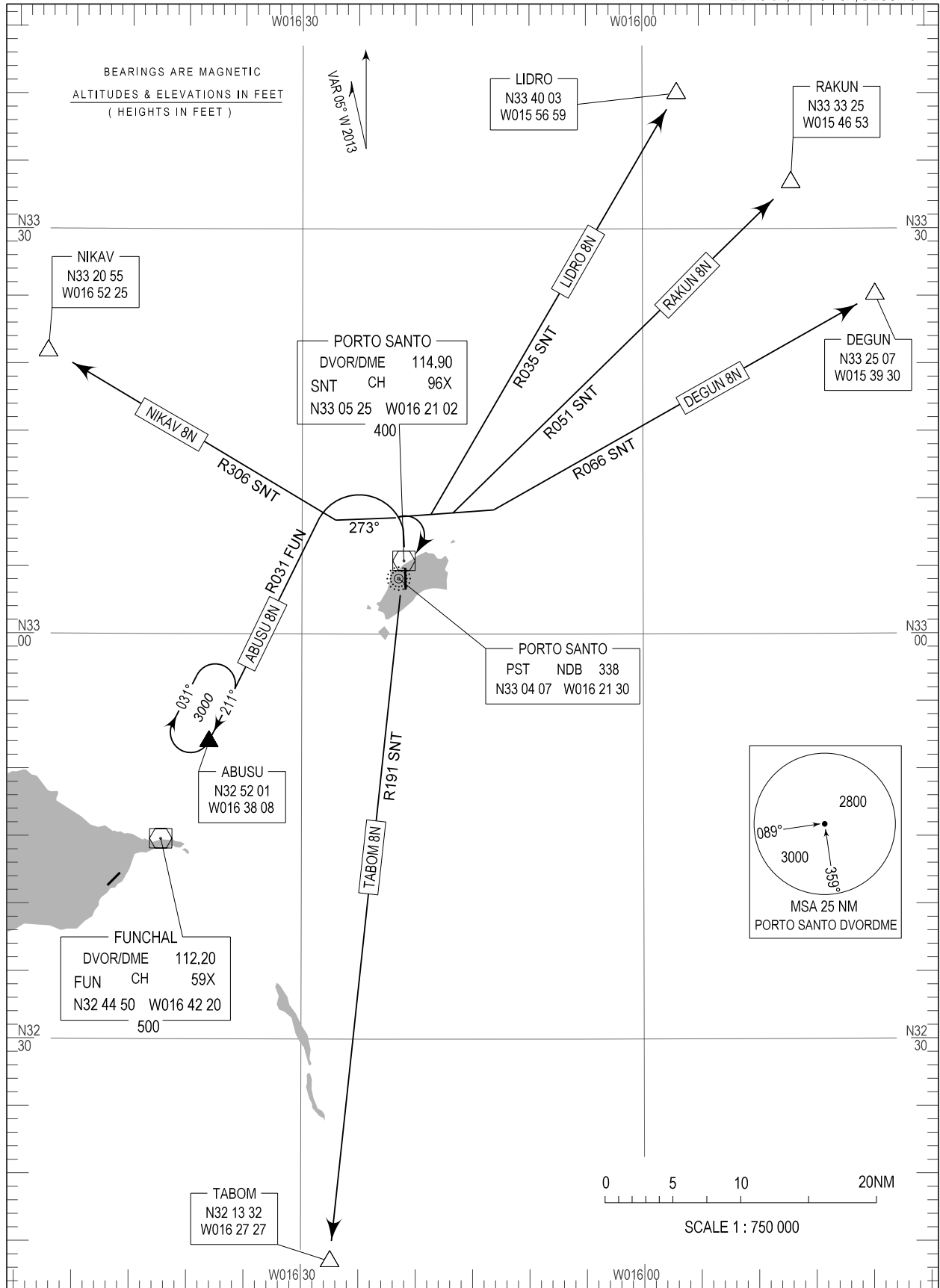


STANDARD DEPARTURE CHART -  
INSTRUMENT (SID) - ICAO

TRANSITION ALTITUDE  
5000

MADEIRA APP 119.600  
PORTO SANTO TWR 120.050

PORTO SANTO (LPPS)  
RWY 36  
TABOM 8N, ABUSU 8N, NIKAV 8N  
LIDRO 8N, RAKUN 8N, DEGUN 8N



New MAG Variation (2013). SIDs changed.

**STANDARD INSTRUMENT DEPARTURE (SID) RWY 36**

RUNWAY 36				
Designator	Route	After Take-off		Remarks
		Climb to ALT / FL	Contact	
ABUSU8N	Climb straight ahead; above 2500FT QNH turn left to intercept and proceed RDL031 FUN DVOR/DME, to Holding ABUSU	FL060	Madeira Approach 119.600MHZ	To be used pending traffic conditions
DEGUN8N	Climb straight ahead; above 3000FT QNH turn right to intercept and proceed on RDL066 SNT DVOR/DME to DEGUN	FL060		
LIDRO8N	Climb straight ahead; above 3000FT QNH turn right to intercept and proceed on RDL035 SNT DVOR/DME to LIDRO	FL060		
NIKAV8N	Climb straight ahead; after passing SNT DVOR/DME and above 1000FT QNH turn left to MAG Track 273 to intercept and proceed on RDL306 SNT DVOR/DME to NIKAV	FL060		
RAKUN8N	Climb straight ahead; above 3000ft QNH turn right to intercept and proceed on RDL051 SNT DVOR/DME to RAKUN	FL060		
TABOM8N	Climb straight ahead; above 3000FT QNH turn right to SNT DVOR/DME, intercept and proceed on RDL191 SNT DVOR/DME to TABOM	FL060		