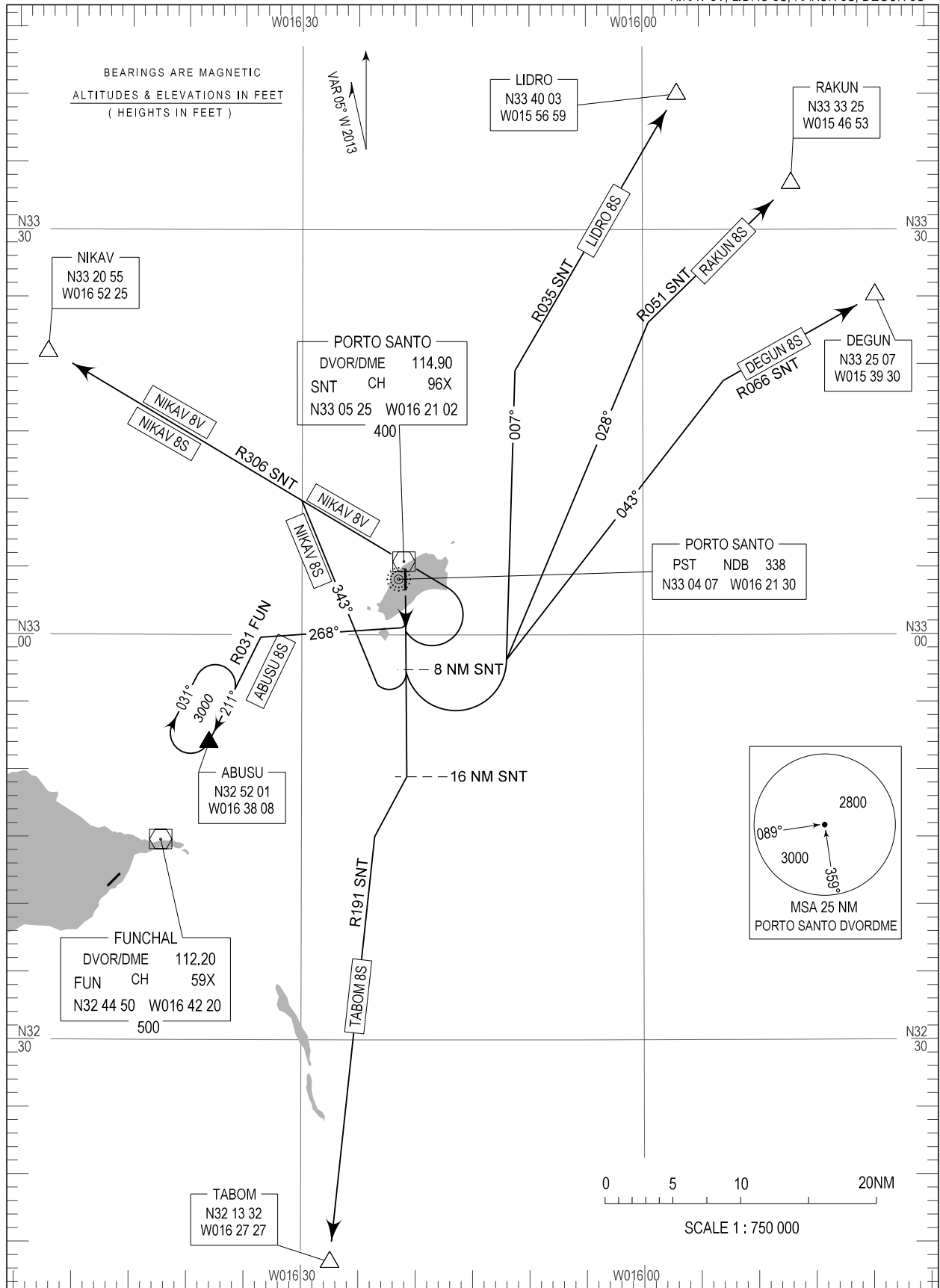


STANDARD DEPARTURE CHART -
INSTRUMENT (SID) - ICAO

TRANSITION ALTITUDE
5000

MADEIRA APP 119.600
PORTO SANTO TWR 120.050

PORTO SANTO (LPPS)
RWY 18
TABOM 8S, ABUSU 8S, NIKAV 8S
NIKAV 8V, LIDRO 8S, RAKUN 8S, DEGUN 8S



STANDARD INSTRUMENT DEPARTURE (SID) RWY 18

RUNWAY 18				
Designator	Route	After Take-off		Remarks
		Climb to ALT / FL	Contact	
ABUSU8S	Climb straight ahead; at 2000ft QNH turn right to MAG Track 268 intercept and proceed on RDL031 FUN DVOR/DME to Holding ABUSU	FL060	Madeira Approach 119.600MHZ	
DEGUN8S	Climb straight ahead; above 3000FT QNH turn left to MAG Track 043 to intercept and proceed on RDL066 SNT DVOR/DME to DEGUN	FL060		
LIDRO8S	Climb straight ahead; above 3000FT QNH turn left to MAG Track007 to intercept and proceed on RDL035 SNT DVOR/DME to LIDRO	FL060		To be used pending traffic conditions
NIKAV8V	Climb straight ahead; at 3000FT QNH turn left to SNT DVOR/DME, intercept and proceed on RDL306 SNT DVOR/DME to NIKAV	FL060		Alternative to NIKAV8S
NIKAV8S	Climb straight ahead; at 8NM SNT DVOR/DME or at 2000FT QNH, turn right to MAG Track 343 to intercept and proceed on RDL306 SNT DVOR/DME to NIKAV	FL060		
RAKUN8S	Climb straight ahead; above 3000FT QNH turn left to MAG Track 028 to intercept and proceed on RDL051 SNT DVOR/DME to RAKUN	FL060		To be used pending traffic conditions
TABOM8S	Climb straight ahead; at 16NM SNT DVOR/DME turn right to intercept and proceed on RDL191 SNT DVOR/DME to TABOM	FL060		