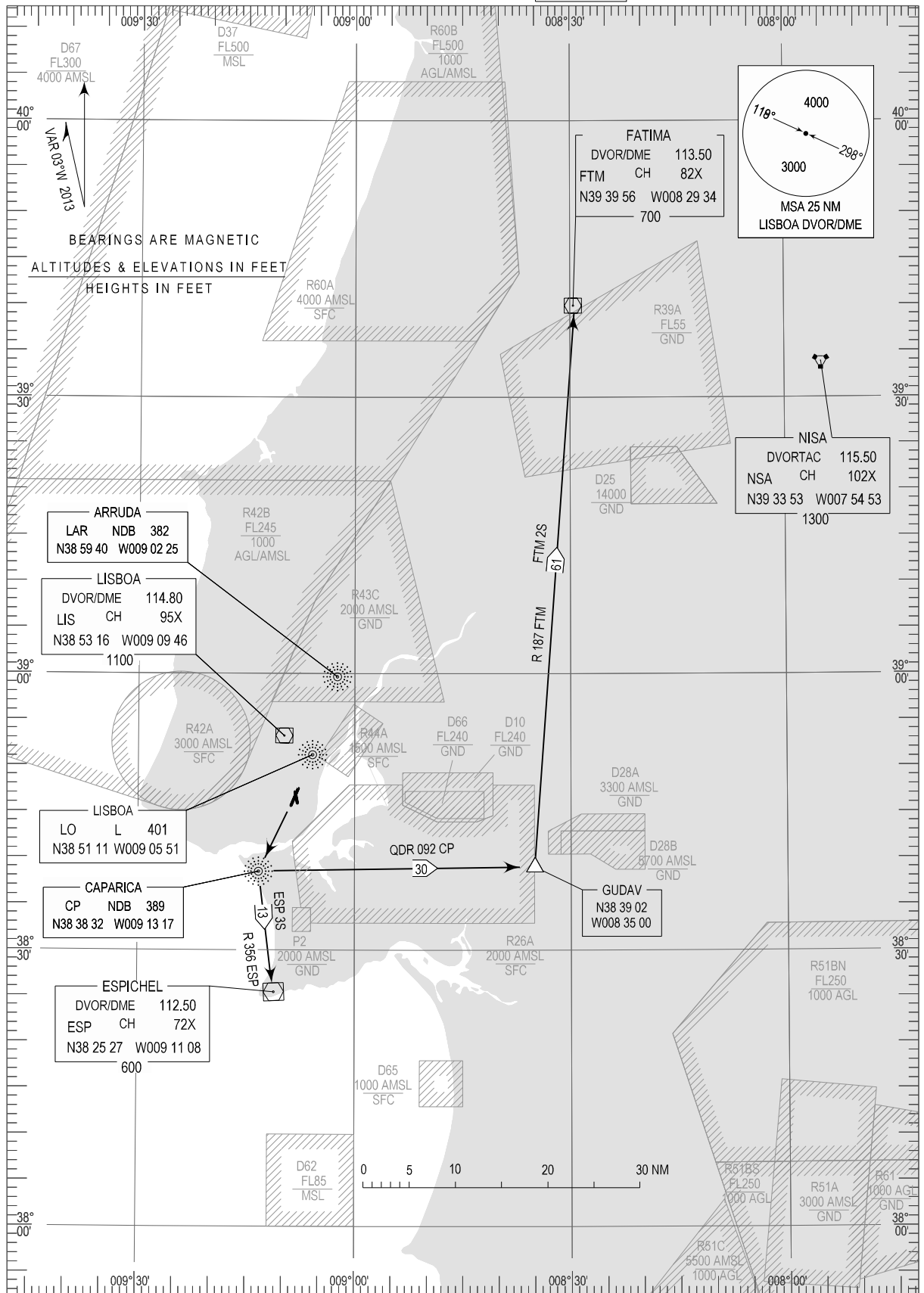


STANDARD DEPARTURE CHART -  
INSTRUMENT (SID) - ICAO

LISBOA (LPPT)  
RWY21  
ESP 3S, FTM 2S

TRANSITION ALTITUDE  
4000  
TWR 118.100  
APP 119.100  
ACC 125.125



Contact changed on page 2

STANDARD INSTRUMENT DEPARTURE (SID) RWY 21				
RUNWAY 21				
Designator	Route	After Take-off		Remarks
		Climb to ALT / FL	Contact	
ESP3S	Climb straight ahead to CP NDB, intercept and proceed on RDL356 to ESP DVOR/DME.	FL060	LISBOA APPROACH When passing 1000ft QNH mentioning only the callsign and passing altitude (119.100 MHz or 125.125MHz) as announced by ATIS departure	
FTM2S	Climb straight ahead to CP NDB, intercept and proceed on QDR092 CP NDB to GUDAV (to cross at FL060), intercept and proceed on RDL187 to FTM DVOR/DME.	FL060		