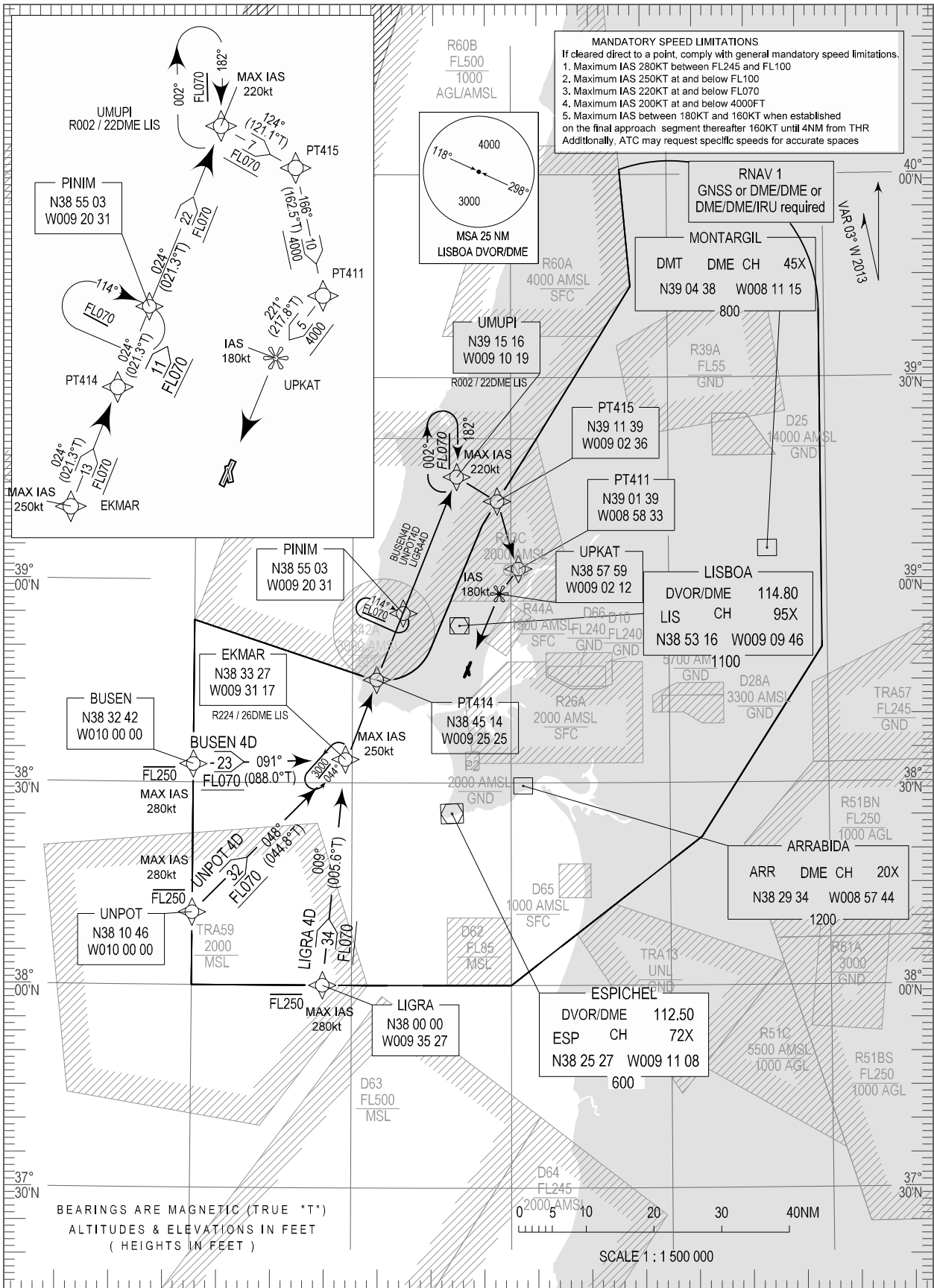


STANDARD ARRIVAL CHART - INSTRUMENT (STAR) - ICAO

TRANSITION ALTITUDE 4000

TWR 118.100  
APP 119.100  
ACC 125.125

LISBOA (LPPT)  
RNAV RWY 21  
BUSEN 4D, LIGRA 4D, UNPOT 4D



RNAV 1 GNSS or DME/DME/IRU required. STAR changed: BUSEN4D LIGRA4D UNPOT4D.

STANDARD INSTRUMENT ARRIVAL (STAR) RUNWAY 21										
RNAV 1 – GNSS or DME/DME or DME/DME/IRU										
STAR RNAV 1 BUSEN 4D RWY 21										
Procedure Coding Table										
Path Terminator	Waypoint			Course/Track MAG (True)	Dist NM	Turn Direction	Constraints		Nav Specs	Remarks
	Identifier	Flyover	Coordinates				Level	Speed		
IF	BUSEN	-	383326.56N 0093117.20W	-	-	-	-FL250	280Kt	RNAV 1	Clearance limit: UPKAT
TF	EKMAR	-	383326.56N 0093117.20W	091 (088.0)	22.54	-	+FL070	250Kt	RNAV 1	
TF	PT414	-	384513.74N 0092525.26W	024 (021.3)	12.64	Left	-	-	RNAV 1	
TF	PINIM	-	385502.70N 0092030.55W	024 (021.3)	10.53	-	-	-	RNAV 1	
TF	UMUPI	-	391516.46N 0091018.55W	024 (021.4)	21.72	-	-	220Kt	RNAV 1	
TF	PT415	-	391139.36N 0090235.77W	124 (121.1)	7.00	Right	+FL070	-	RNAV 1	
TF	PT411	-	390139.34N 0085833.34W	166 (162.5)	10.48	Right	-	-	RNAV 1	
TF	UPKAT	-	385759.04N 0090212.05W	221 (217.8)	4.64	Right	+4000ft	180Kt	RNAV 1	

STAR RNAV 1 LIGRA 4D RWY 21										
Path Terminator	Waypoint			Course/Track MAG (True)	Dist NM	Turn Direction	Constraints		Nav Specs	Remarks
	Identifier	Flyover	Coordinates				Level	Speed		
IF	LIGRA	-	380000.00N 0093527.06W	-	-	-	-FL250	280Kt	RNAV 1	Clearance limit: UPKAT
TF	EKMAR	-	383326.56N 0093117.20W	009 (005.6)	33.57	-	-	250Kt	RNAV 1	
TF	PT414	-	384513.74N 0092525.26W	024 (021.3)	12.64	Right	+FL070	-	RNAV 1	
TF	PINIM	-	385502.70N 0092030.55W	024 (021.3)	10.53	-	-	-	RNAV 1	
TF	UMUPI	-	391516.46N 0091018.55W	024 (021.4)	21.72	-	-	220Kt	RNAV 1	
TF	PT415	-	391139.36N 0090235.77W	124 (121.1)	7.00	Right	+FL070	-	RNAV 1	
TF	PT411	-	390139.34N 0085833.34W	166 (162.5)	10.48	Right	-	-	RNAV 1	
TF	UPKAT	-	385759.04N 0090212.05W	221 (217.8)	4.64	Right	+4000ft	180Kt	RNAV 1	

STAR RNAV 1 UNPOT 4D RWY 21										
Path Terminator	Waypoint			Course/Track MAG (True)	Dist NM	Turn Direction	Constraints		Nav Specs	Remarks
	Identifier	Flyover	Coordinates				Level	Speed		
IF	UNPOT	-	381045.63N 0100000.00W	-	-	-	-FL250	280Kt	RNAV 1	Clearance limit: UPKAT
TF	EKMAR	-	383326.56N 0093117.20W	048 (044.8)	31.99	-	-	250Kt	RNAV 1	
TF	PT414	-	384513.74N 0092525.26W	024 (021.3)	12.64	Right	+FL070	-	RNAV 1	
TF	PINIM	-	385502.70N 0092030.55W	024 (021.3)	10.53	-	-	-	RNAV 1	
TF	UMUPI	-	391516.46N 0091018.55W	024 (021.4)	21.72	-	-	220Kt	RNAV 1	
TF	PT415	-	391139.36N 0090235.77W	124 (121.1)	7.00	Right	+FL070	-	RNAV 1	
TF	PT411	-	390139.34N 0085833.34W	166 (162.5)	10.48	Right	-	-	RNAV 1	
TF	UPKAT	-	385759.04N 0090212.05W	221 (217.8)	4.64	Right	+4000ft	180Kt	RNAV 1	