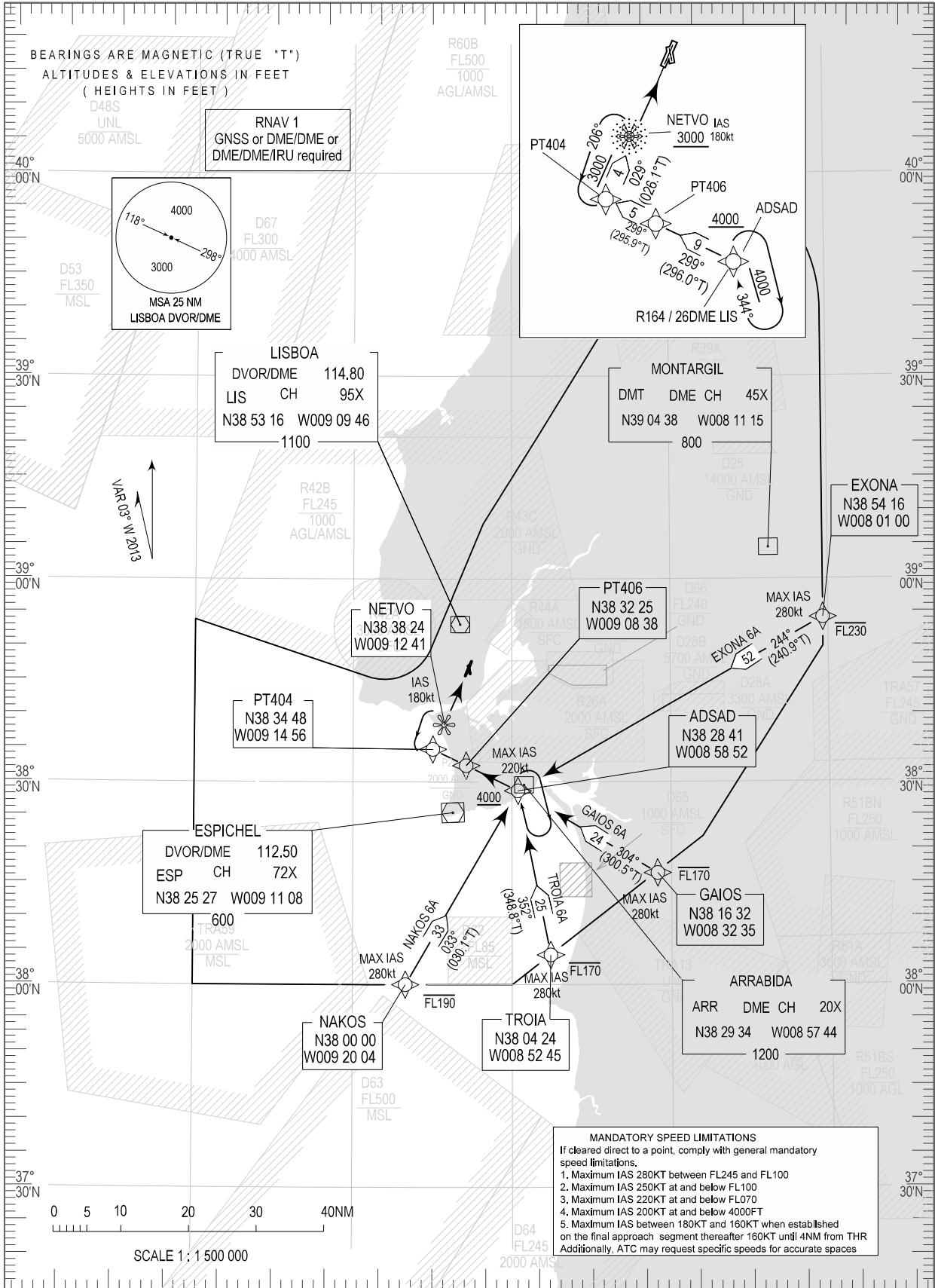


STANDARD ARRIVAL CHART -  
INSTRUMENT (STAR) - ICAO

TRANSITION ALTITUDE  
4000

TWR 118.100  
APP 119.100  
ACC 125.125

LISBOA (LPPT)  
RNAV RWY 03/35  
EXONA 6A, GAIOS 6A, NAKOS 6A, TROIA 6A



Nav Specs change on next page.

STANDARD INSTRUMENT ARRIVAL (STAR) RUNWAY 03/35										
RNAV 1 – GNSS or DME/DME or DME/DME/IRU										
STAR RNAV 1 EXONA 6A RWY 03/35										
Procedure Coding Table										
Path Terminator	Waypoint			Course/Track MAG (True)	Dist NM	Turn Direction	Constraints		Nav Specs	Remarks
	Identifier	Flyover	Coordinates				Level	Speed		
IF	EXONA	-	385415.89N 0080100.00W	-	-	-	-FL230	280kt	RNAV 1	Clearance limit: NETVOClearance limit: NETVOClearance limit: NETVO
TF	ADSAD	-	382840.65N 0085852.27W	244 (240.9)	52.02	-	+4000ft	220kt	RNAV 1	
TF	PT406	-	383224.59N 0090837.99W	299 (296.0)	8.52	Right	-	-	RNAV 1	
TF	PT404	-	383448.40N 0091455.61W	299 (296.0)	5.49		+3000ft		RNAV 1	
TF	NETVO	-	383824.16N 0091241.03W	029 (026.1)	4.00	Right	+3000ft	180kt	RNAV 1	

STAR RNAV 1 GAIOS 6A RWY 03/35										
Path Terminator	Waypoint			Course/Track MAG (True)	Dist NM	Turn Direction	Constraints		Nav Specs	Remarks
	Identifier	Flyover	Coordinates				Level	Speed		
IF	GAIOS	-	381631.88N 0083235.19W	-	-	-	-FL170	280kt	RNAV 1	Clearance limit: NETVOClearance limit: NETVOClearance limit: NETVO
TF	ADSAD	-	382840.65N 0085852.27W	304 (300.6)	23.97	-	+4000ft	220kt	RNAV 1	
TF	PT406	-	383224.59N 0090837.99W	299 (296.0)	8.52		-	-	RNAV 1	
TF	PT404	-	383448.40N 0091455.61W	299 (296.0)	5.49		+3000ft	-	RNAV 1	
TF	NETVO	-	383824.16N 0091241.03W	029 (026.1)	4.00	Right	+3000ft	180kt	RNAV 1	

STAR RNAV 1 NAKOS 6A RWY 03/35										
Path Terminator	Waypoint			Course/Track MAG (True)	Dist NM	Turn Direction	Constraints		Nav Specs	Remarks
	Identifier	Flyover	Coordinates				Level	Speed		
IF	NAKOS	-	380000.00N 0092004.18W	-	-	-	-FL190	280kt	RNAV 1	Clearance limit: NETVOClearance limit: NETVO
TF	ADSAD	-	382840.65N 0085852.27W	033 (030.1)	33.16	-	+4000ft	220kt	RNAV 1	
TF	PT406	-	383224.59N 0090837.99W	299 (296.0)	8.52	Left	-	-	RNAV 1	
TF	PT404	-	383448.40N 0091455.61W	299 (296.0)	5.49	-	+3000ft	-	RNAV 1	
TF	NETVO	-	383824.16N 0091241.03W	029 (026.1)	4.00	Right	+3000ft	180kt	RNAV 1	

STAR RNAV 1 TROIA 6A RWY 03/35										
Path Terminator	Waypoint			Course/Track MAG (True)	Dist NM	Turn Direction	Constraints		Nav Specs	Remarks
	Identifier	Flyover	Coordinates				Level	Speed		
IF	TROIA	-	380423.71N 0085244.95W	-	-	-	-FL170	280kt	RNAV 1	Clearance limit: NETVOClearance limit: NETVO
TF	ADSAD	-	382840.65N 0085852.27W	352 (348.8)	24.73	-	+4000ft	220kt	RNAV 1	
TF	PT406	-	383224.59N 0090837.99W	299 (296.0)	8.52	Left	-	-	RNAV 1	
TF	PT404	-	383448.40N 0091455.61W	299 (296.0)	5.49	-	+3000ft	-	RNAV 1	
TF	NETVO	-	383824.16N 0091241.03W	029 (026.1)	4.00	Right	+3000ft	180kt	RNAV 1	