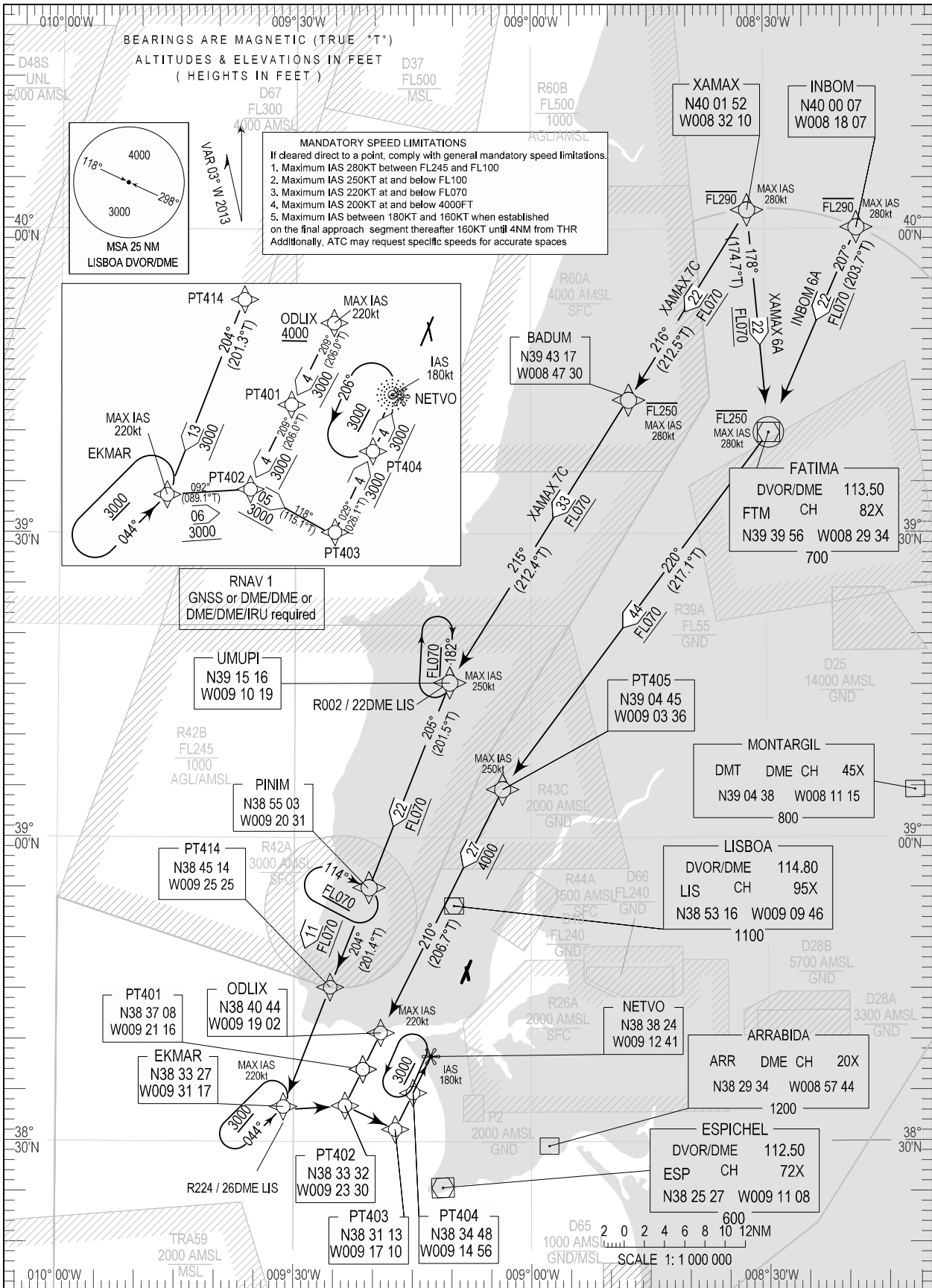


STANDARD ARRIVAL CHART -
INSTRUMENT (STAR) - ICAO

TRANSITION ALTITUDE
4000

TWR 118.100
APP 119.100
ACC 125.125

LISBOA (LPPT)
RNAV RWY 03/35
INBOM 6A, XAMAX 6A, XAMAX 7C



RNAV 1 GNSS or DME/DME or DME/DME/IRU required. STAR changed: INBOM6A XAMAX6A XAMAX7C.

STANDARD INSTRUMENT ARRIVAL (STAR) RUNWAY 03/35										
RNAV 1 – GNSS or DME/DME or DME/DME/IRU										
STAR RNAV 1 INBOM 6A RWY 03/35										
Procedure Coding Table										
Path Terminator	Waypoint			Course/Track MAG (True)	Dist NM	Turn Direction	Constraints		Nav Specs	Remarks
	Identifier	Flyover	Coordinates				Level	Speed		
IF	INBOM	-	400006.91N 0081807.21W	-	-	-	-FL290	280Kt	RNAV 1	Clearance limit: NETVO
TF	FTM	Yes	393956.45N 0082933.54W	207 (203.7)	22.00	-	-FL250	280Kt	RNAV 1	
TF	PT405	-	390444.84N 0090336.13W	220 (217.1)	43.97	Right	+FL070	250kt	RNAV 1	
TF	ODLIX	-	384044.12N 0091901.50W	210 (206.7)	26.84	Left	+4000ft	220kt	RNAV 1	
TF	PT401	-	383708.25N 0092115.83W	209 (206.0)	4.00	-	-	-	RNAV 1	
TF	PT402	-	383332.33N 0092329.94W	209 (206.0)	4.00	-	-	-	RNAV 1	
TF	PT403	-	383112.60N 0091709.97W	118 (115.1)	5.49	Left	-	-	RNAV 1	
TF	PT404	-	383448.40N 0091455.61W	029 (026.0)	4.00	Left	+3000ft	-	RNAV 1	
TF	NETVO	-	383824.16N 0091241.03W	029 (026.1)	4.00	-	+3000ft	180kt	RNAV 1	

STAR RNAV 1 XAMAX 6A RWY 03/35										
Path Terminator	Waypoint			Course/Track MAG (True)	Dist NM	Turn Direction	Constraints		Nav Specs	Remarks
	Identifier	Flyover	Coordinates				Level	Speed		
IF	XAMAX	-	400151.96N 0083210.34W	-	-	-	-FL290	280Kt	RNAV 1	Clearance limit: NETVO
TF	FTM	Yes	393956.45N 0082933.54W	178 (174.7)	22.00	-	-FL250	280Kt	RNAV 1	
TF	PT405	-	390444.84N 0090336.13W	220 (217.1)	43.97	Right	+FL070	250kt	RNAV 1	
TF	ODLIX	-	384044.12N 0091901.50W	210 (206.7)	26.84	Left	+4000ft	220kt	RNAV 1	
TF	PT401	-	383708.25N 0092115.83W	209 (206.0)	4.00	-	-	-	RNAV 1	
TF	PT402	-	383332.33N 0092329.94W	209 (206.0)	4.00	-	-	-	RNAV 1	
TF	PT403	-	383112.60N 0091709.97W	118 (115.1)	5.49	Left	-	-	RNAV 1	
TF	PT404	-	383448.40N 0091455.61W	029 (026.0)	4.00	Left	+3000ft	-	RNAV 1	
TF	NETVO	-	383824.16N 0091241.03W	029 (026.1)	4.00	-	+3000ft	180kt	RNAV 1	

STAR RNAV 1 XAMAX 7C RWY 03/35										
Path Terminator	Waypoint			Course/Track MAG (True)	Dist NM	Turn Direction	Constraints		Nav Specs	Remarks
	Identifier	Flyover	Coordinates				Level	Speed		
IF	XAMAX	-	400151.96N 0083210.34W	-	-	-	-FL290	280Kt	RNAV 1	Clearance limit: NETVO. To be used pending on military conditions
TF	BADUM	-	394317.16N 0084730.26W	216 (212.5)	22.00	-	-FL250	280Kt	RNAV 1	
TF	UMUPI	-	391516.46N 0091018.55W	215 (212.4)	33.09	-	-	250kt	RNAV 1	
TF	PINIM	-	385502.70N 0092030.55W	205 (201.5)	21.72	Left	-	-	RNAV 1	
TF	PT414	-	384513.74N 0092525.26W	204 (201.4)	10.53	-	+FL070	-	RNAV 1	
TF	EKMAR	-	383326.56N 0093117.20W	204 (201.3)	12.64	-	+3000ft	220kt	RNAV 1	
TF	PT402	-	383332.33N 0092329.94W	092 (089.1)	6.11	Left	-	-	RNAV 1	
TF	PT403	-	383112.60N 0091709.97W	118 (115.1)	5.49	Right	-	-	RNAV 1	
TF	PT404	-	383448.40N 0091455.61W	029 (026.0)	4.00	Left	-	-	RNAV 1	
TF	NETVO	-	383824.16N 0091241.03W	029 (026.1)	4.00	-	+3000ft	180kt	RNAV 1	