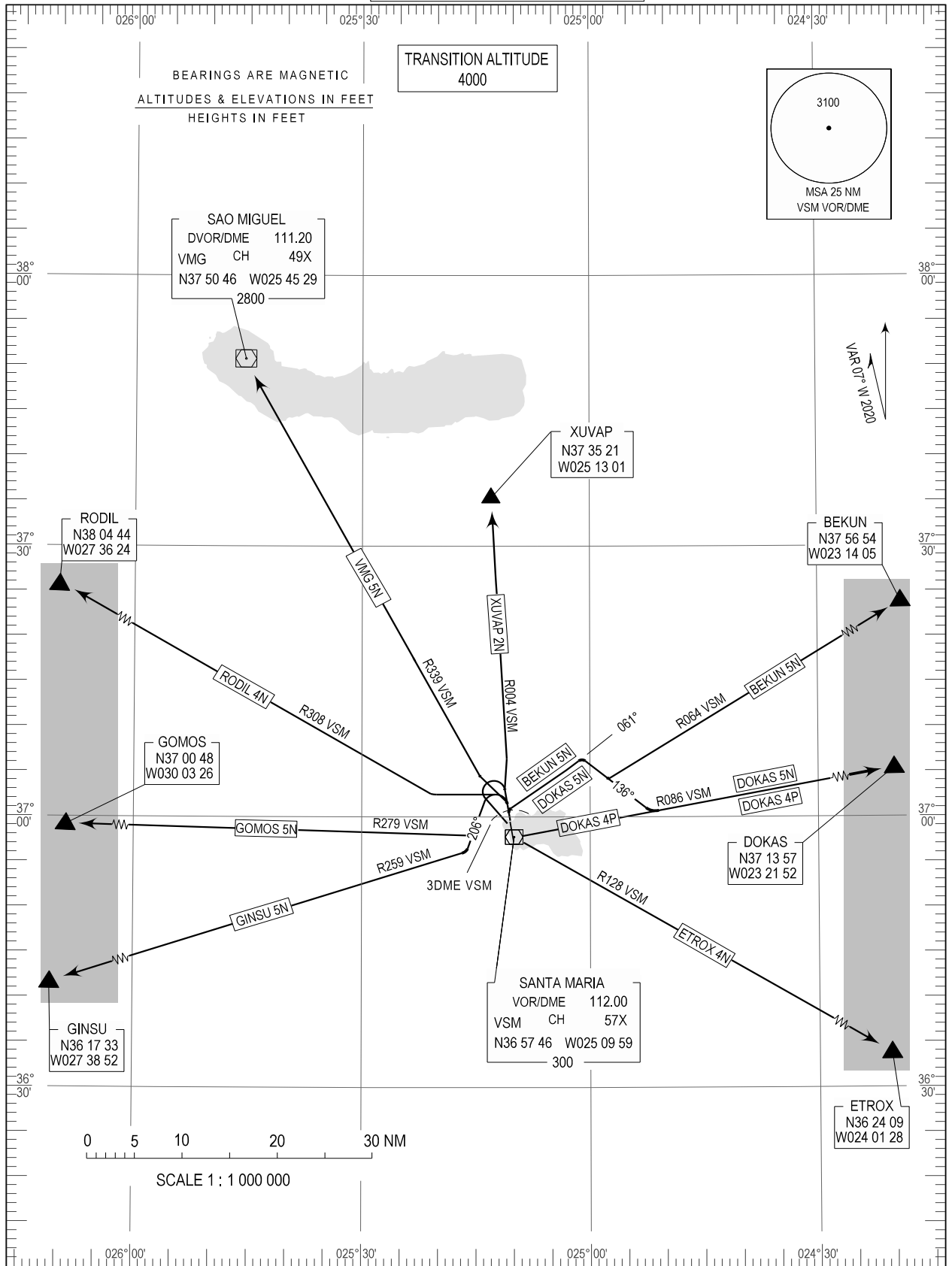


STANDARD DEPARTURE CHART -  
INSTRUMENT (SID) - ICAO

SANTA MARIA (LPAZ)  
RWY36

SANTA MARIA TOWER 118.100  
PONTA DELGADA APPROACH 119.400  
SANTA MARIA RADAR 132.150

BEKUN 5N, DOKAS 5N, DOKAS 4P, ETROX 4N, GINSU 5N  
GOMOS 5N, RODIL 4N, VMG 5N, XUVAP 2N



MAGVAR updated.

Santa Maria STANDARD INSTRUMENT DEPARTURE (SID) RWY 36

RUNWAY 36		
Designator	Route	Remarks
BEKUN 5N	Maintain take-off heading, at DME 3 VSM turn right to track 061, at 3100FT QNH turn right to track 136 to intercept VSM RDL 064 to BEKUN.	-
DOKAS 5N	Maintain take-off heading, at DME 3 VSM turn right to track 061, at 3100FT QNH turn right to track 136 to intercept VSM RDL 086 to DOKAS.	-
DOKAS 4P	Maintain take-off heading until 1500FT QNH, then turn left to VSM VOR and proceed on VSM RDL 086 to DOKAS.	Note: cross VSM VOR at or above 3100FT QNH climbing.
ETROX 4N	Maintain take-off heading until 1500FT QNH, then turn left to VSM VOR and proceed on VSM RDL 128 to ETROX.	Note: cross VSM VOR at or above 3100FT QNH climbing.
GINSU 5N	Maintain take-off heading until 1500FT QNH, then turn left to track 206 to intercept VSM RDL 259 to GINSU.	-
GOMOS 5N	Maintain take-off heading until 1500FT QNH, then turn left to track 206 to intercept VSM RDL 279 to GOMOS.	-
RODIL 4N	Maintain take-off heading until 1500FT QNH, then turn left to intercept VSM RDL 308 to RODIL.	-
VMG 5N	Maintain take-off heading until 1500FT QNH, then turn left to intercept VSM RDL 339 to VMG.	-
XUVAP 2N	Intercept and proceed on VSM RDL 004 to XUVAP.	-