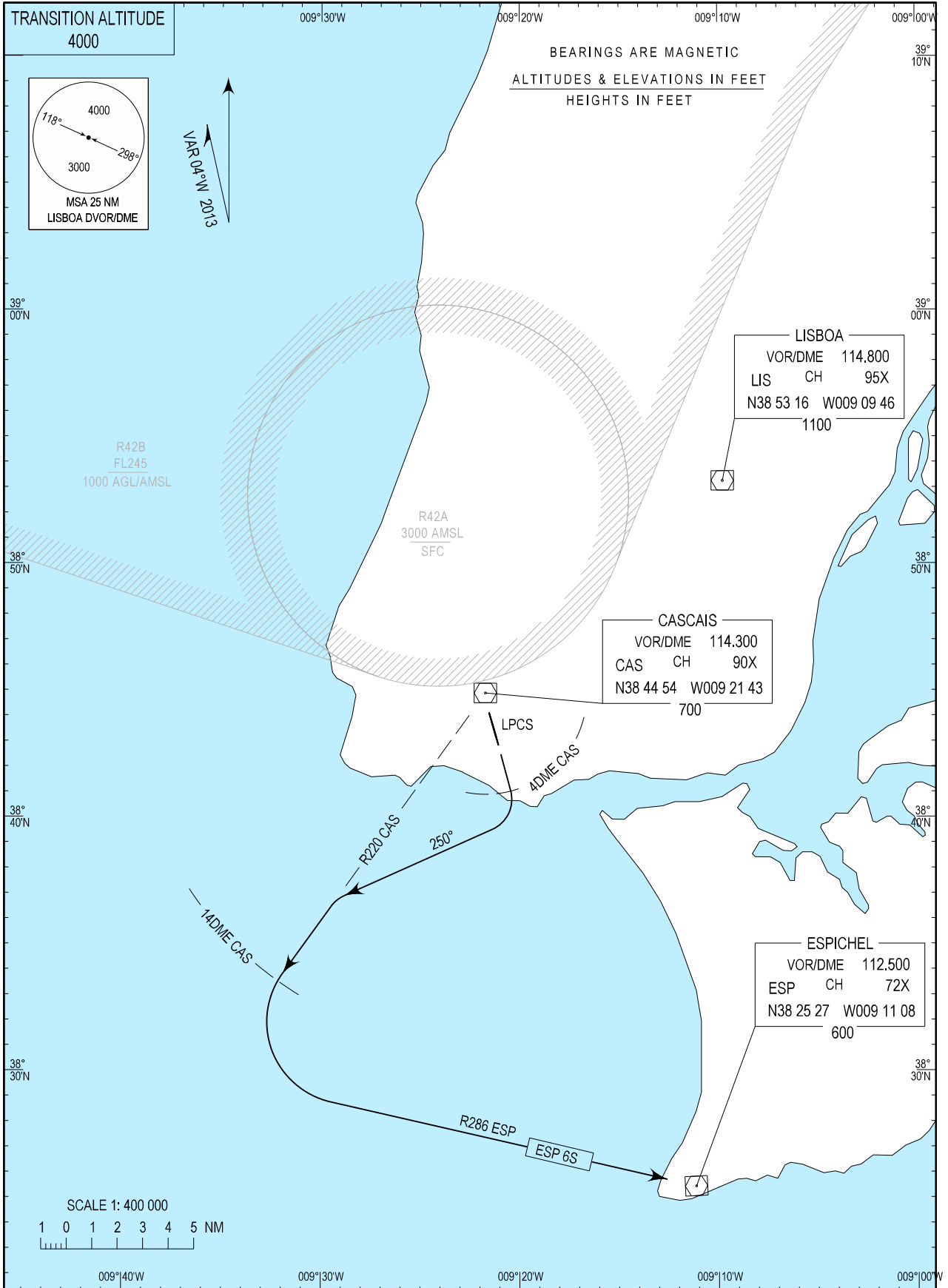


STANDARD DEPARTURE CHART -
INSTRUMENT (SID) - ICAO

CASCAIS TOWER 120.305
LISBOA APPROACH 119.105

CASCAIS / LPCS
RWY 17
ESP 6S



STANDARD INSTRUMENT DEPARTURE (SID) RWY 17

RUNWAY 17				
Designator	Route	After Take-off		Remarks
		Climb to ALT / FL	Contact	
ESP6S	Climb straight-ahead. At 04DME CAS or 800 FT ALT whichever is earlier, turn right heading 250 degrees maintaining 2000 FT until intercept RDL220 CAS DVOR/DME. At 14DME CAS DVOR/DME turn left to intercept RDL286 ESP DVOR/DME climbing to 3000 FT inbound ESP DVOR/DME.	3000 FT ALT	Lisboa Approach 119.105 MHZ when passing 2000 FT QNH	NIL