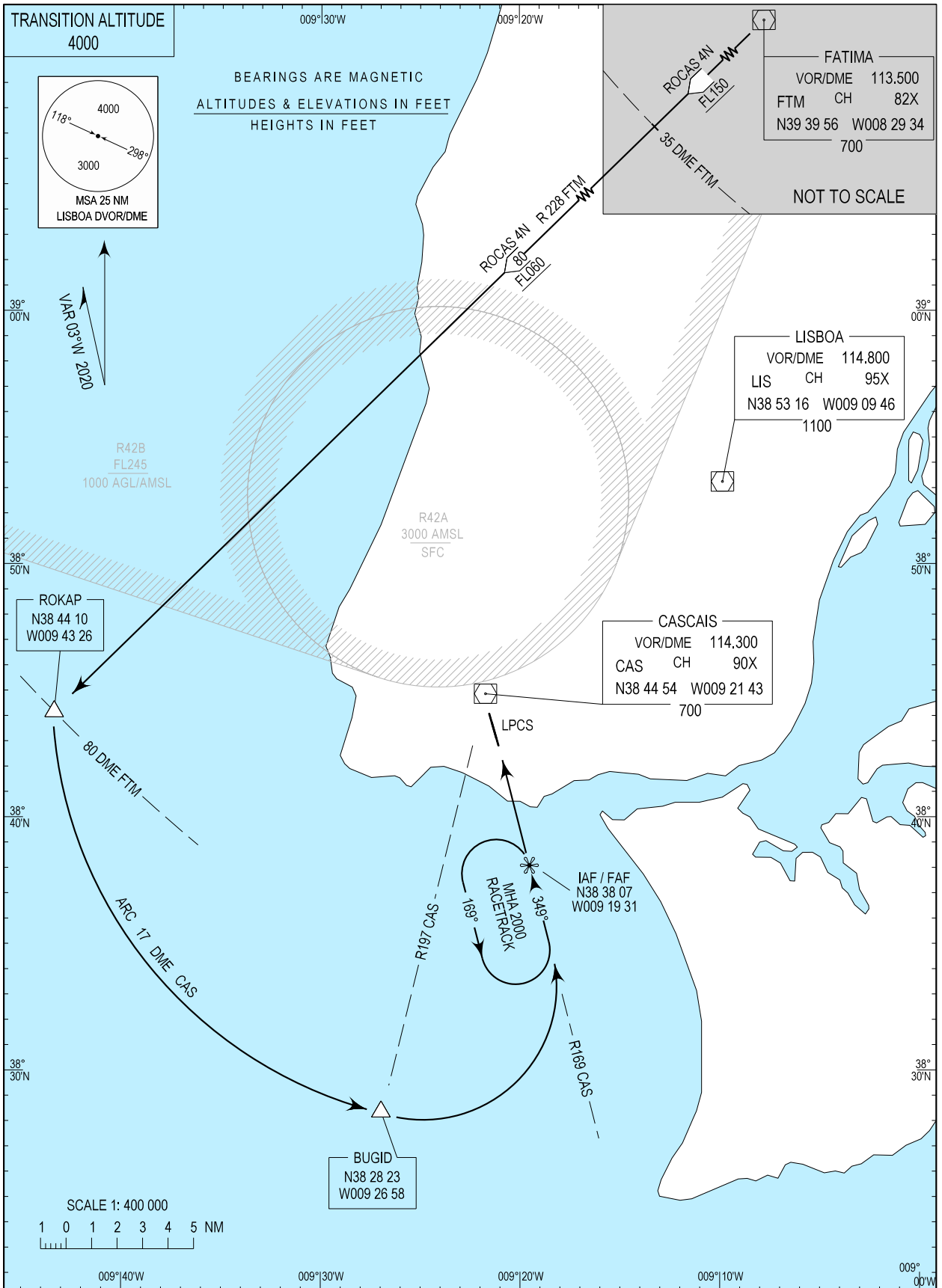


STANDARD ARRIVAL CHART -
INSTRUMENT (STAR) - ICAO

LISBOA APPROACH 119.105
CASCAIS TOWER 120.305

CASCAIS / LPCS
RWY 35
ROCAS 4N



MAG VAR updated.

CASCAIS STANDARD INSTRUMENT ARRIVAL (STAR) RWY 35

Designator	Route	After Take-off		Remarks
		Climb to ALT/FL	Contact	
ROCAS 4N	At FTM DVOR/DME intercept RDL228, not below FL150 until DME 35. At ROKAP (FTM DME 80), not below FL060 turn left and proceed on CAS DVOR/DME DME ARC 17 descending to 2000FT, to reach prior crossing RDL197 CAS DVOR/DME, (BUGID). At BUGID maintaining 2000FT, proceed to intercept RDL169 DME11 CAS DVOR/DME. Proceed to IAF/FAF.	-	-	-