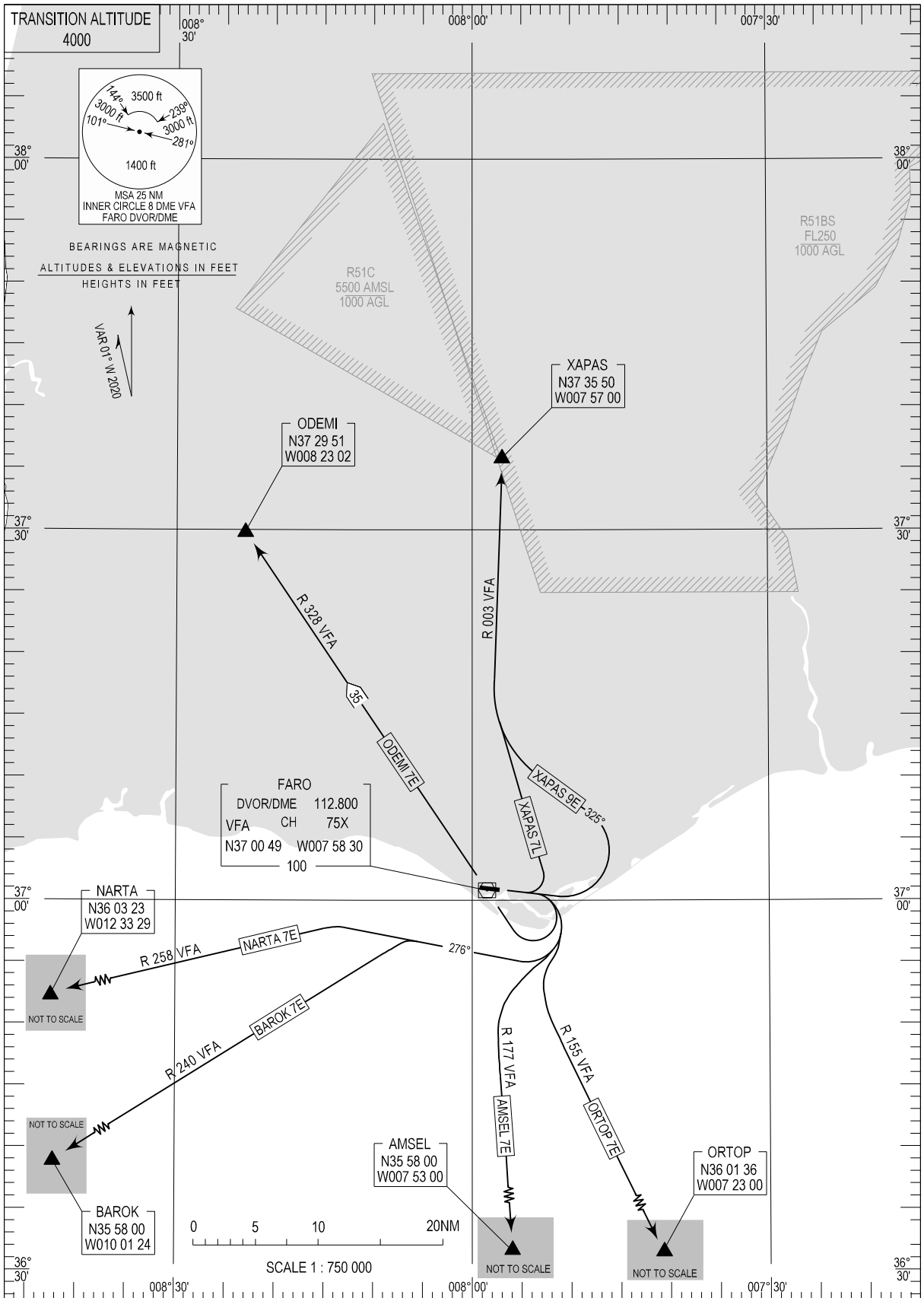


STANDARD DEPARTURE CHART -  
INSTRUMENT (SID) - ICAO

FARO INFORMATION 124.205  
FARO TOWER 120.755  
FARO APPROACH 119.405  
LISBOA CONTROL 125.550

FARO / LPFR  
RWY 10

AMSEL 7E, BAROK 7E, NARTA 7E  
ODEMI 7E, ORTOP 7E, XAPAS 9E, XAPAS 7L



MAG VAR updated.

STANDARD INSTRUMENT DEPARTURE (SID) RWY 10

Designator	Route	After Take-off		Remarks
		Climb to ALT/FL	Contact	
AMSEL7E	Turn right to intercept and proceed on RDL 177 VFA DVOR/DME to AMSEL	FL060	FARO APPROACH 119.405 MHZ	
BAROK7E	Turn right to track 276° to intercept and proceed on RDL 240 VFA DVOR/DME to BAROK			
NARTA7E	Turn right to track 276° to intercept and proceed on RDL 258 VFA DVOR/DME to NARTA			
ODEMI7E	Turn right to VFA DVOR/DME; proceed on RDL 328 VFA DVOR/DME to ODEMI			Cross VFA DVOR/DME at 2500FT QNH or above.
ORTOP7E	Turn right to intercept and proceed on RDL 155 VFA DVOR/DME to ORTOP			
XAPAS9E	Climb on Runway heading. When passing 3000FT QNH but not before 4NM VFA DVOR/DME, turn left track 325 to intercept and proceed on RDL003 VFA DVOR/DME to XAPAS.			Only to be assigned by ATC.
XAPAS7L	Turn left to intercept and proceed on RDL003 VFA DVOR/DME to XAPAS			Only to be assigned by ATC. For light Aircraft only.