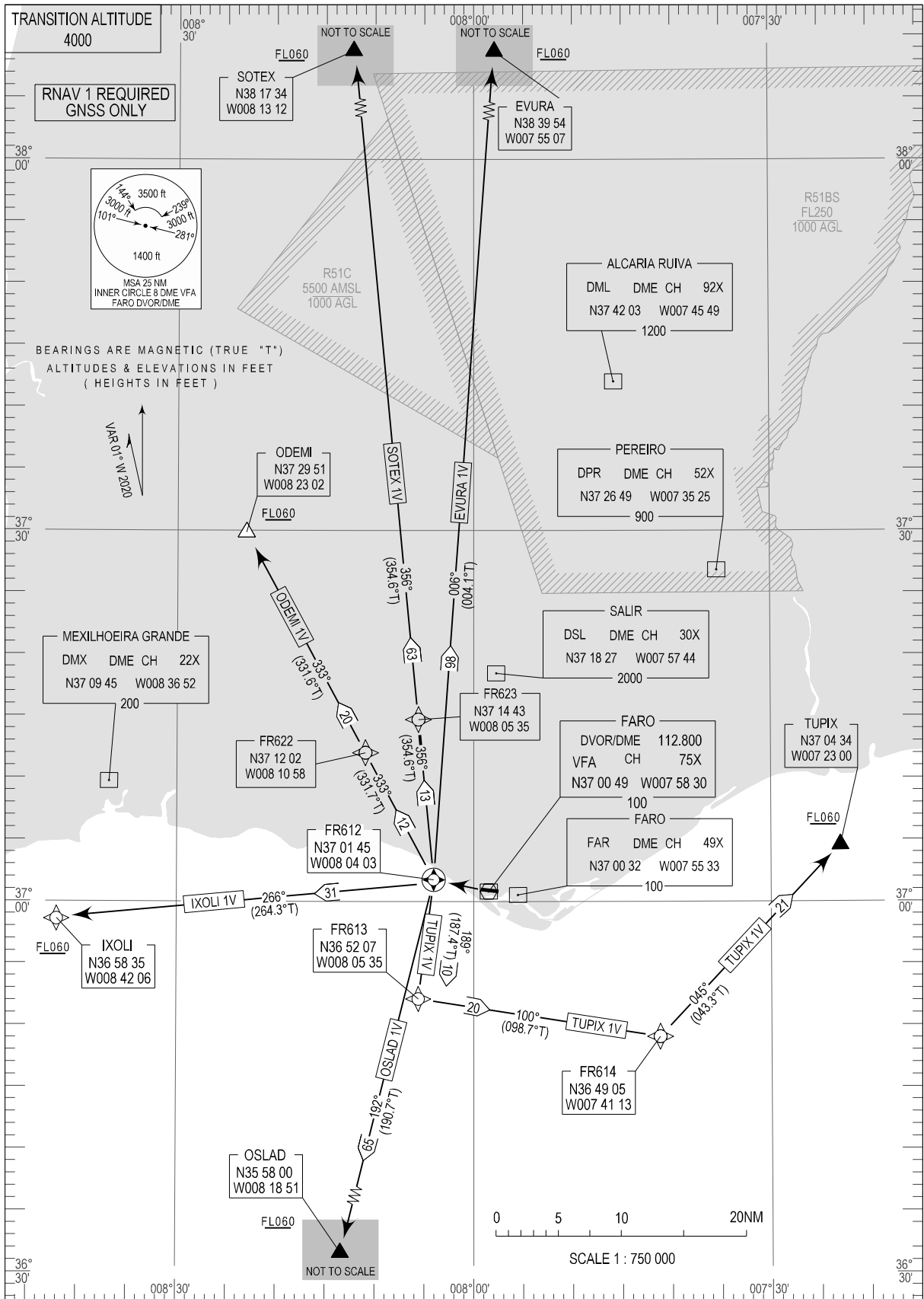


STANDARD DEPARTURE CHART -
INSTRUMENT (SID) - ICAO

FARO DEP INFORMATION 121.560
FARO TOWER 120.755
FARO APPROACH 119.405
LISBOA CONTROL 125.550

FARO / LPFR
RNAV RWY 28
EVURA 1V, IXOLI 1V, ODEMI 1V
OSLAD 1V, SOTEX 1V, TUPIX 1V



New ATIS FREQ.

STANDARD INSTRUMENT DEPARTURE (SID) RWY 28

RNAV 1 - GNSS ONLY

Procedure Coding Table

Path Terminator	Waypoint			Course/Track MAG (True)	Dist NM	Turn Direction	Constraints		Navigation Specification	Remarks
	Identifier	Flyover	Coordinates				Level	Speed		
Faro SID - ODEMI 1V										
CF	FR612	Yes	370145.28N 0080403.02W	282 (280.4)	-	-	-	-	RNAV 1	
TF	FR622	No	371201.91N 0081057.92W	333 (331.7)	11.66	Right	-	-		
TF	ODEMI	No	372951.02N 0082302.44W	333 (331.6)	20.23	-	+FL060	-		
Faro SID - OSLAD 1V										
CF	FR612	Yes	370145.28N 0080403.02W	282 (280.4)	-	-	-	-	RNAV 1	
TF	OSLAD	No	355800.00N 0081851.00W	192 (190.7)	64.78	Left	+FL060	-		
Faro SID - SOTEX 1V										
CF	FR612	Yes	370145.28N 0080403.02W	282 (280.4)	-	-	-	-	RNAV 1	
TF	FR623	No	371442.94N 0080535.48W	356 (354.6)	13.00	Right	-	-		
TF	SOTEX	No	381733.76N 0081311.58W	356 (354.6)	63.06	-	+FL060	-		
Faro SID - TUPIX 1V										
CF	FR612	Yes	370145.28N 0080403.02W	282 (280.4)	-	-	-	-	RNAV 1	
TF	FR613	No	365207.19N 0080535.26W	189 (187.4)	9.70	Left	-	-		
TF	FR614	No	364905.24N 0074112.75W	100 (098.7)	19.80	Left	-	-		
TF	TUPIX	No	370434.00N 0072300.00W	045 (043.3)	21.26	Left	+FL060	-		
Faro SID - EVURA 1V										
CF	FR612	Yes	370145.28N 0080403.02W	282 (280.4)	-	-	-	-	RNAV 1	
TF	EVURA	No	383953.90N 0075506.57W	006 (004.1)	98.29	Right	+FL060	-		
Faro SID - IXOLI 1V										
CF	FR612	Yes	370145.28N 0080403.02W	282 (280.4)	-	-	-	-	RNAV 1	
TF	IXOLI	No	365835.36N 0084206.13W	266 (264.3)	30.64	Left	+FL060	-		