

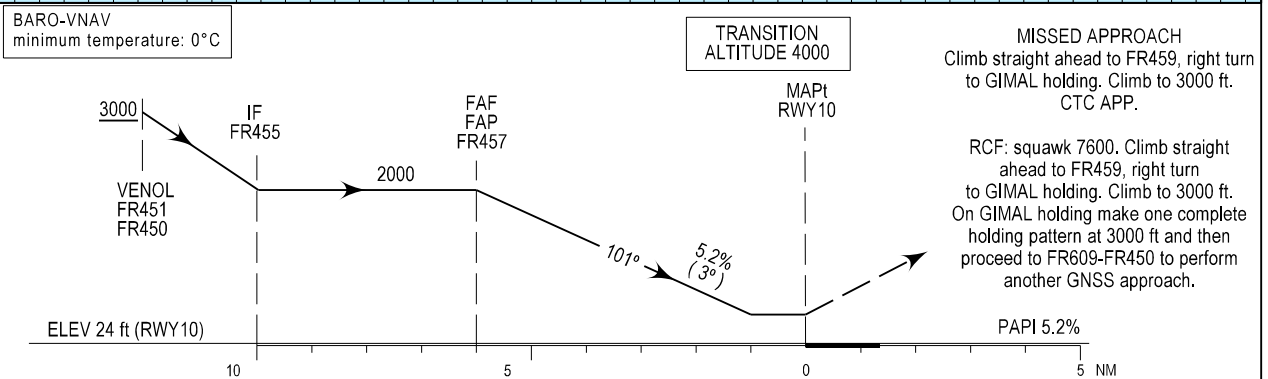
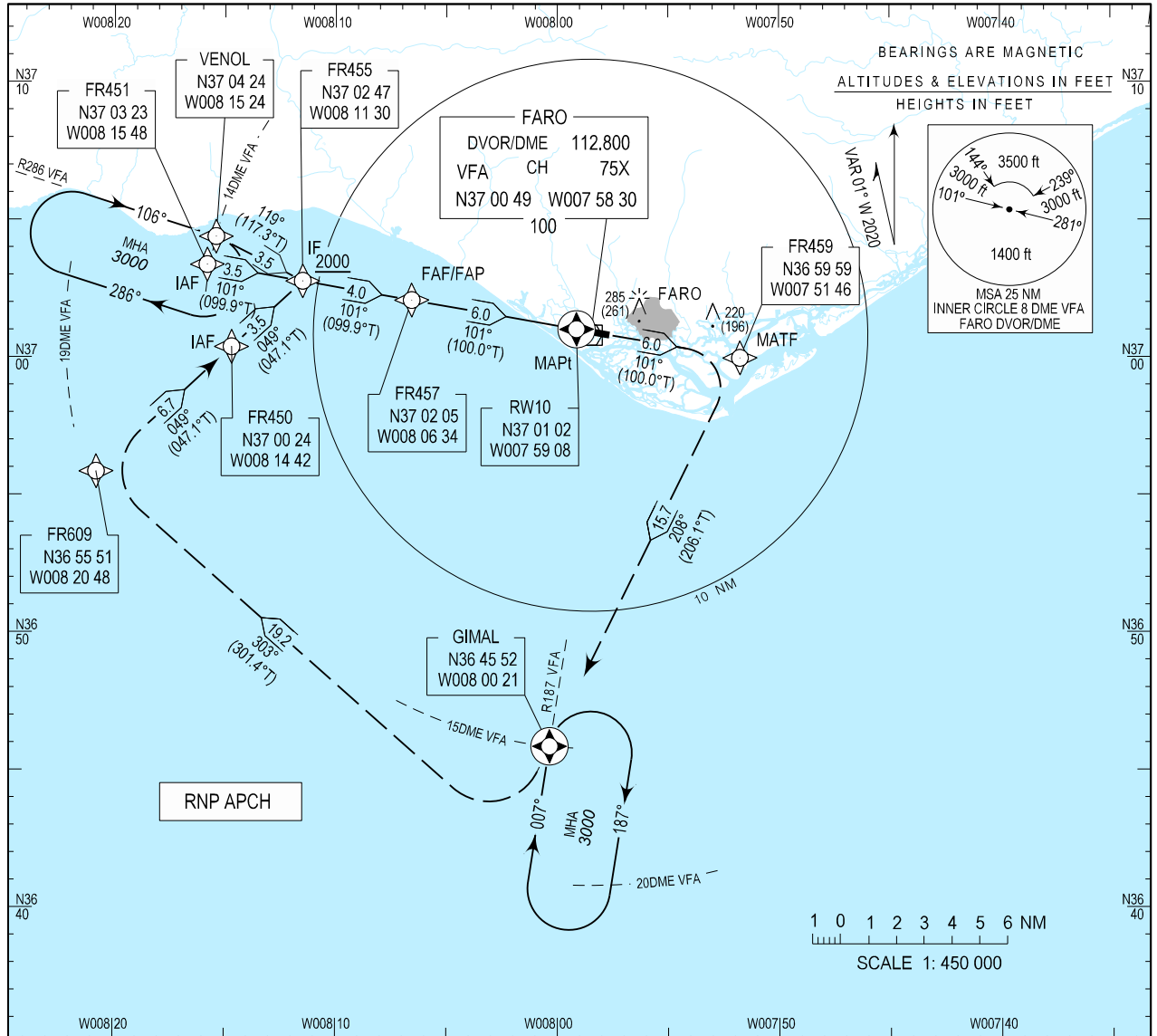
**INSTRUMENT
APPROACH
CHART - ICAO**

AD ELEV 24 ft
HEIGHTS RELATED
THR RWY 10 - ELEV 24 ft

FARO ARR INFORMATION 124.205
FARO APPROACH 119.405
FARO TOWER 120.755
FARO GROUND 118.580

EGNOS
CH 97973
E10A
RDH: 50

FARO / LPFR
RNP RWY10



CAT	LPV		LNAV/VNAV		LNAV		CIRCLING RWY10		DIST THR NM	Altitude (Height)	Rate of descent	kt	ft/min
	DA/H	OCH	DA/H	OCH	MDA/H	OCH	NORTH MDA/H	SOUTH MDA/H					
A	280 (256)	172	380 (356)	350	400 (376)	367	N/A	450 (426)	5	1680(1656)	160	850	
B	280 (256)	185	380 (356)	350	400 (376)	367	N/A	520 (496)	4	1360(1336)	140	740	
C	280 (256)	193	380 (356)	350	400 (376)	367	N/A	620 (596)	3	1045(1021)	120	640	
D	280 (256)	203	380 (356)	350	400 (376)	367	N/A	720 (696)	2	725(701)	100	530	
									1	410(386)	80	420	

ATIS ARR information.

Instrument Approach Procedure Coding Table
RNP RWY10

Path Terminator	Waypoint				Course/Track MAG (True)	Dist NM	Turn Direction	Constraints		Navigation Specification	Remarks
	Identifier	Type	Flyover	Coordinates				Level	Speed		
IF	VENOL	IAF	-	370423.82N 0081524.36W	-	-	-	+3000FT	-	RNP APCH	-
TF	FR455	IF	-	370246.67N 0081129.74W	119 (117.3)	3.52	-	+2000FT	-	RNP APCH	-
IF	FR451	IAF	-	370322.82N 0081548.17W	-	-	-	+3000FT	-	RNP APCH	-
TF	FR455	IF	-	370246.67N 0081129.74W	101 (099.9)	3.50	-	+2000FT	-	RNP APCH	-
IF	FR450	IAF	-	370023.52N 0081442.19W	-	-	-	+3000FT	-	RNP APCH	-
TF	FR455	IF	-	370246.67N 0081129.74W	049 (047.1)	3.50	-	+2000FT	-	RNP APCH	-
IF	FR455	IF	-	370246.67N 0081129.74W	-	-	-	+2000FT	-	RNP APCH	-
TF	FR457	FAP/FAF	-	370205.16N 0080634.48W	101 (099.9)	4.00	-	@2000FT	-	RNP APCH	-
TF	RW10	MAPT	Y	370102.00N 0075908.21W	101 (100.0)	6.05	-	+200FT	-	RNP APCH	-
TF	FR459	MATF	-	365958.99N 0075145.67W	101 (100.0)	6.00	-	-	-	RNP APCH	-
TF	GIMAL	-	Y	364552.01N 0080021.09W	208 (206.1)	15.69	R	@3000FT	-	RNP APCH	-
HM	GIMAL	HM	Y	364552.01N 0080021.09W	-	-	R	@3000FT	-	RNP APCH	-

RCF - PATH TERMINATOR

Path Terminator	Waypoint				Course/Track MAG (True)	Dist NM	Turn Direction	Constraints		Navigation Specification	Remarks
	Identifier	Type	Flyover	Coordinates				Level	Speed		
IF	GIMAL	HM	Y	364552.01N 0080021.09W	-	-	R	@3000FT	-	RNAV1	-
TF	FR609	-	-	365551.00N 0082048.00W	303 (301.4)	19.20	R	+3000FT	-	RNAV1	-
TF	FR450	IAF	-	370023.52N 0081442.19W	049 (047.1)	6.67	R	+3000FT	-	RNAV1	-

FAS data block

Operation Type	0
SBAS Provider	1
Airport Identifier	LPFR
Runway	10
Approach Performance Designator	0
Route Indicator	
Reference Path Data Selector	0
Reference Path Identifier	E10A
LTP/FTP Latitude	370102.0000N
LTP/FTP Longitude	0075908.2100W
LTP/FTP Ellipsoidal Height (metres)	59.5M
FPAP Latitude	370048.4215N
FPAP Longitude	0075732.5495W
Threshold Crossing Height	15.00M
Glidepath Angle (degrees)	3.00
Course Width (metres)	105.00M
Length Offset (metres)	0M
HAL (metres)	40.0M
VAL (metres)	50.0M

Output data

Data block	0 1 30 08 60 48 0A 0 0 20 00 A0 8C 0C 80 F0 47 AB 06 3F 49 35 39 68 CA FF A9 D7 40 D7 9A 81 34 80 34 64 00 C8 FA
CRC Value	AD CF 96 55