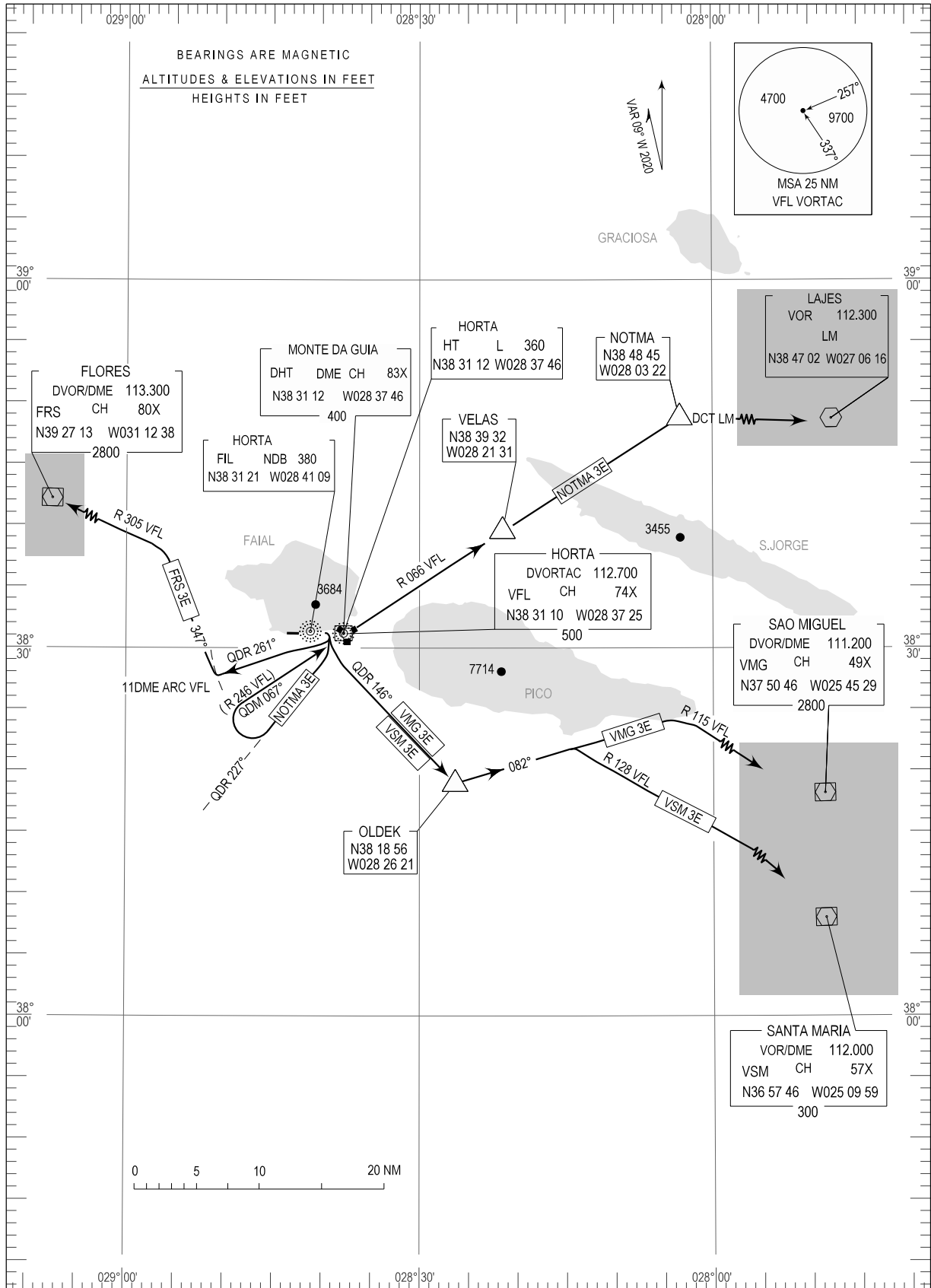


STANDARD DEPARTURE CHART - INSTRUMENT (SID) - ICAO

TRANSITION ALTITUDE 5000
TWR 118.000
APP 120.600

HORTA (LPHR)

RWY 10
FRS 3E, NOTMA3E
VMG 3E, VSM3E



STANDARD INSTRUMENT DEPARTURE (SID) RWY 10

| RUNWAY 10 | | |
|------------|---|---|
| Designator | Route | Remarks |
| FRS3E | Turn right to intercept HT Locator QDR 261; at VFL DME arc 11, turn right to track 347 to intercept VFL RDL305 to FRS at or above FL100 (FIL QDR 305 below FL100) | - |
| VSM3E | Turn right to intercept FIL QDR 146 to OLDEK; at OLDEK turn left direct to track 082 to intercept VFL RDL 128 to VSM at or above FL100 (FIL QDR 127 below FL100) | Note - Do not overshoot QDR 146 (or VFL RDL154) to the East, before Point OLDEK. Cross OLDEK at or above 5000FT QNH. |
| VMG3E | Turn right to intercept FIL NDB QDR 146 to OLDEK; at OLDEK turn left to track 082 to intercept VFL RDL 115 to VMG at or above FL100 (FIL QDR 115 below FL100) | Note - Do not overshoot QDR 146 (or VFL RDL154) to the East, before point OLDEK. Cross OLDEK at or above 5000FT. |
| NOTMA3E | Turn right to intercept HT Locator QDR 227. When passing 2500FT QNH turn right to intercept QDM 067 to HT Locator (RDL246 to VFL VORTAC at or above 5000FT). Continue on VFL RDL066 to NOTMA; from NOTMA proceed direct to LM. | Note - When inbound to HT/VFL cross at or above climbing : VFL DME Arc 5NM - 4000FT QNH. HT/VFL - 5000FT QNH |