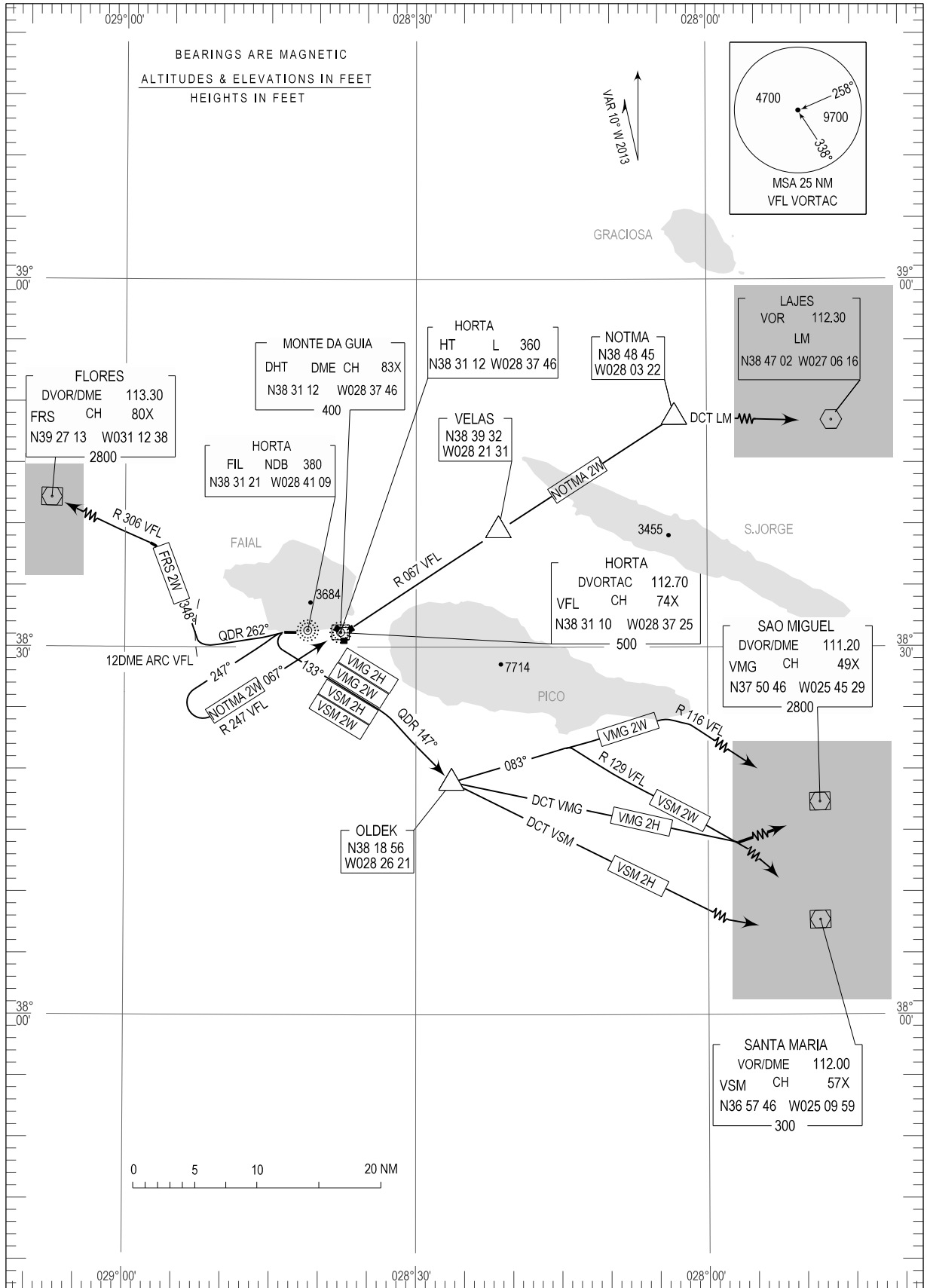


STANDARD DEPARTURE CHART -  
INSTRUMENT (SID) - ICAO

TRANSITION ALTITUDE 5000  
TWR 118.000  
APP 120.600

HORTA (LPHR)  
RWY 28  
FRS 2W, VSM 2W, VSM 2H  
VMG 2W, VMG 2H, NOTMA 2W



New DME DHT.

**STANDARD INSTRUMENT DEPARTURE (SID) RWY 28**

RUNWAY 28		
Designator	Route	Remarks
FRS2W	Intercept FIL NDB QDR 262. At VFL DME arc 12, turn right to track 348 to intercept VFL RDL 306 to FRS at or above FL100. (FIL QDR 306 below FL100)	
VSM2W	Turn left and proceed on track 133 to intercept FIL NDB QDR 147 to OLDEK. At OLDEK turn left track 083 to intercept VFL RDL 129 to VSM at or above FL100 (FIL QDR 129 below FL100)	Note - Do not overshoot QDR 147 (or VFL RDL 155) to the East, before point OLDEK. Cross OLDEK at or above 5000FT QNH.
VSM2H RNAV SID	Turn left and proceed on track 133 to intercept FIL NDB QDR 147 to OLDEK. At OLDEK turn left direct to VSM.	Note - Do not overshoot QDR 147 (or VFL RDL 155) to the East, before point OLDEK. Cross OLDEK at or above 5000FT QNH.
VMG2W	Turn left and proceed on track 133 to intercept FIL NDB QDR 147 to OLDEK. At OLDEK turn left to track 083 to intercept VFL RDL 116 to VMG at or above FL100 ( FIL QDR 116 below FL100).	Note - Do not overshoot QDR 147 (or VFL RDL155) to the East, before point OLDEK. Cross OLDEK at or above 5000FT QNH.
VMG2H RNAV SID	Turn left and proceed on track 133 to intercept FIL NDB QDR 147 to OLDEK. At OLDEK turn left direct to VMG	Note - Do not overshoot QDR 147 (or VFL RDL155) to the East, before point OLDEK. Cross OLDEK at or above 5000FT QNH.
NOTMA2W	Turn left to intercept MAG track 247. When passing 2500FT QNH turn left to intercept QDM 067 to HT Locator ( RDL 247 to VFL VORTAC). Continue on VFL RDL 067 to NOTMA; from NOTMA proceed direct to LM.	Note - When inbound to HT/VFL cross at or above, climbing: VFL DME arc 5NM - 4000FT QNH. HT/VFL - 5000FT QNH