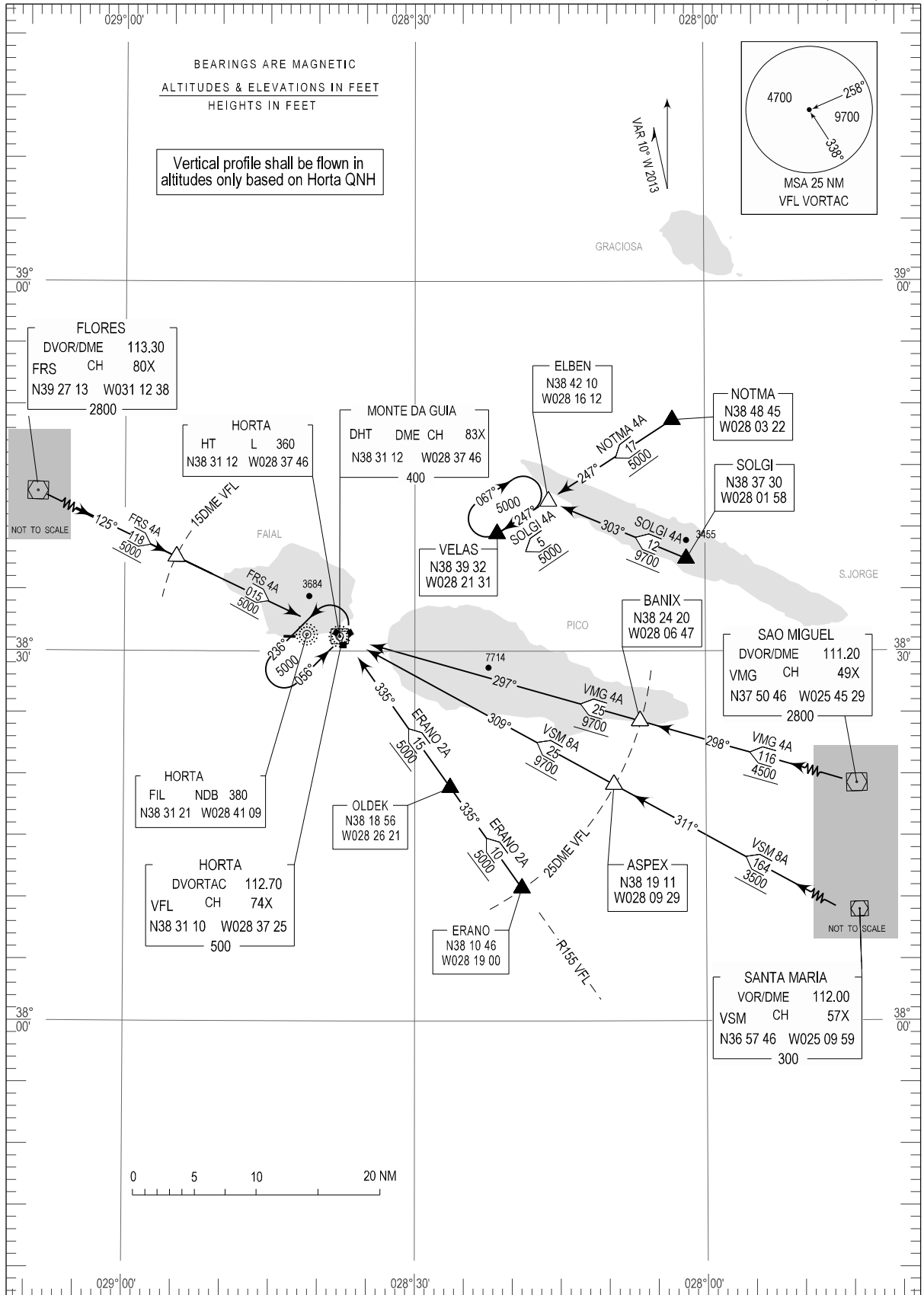


STANDARD ARRIVAL CHART -  
INSTRUMENT (STAR) - ICAO

TRANSITION ALTITUDE 5000	TWR 118.000 APP 120.600
-----------------------------	----------------------------

HORTA (LPHR)  
RWY 10 / 28

ERANO 2A, FRS 4A, NOTMA 4A  
SOLGI 4A, VMG 4A, VSM 8A



New DME DHT.

STANDARD INSTRUMENT ARRIVAL (STAR) RWY 10/28

RUNWAY 10 - 28					
Designator	Identification Significant Points	MAG. Track	DIST NM	Minimum safe ALT.	Remarks
ERANO2A	▲ ERANO	335	010	5000	Note - Clearance Limit: Holding VFL
	△ OLDEK		015		
	▲ VFL				
FRS4A	▲ FRS	125	133	5000	Note - Clearance Limit: Holding VFL
	▲ VFL				
FRS4B	WITHDRAWN				
NOTMA4A	▲ NOTMA	247	017	5000	Note - Clearance limit: Holding VFL
	▲ VELAS (RDL 067 DME 15 VFL)				
SOLG4A	▲ SOLGI	303	012	9700	Note - Clearance limit: Holding VFL.
	△ ELBEN (RDL 067 DME 20 VFL)		005		
	▲ VELAS				
VMG4A	▲ VMG	298	116	4500	Note - Clearance Limit : Holding VFL Descent to 5000FT QNH only when established on Holding Pattern
	△ BANIX		025		
	▲ VFL	297	9700		
VSM8A	▲ VSM	311	164	3500	Note - Clearance limit : Holding VFL Descent to 5000FT QNH only when established on Holding Pattern
	△ ASPEX		025		
	▲ VFL	309	9700		