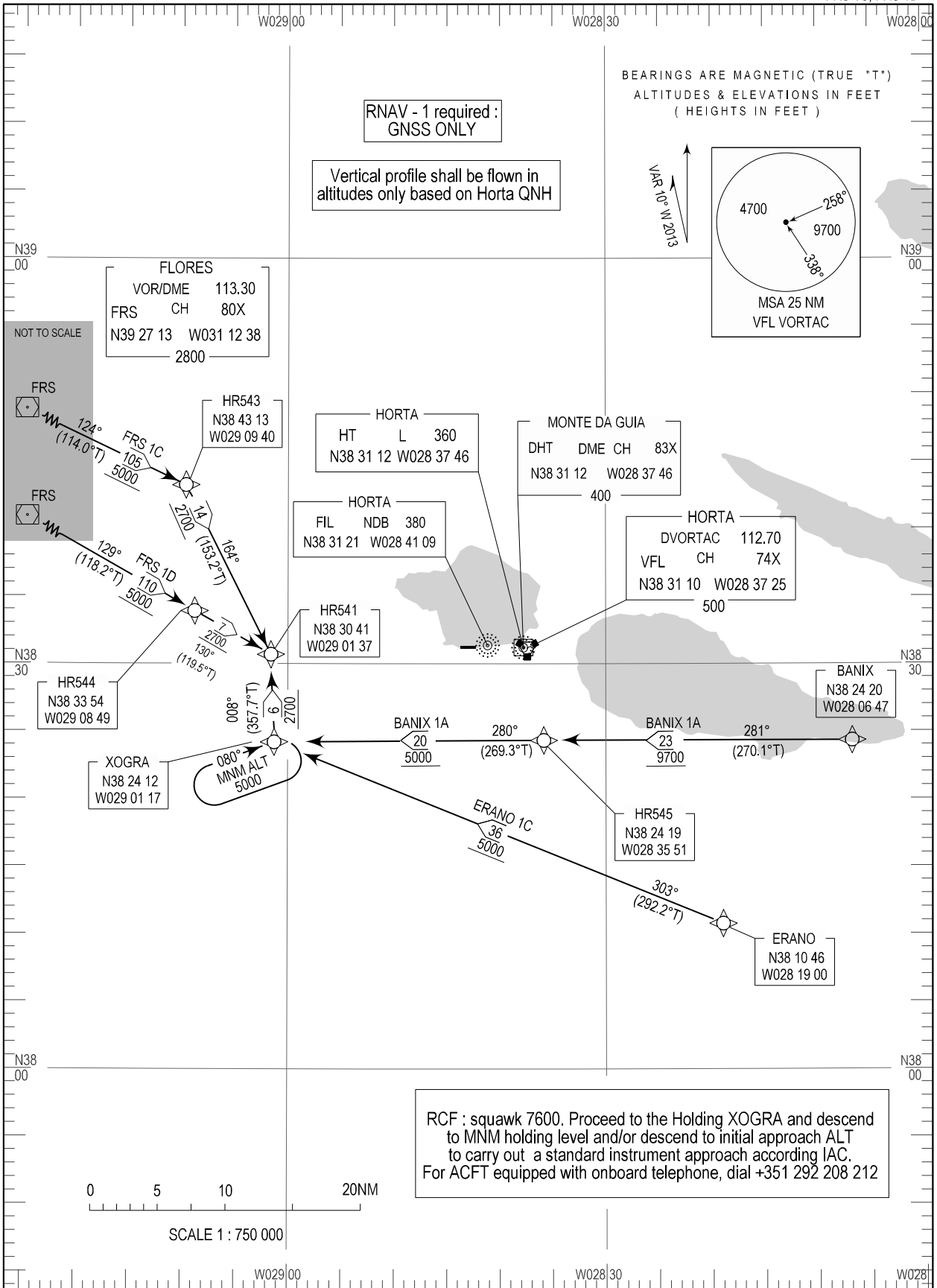


STANDARD ARRIVAL CHART -  
INSTRUMENT (STAR) - ICAO

TRANSITION ALTITUDE  
5000

TWR 118.000  
APP 120.600  
ACC 132.150

HORTA (LPHR)  
RNAV RWY 10  
BANIX 1A, ERANO 1C  
FRS 1C, FRS 1D



New DME DHT.

Procedure Coding Table  
LPHR STAR RNAV RWY10

Horta STAR RNAV 1 BANIX 1A										
Path Terminator	Waypoint			Course/Track MAG (True)	Dist NM	Turn Direction	Constraints		Navigation Specificatin	Remarks
	Identifier	Flyover	Coordinates				Level	Speed		
IF	BANIX	-	382419.97N 0280646.89W	-	-	-	+9700 ft	-	RNAV 1	Clearance limit: HR541
TF	HR545	-	382419.12N 0283550.83W	281 (270.1)	22.8	-	+9700 ft	-	RNAV 1	
TF	XOGRA	-	382412.46N 0290117.39W	280 (269.3)	20.0	-	+5000 ft	-	RNAV 1	
TF	HR541	-	383041.28N 0290136.84W	008 (357.7)	6.5	R	+2700 ft	-	RNAV 1	

Horta STAR RNAV 1 ERANO 1C										
Path Terminator	Waypoint			Course/Track MAG (True)	Dist NM	Turn Direction	Constraints		Navigation Specificatin	Remarks
	Identifier	Flyover	Coordinates				Level	Speed		
IF	ERANO	-	381046.10N 0281859.92W	-	-	-	+5000 ft	-	RNAV 1	Clearance limit: HR541
TF	XOGRA	-	382412.46N 0290117.39W	303 (292.2)	35.9	-	+5000 ft	-	RNAV 1	
TF	HR541	-	383041.28N 0290136.84W	008 (357.7)	6.5	R	+2700 ft	-	RNAV 1	

Horta STAR RNAV 1 FRS 1C										
Path Terminator	Waypoint			Course/Track MAG (True)	Dist NM	Turn Direction	Constraints		Navigation Specificatin	Remarks
	Identifier	Flyover	Coordinates				Level	Speed		
IF	FRS	-	392712.92N 0311237.50W	-	-	-	+5000 ft	-	RNAV 1	Clearance limit: HR541
TF	HR543	-	384313.16N 0290940.05W	124 (114.0)	105.3	-	+5000 ft	-	RNAV 1	
TF	HR541	-	383041.28N 0290136.84W	164 (153.2)	14.0	R	+2700 ft	-	RNAV 1	

Horta STAR RNAV 1 FRS 1D										
Path Terminator	Waypoint			Course/Track MAG (True)	Dist NM	Turn Direction	Constraints		Navigation Specificatin	Remarks
	Identifier	Flyover	Coordinates				Level	Speed		
IF	FRS	-	392712.92N 0311237.50W	-	-	-	+5000 ft	-	RNAV 1	Clearance limit: HR541
TF	HR544	-	383354.00N 0290849.12W	129 (118.2)	110.2	-	+5000 ft	-	RNAV 1	
TF	HR541	-	383041.28N 0290136.84W	130 (119.5)	6.5	-	+2700 ft	-	RNAV 1	