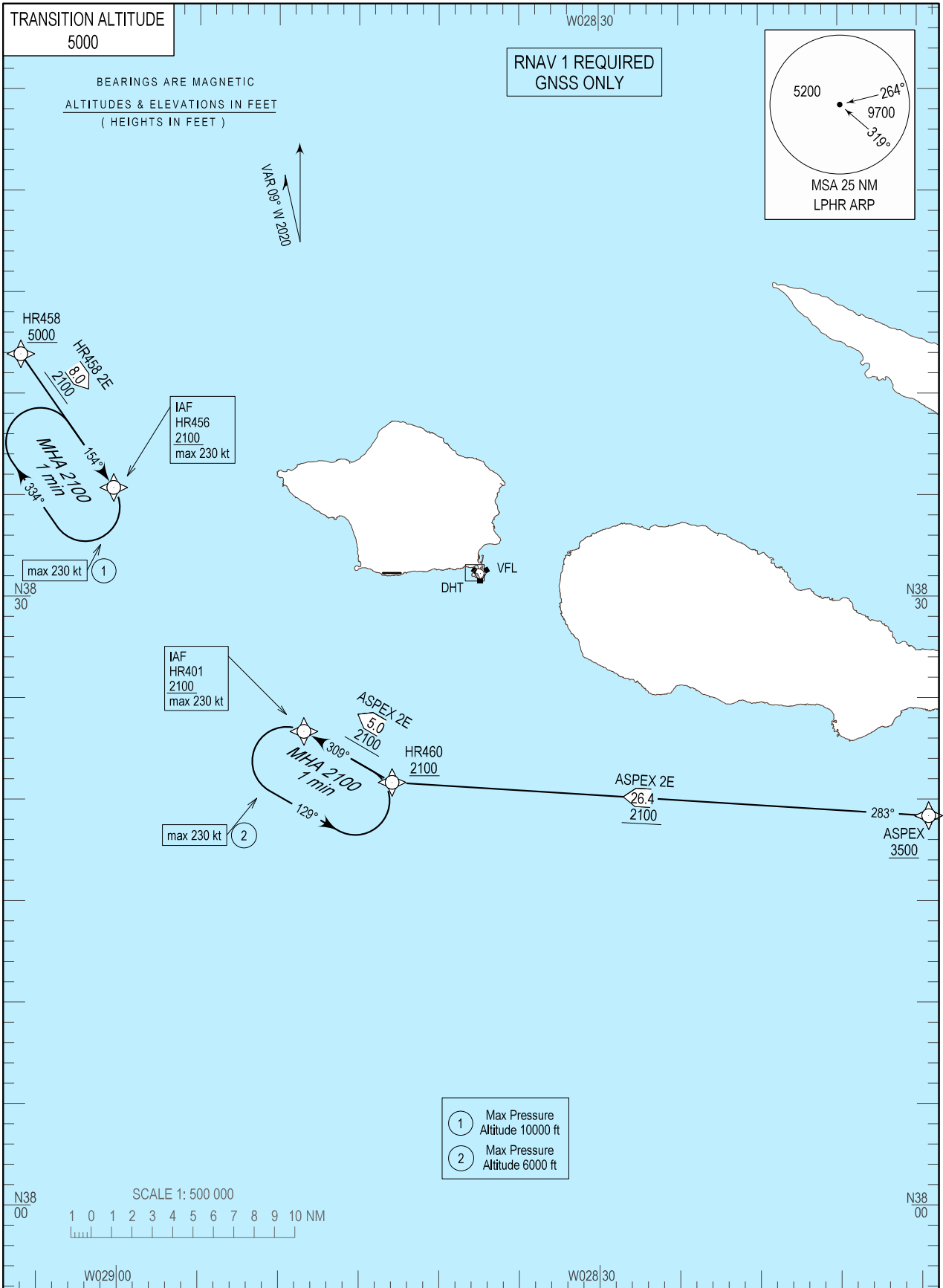


STANDARD ARRIVAL CHART -
INSTRUMENT (STAR) - ICAO

SANTA MARIA RADAR 132.150
HORTA APPROACH 120.600
HORTA TOWER 118.000

HORTA (LPHR)
RNAV Rwy10
HR458 2E
ASPEX 2E



MAGVAR updated.

STAR Procedure Coding Table

Horta STAR RNAV1 HR458 2E

Path Terminator	Waypoint			Course/Track MAG (True)	Dist NM	Turn Direction	Constraints		Navigation Specificatin
	Identifier	Flyover	Coordinates				Level	Speed	
IF	HR458	-	384156.09N 0290612.17W	-	-	-	+5000FT	250 KT	RNAV 1
TF	HR456	-	383522.36N 0290021.02W	154 (145.0)	8.0	-	+2100FT	230 KT	RNAV 1

Horta STAR RNAV1 ASPEX 2E

Path Terminator	Waypoint			Course/Track MAG (True)	Dist NM	Turn Direction	Constraints		Navigation Specificatin
	Identifier	Flyover	Coordinates				Level	Speed	
IF	ASPEX	-	381910.64N 0280928.77W	-	-	-	+3500FT	250 KT	RNAV 1
TF	HR460	-	382052.46N 0284255.22W	283 (273.9)	26.4	-	+2100FT	230 KT	RNAV 1
TF	HR401	-	382322.72N 0284825.50W	309 (300.1)	5.0	Right	+2100FT	230 KT	RNAV 1

Horta RNAV Holdings

HLDG ID	INBD TRACK		Turn direction	max IAS (kt)	MNM HLDG ALT FL/ft (MSL)	TIME (MIN) or DIST OUBD	Controlling Unit
	MAG	(TRUE)					
HR456	154 (145.0)		R	230	2100FT	1 min	Horta TWR
HR401	309 (300.0)		L	230	2100FT	1 min	Horta TWR