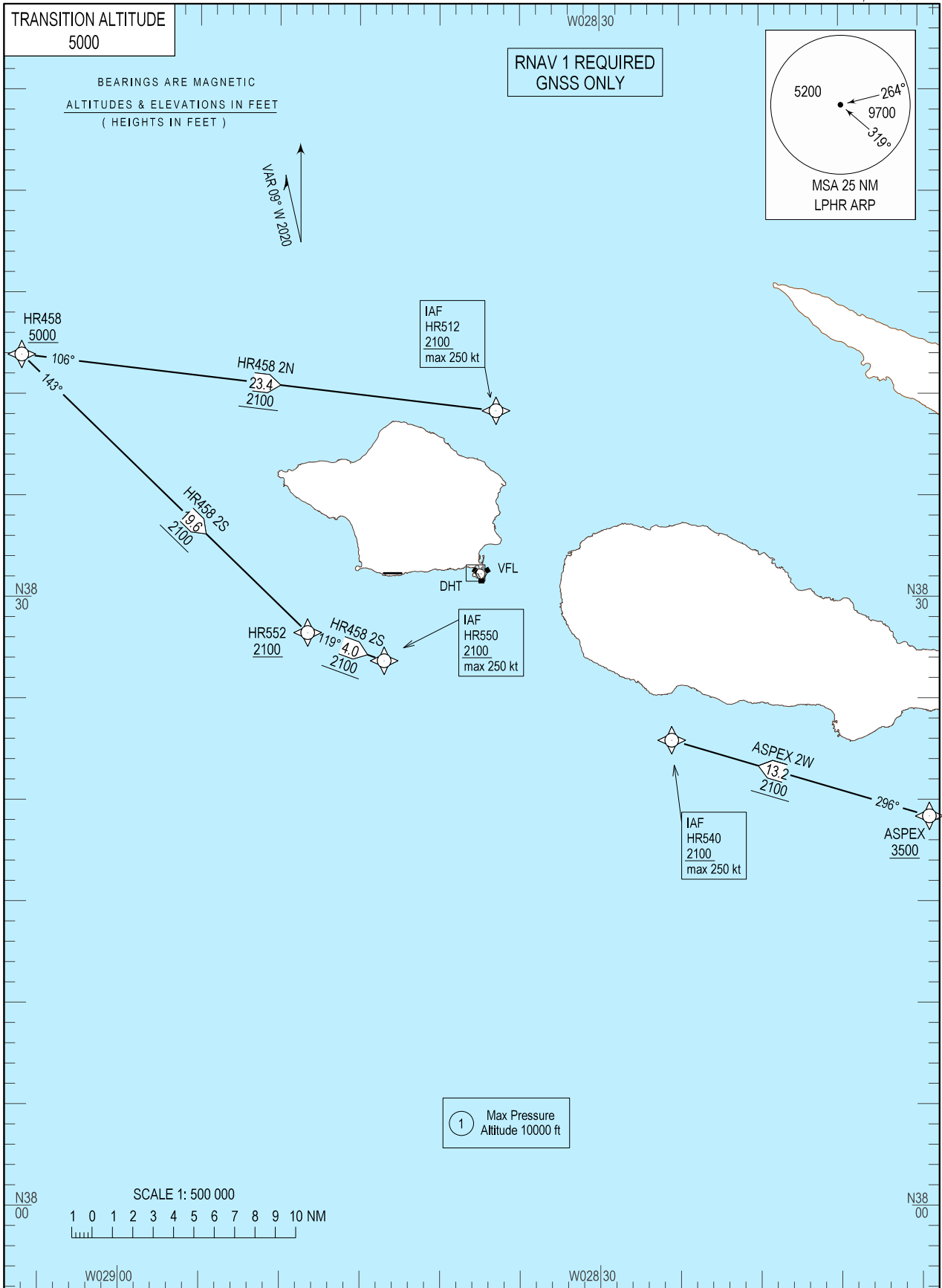


STANDARD ARRIVAL CHART -
INSTRUMENT (STAR) - ICAO

SANTA MARIA RADAR 132.150
HORTA APPROACH 120.600
HORTA TOWER 118.000

HORTA (LPHR)
RNAV RWY28
ASPEX 2W
HR458 2N, HR458 2S



MAGVAR updated.

STAR Procedure Coding Table									
Horta STAR RNAV1 HR458 2N									
Path Terminator	Waypoint			Course/Track MAG (True)	Dist NM	Turn Direction	Constraints		Navigation Specificatin
	Identifier	Flyover	Coordinates				Level	Speed	
IF	HR458	-	384156.09N 0290612.17W	-	-	-	+5000FT	250 KT	RNAV 1
TF	HR512	-	383911.65N 0283629.29W	106 (096.6)	23.4	-	+2100FT	250 KT	RNAV 1

Horta STAR RNAV1 HR458 2S									
Path Terminator	Waypoint			Course/Track MAG (True)	Dist NM	Turn Direction	Constraints		Navigation Specificatin
	Identifier	Flyover	Coordinates				Level	Speed	
IF	HR458	-	384156.09N 0290612.17W	-	-	-	+5000FT	250 KT	RNAV 1
TF	HR552	-	382815.42N 0284815.32W	143 (134.1)	19.6	-	+2100FT	250 KT	RNAV 1
TF	HR550	-	382652.40N 0284328.60W	119 (110.2)	4.0	Left	+2100FT	250 KT	RNAV 1

Horta STAR RNAV1 ASPEX 2W									
Path Terminator	Waypoint			Course/Track MAG (True)	Dist NM	Turn Direction	Constraints		Navigation Specificatin
	Identifier	Flyover	Coordinates				Level	Speed	
IF	ASPEX	-	381910.64N 0280928.77W	-	-	-	+3500FT	250 KT	RNAV 1
TF	HR540	-	382256.99N 0282531.75W	296 (286.7)	13.2	-	+2100FT	250 KT	RNAV 1