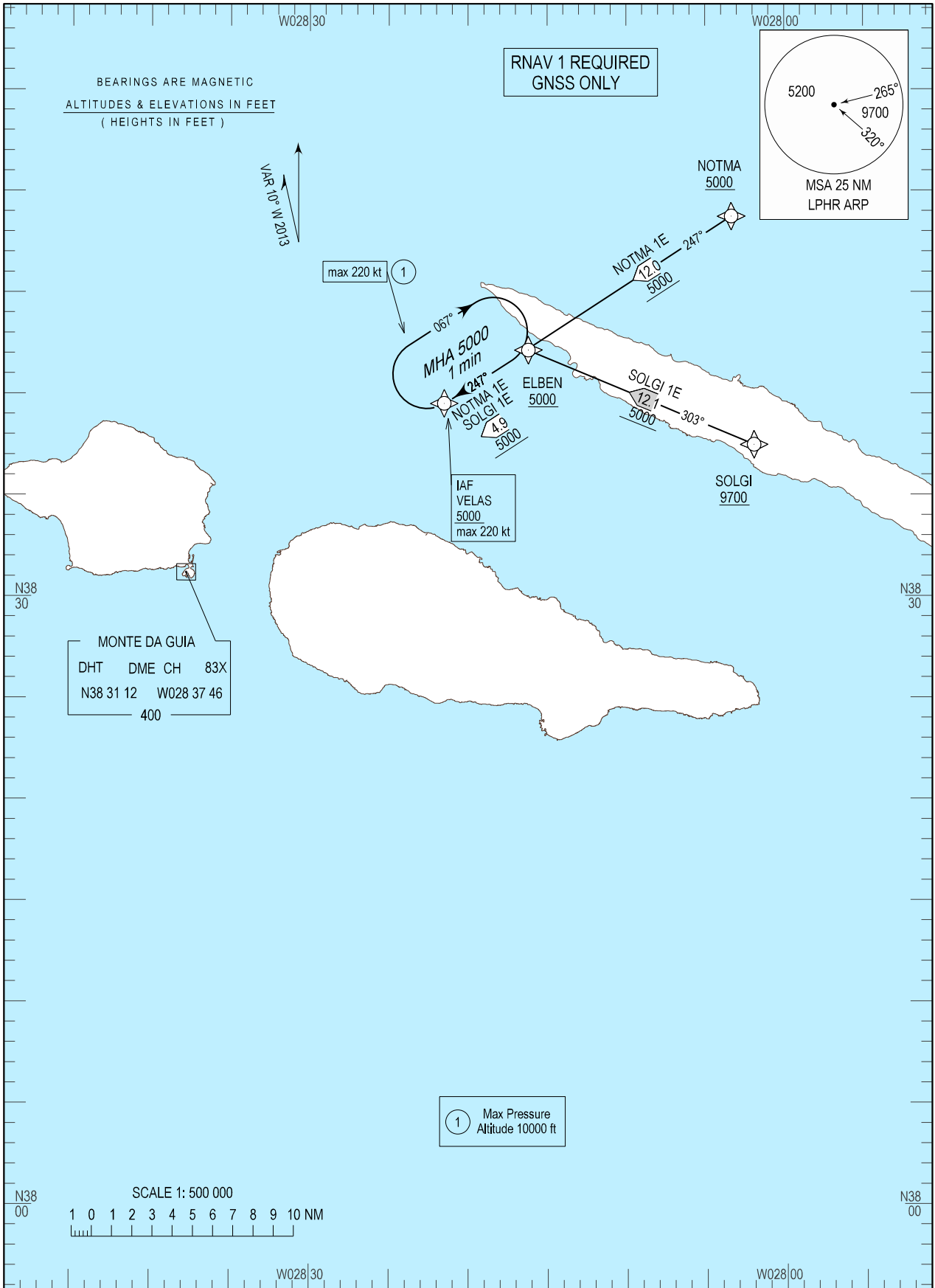


STANDARD ARRIVAL CHART -
INSTRUMENT (STAR) - ICAO

TRANSITION ALTITUDE
5000

TWR 118.000
APP 120.600
ACC 132.150

HORTA (LPHR)
RNAV RWY 10/28
NOTMA 1E, SOLGI 1E



STAR Procedure Coding Table									
Horta STAR RNAV1 NOTMA 1E									
Path Terminator	Waypoint			Course/Track MAG (True)	Dist NM	Turn Direction	Constraints		Navigation Specificatin
	Identifier	Flyover	Coordinates				Level	Speed	
IF	NOTMA	-	384845.25N 0280322.13W	-	-	-	+5000ft	250 KT	RNAV 1
TF	ELBEN	-	384209.66N 0281611.92W	247 (236.8)	12.0	-	+5000ft	250 KT	RNAV 1
TF	VELAS	-	383931.89N 0282130.62W	248 (237.8)	4.9	-	+5000ft	220 KT	RNAV 1

Horta STAR RNAV1 SOLGI 1E									
Path Terminator	Waypoint			Course/Track MAG (True)	Dist NM	Turn Direction	Constraints		Navigation Specificatin
	Identifier	Flyover	Coordinates				Level	Speed	
IF	SOLGI	-	383729.64N 0280157.62W	-	-	-	+9700ft	250 KT	RNAV 1
TF	ELBEN	-	384209.66N 0281611.92W	303 (292.8)	12.1	-	+5000ft	250 KT	RNAV 1
TF	VELAS	-	383931.89N 0282130.62W	248 (237.8)	4.9	Left	+5000ft	220 KT	RNAV 1

Horta RNAV Holdings							
HLDG ID	INBD TRACK		Turn direction	max IAS (kt)	MNM HLDG ALT FL/ft (MSL)	TIME (MIN) or DIST OUBD	Controlling Unit
	MAG	(TRUE)					
VELAS	247	(236.1)	R	220	5000 ft	1 min	Horta TWR