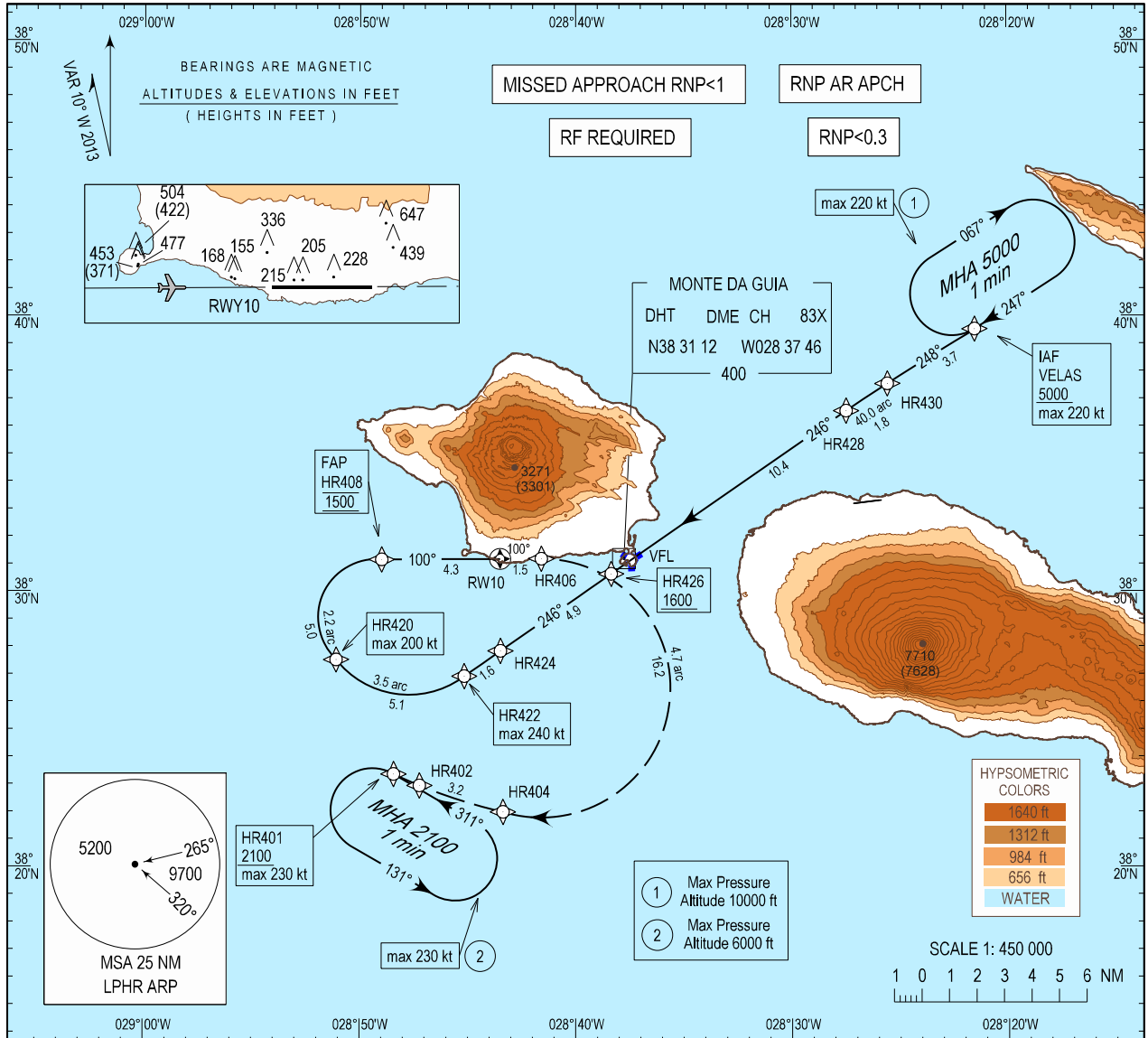


INSTRUMENT  
APPROACH  
CHART - ICAO

AD ELEV 118 ft  
HEIGHTS RELATED  
THR RWY 10 - ELEV 82 ft

ACC 132.150  
APP 120.600  
TWR 118.000

HORTA / LPHR  
RNP Z RWY10 (AR)



**MISSED APPROACH**  
Climb to 2100 ft via RNP AR missed approach track HR406-HR404-HR402 to HR401.  
At HR401, hold or start a new approach via HR401 or follow ATC instructions.  
**Note:** RNP 0.3 required from HR406 until HR401

RCF: Squawk 7600.  
Proceed as above.  
On HR401 make one complete holding pattern at 2100 ft and then proceed to perform RNP X RWY10 approach procedure.

**BARO-VNAV MINIMUM TEMPERATURE: +5.0°C**

TA: 5000

HR420 1500

FAP HR408 1500

700 (618)

3.0° - 5.2%

100° (089.7°T)

100°

RDH:50

	CAT A		CAT B		CAT C	
	DA(H)	OCH	DA(H)	OCH	DA(H)	OCH
③ RNP 0.3	640(558)	552	650(568)	564	660(578)	572
④ RNP 0.2	640(558)	552	650(568)	564	660(578)	572
⑤ RNP 0.1	590(508)	501	600(518)	513	610(528)	521

③ RNP 0.3 is required until HR406  
④ RNP 0.2 is required until HR406  
⑤ RNP 0.1 is required until HR406

New DME DHT. New text boxes. New chart IDENT.

Instrument Approach Procedure Coding Table										
Horta RNP Z RWY 10 (AR)										
Path Terminator	Waypoint				Course/Track MAG (True)	Dist NM	Turn Direction	ARC Centre Waypoint		ARC Radius NM
	Identifier	Type	Flyover	Coordinates				Identifier	Coordinates	
IF	VELAS	IAF	-	383931.89N 0282130.62W	-	-	-	-	-	-
TF	HR430	-	-	383733.10N 0282533.43W	248 (238.0)	3.7	-	-	-	-
RF	HR428	-	-	383633.89N 0282728.16W	-	1.8	L	HRC19	380333.46N 0275841.29W	40.0
TF	HR426	-	-	383038.83N 0283821.54W	246 (235.4)	10.4	-	-	-	-
TF	HR424	-	-	382751.07N 0284328.97W	246 (235.3)	4.9	-	-	-	-
TF	HR422	-	-	382656.14N 0284509.47W	246 (235.2)	1.6	-	-	-	-
RF	HR420	IF	-	382731.97N 0285105.32W	-	5.1	R	HRC16	382948.70N 0284742.19W	3.5
RF	HR408	FAP	-	383110.06N 0284858.69W	-	5.0	R	HRC05	382857.93N 0284857.66W	2.2
TF	RW10	MAPT	Y	383111.51N 0284330.27W	100 (089.7)	4.3	-	-	-	-
TF	HR406	-	-	383111.96N 0284135.61W	100 (089.7)	1.5	-	-	-	-
RF	HR404	-	-	382200.43N 0284321.71W	-	16.2	R	HRC06	382629.67N 0284133.89W	4.7
TF	HR402	-	-	382257.85N 0284713.60W	298 (287.5)	3.2	-	-	-	-
RF	HR401	MAHP	-	382322.72N 0284825.50W	-	1.0	R	HRC17	382727.15N 0284526.00W	4.7
HM	HR401	-	-	382322.72N 0284825.50W	-	-	L	-	-	-

Waypoint Identifier	Altitude	Speed	RNP Value NM	Navigation Specification	Remarks
VELAS	+5000	220 KT	0.3	RNP AR APCH	-
HR430	+1600	-	0.3	RNP AR APCH	-
HR428	+1600	-	0.3	RNP AR APCH	-
HR426	+1600	-	0.3	RNP AR APCH	-
HR424	+1500	-	0.3	RNP AR APCH	-
HR422	+1500	240 KT	0.3	RNP AR APCH	-
HR420	+1500	200 KT	0.3	RNP AR APCH	-
HR408	@1500	-	0.3/0.2/0.1	RNP AR APCH	-
RW10	-	-	0.3/0.2/0.1	RNP AR APCH	-
HR406	-	-	0.3/0.2/0.1	RNP AR APCH	-
HR404	-	-	0.3	RNP AR APCH	-
HR402	-	-	0.3	RNP AR APCH	-
HR401	+2100	230 KT	0.3	RNP AR APCH	-
HR401	+2100	230 KT	0.3	RNP AR APCH	-

Horta RNAV Holdings							
HLDG ID	INBD TRACK		Turn direction	max IAS ( kt )	MNM HLDG ALT FL/ft (MSL)	TIME (MIN) or DIST OUBD	Controlling Unit
	MAG	(TRUE)					
HR401	311	(300.1)	L	230	2100 ft	1 min	Horta TWR
VELAS	247	(236.1)	R	220	5000 ft	1 min	Horta TWR