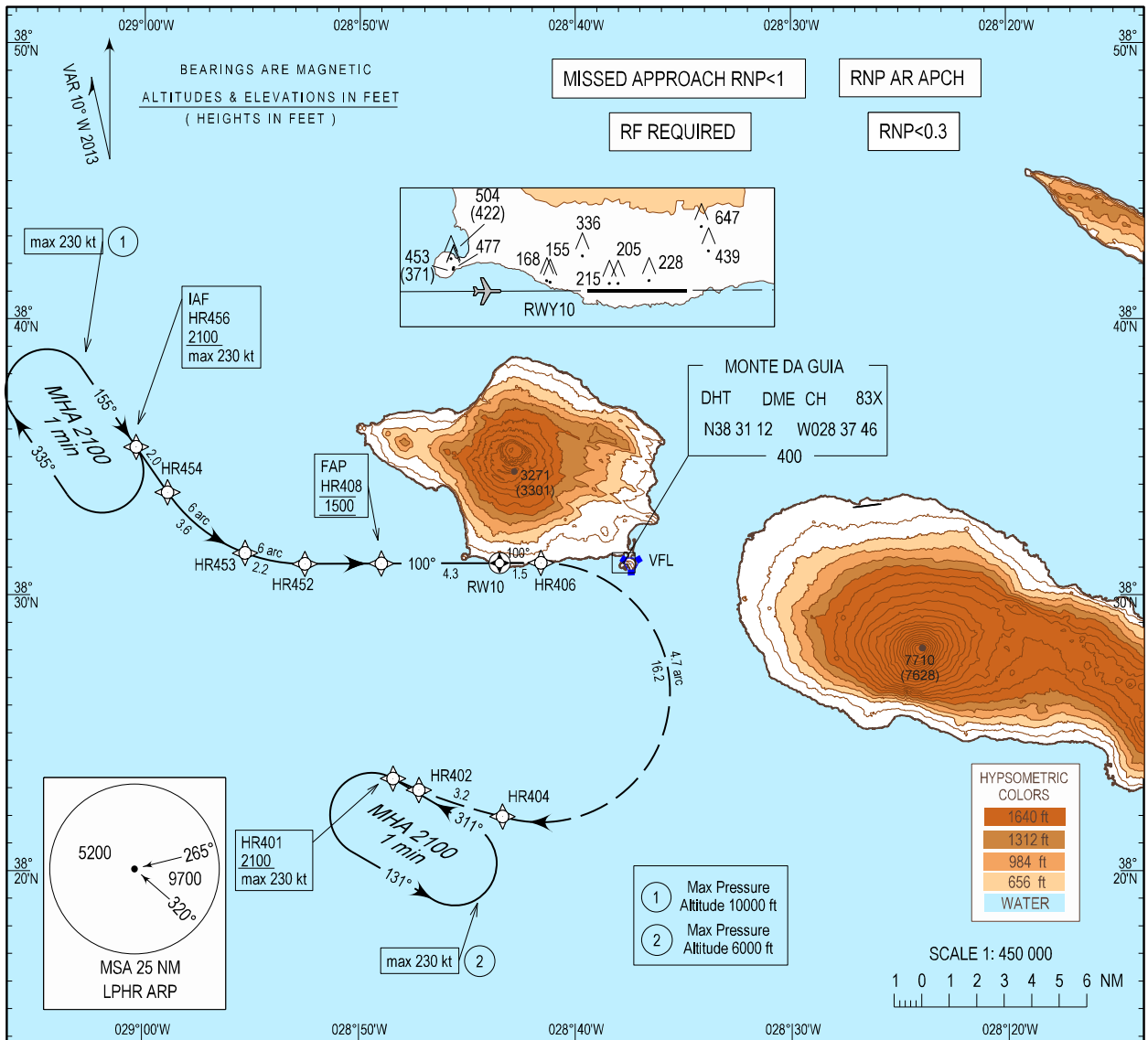


INSTRUMENT
APPROACH
CHART - ICAO

AD ELEV 118 ft
HEIGHTS RELATED
THR RWY 10 - ELEV 82 ft

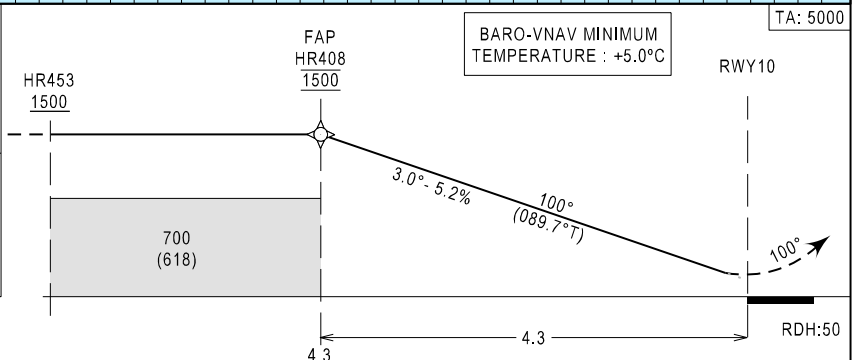
ACC 132.150
APP 120.600
TWR 118.000

HORTA / LPHR
RNP W RWY10 (AR)



MISSED APPROACH
 Climb to 2100 ft via RNP AR missed approach track HR406-HR404-HR402 to HR401.
 At HR401, hold or start a new approach via HR401 or follow ATC instructions.
 Note: RNP 0.3 required from HR406 until HR401

RCF: Squawk 7600.
 Proceed as above.
 On HR401 make one complete holding pattern at 2100 ft and then proceed to perform RNP X RWY10 approach procedure.



	CAT A		CAT B		CAT C	
	DA(H)	OCH	DA(H)	OCH	DA(H)	OCH
③ RNP 0.3	640(558)	552	650(568)	564	660(578)	572
④ RNP 0.2	640(558)	552	650(568)	564	660(578)	572
⑤ RNP 0.1	590(508)	501	600(518)	513	610(528)	521

- ③ RNP 0.3 is required until HR406
- ④ RNP 0.2 is required until HR406
- ⑤ RNP 0.1 is required until HR406

New DME DHT. New text boxes. New chart IDENT.

Instrument Approach Procedure Coding Table

Horta RNP W RWY 10 (AR)

Path Terminator	Waypoint				Course/Track MAG (True)	Dist NM	Turn Direction	ARC Centre Waypoint		ARC Radius NM
	Identifier	Type	Flyover	Coordinates				Identifier	Coordinates	
IF	HR456	IAF	-	383522.36N 0290021.02W	-	-	-	-	-	-
TF	HR454	-	-	383343.94N 0285853.25W	155 (145.0)	2.0	-	-	-	-
RF	HR453	IF	-	383132.30N 0285517.37W	-	3.6	L	HRC08	383711.81N 0285234.35W	6.0
RF	HR452	-	-	383108.99N 0285231.22W	-	2.2	L	HRC08	383711.81N 0285234.35W	6.0
TF	HR408	FAP	-	383110.06N 0284858.69W	100 (089.6)	2.8	-	-	-	-
TF	RW10	MAPT	Y	383111.51N 0284330.27W	100 (089.7)	4.3	-	-	-	-
TF	HR406	-	-	383111.96N 0284135.61W	100 (089.7)	1.5	-	-	-	-
RF	HR404	-	-	382200.43N 0284321.71W	-	16.2	R	HRC06	382629.67N 0284133.89W	4.7
TF	HR402	-	-	382257.85N 0284713.60W	298 (287.5)	3.2	-	-	-	-
RF	HR401	-	-	382322.72N 0284825.50W	-	1.0	R	HRC17	382727.15N 0284526.00W	4.7
HM	HR401	-	-	382322.72N 0284825.50W	-	-	L	-	-	-

Waypoint Identifier	Altitude	Speed	RNP Value NM	Navigation Specification	Remarks
HR456	+2100	230 KT	0.3	RNP AR APCH	-
HR454	+1500	-	0.3	RNP AR APCH	-
HR453	+1500	-	0.3	RNP AR APCH	-
HR452	+1500	-	0.3	RNP AR APCH	-
HR408	@1500	-	0.3/0.2/0.1	RNP AR APCH	-
RW10	-	-	0.3/0.2/0.1	RNP AR APCH	-
HR406	-	-	0.3/0.2/0.1	RNP AR APCH	-
HR404	-	-	0.3	RNP AR APCH	-
HR402	-	-	0.3	RNP AR APCH	-
HR401	+2100	230 KT	0.3	RNP AR APCH	-
HR401	+2100	230 KT	0.3	RNP AR APCH	-

Horta RNAV Holdings

HLDG ID	INBD TRACK		Turn direction	max IAS (kt)	MNM HLDG ALT FL/ft (MSL)	TIME (MIN) or DIST OUBD	Controlling Unit
	MAG	(TRUE)					
HR401	311	(300.1)	L	230	2100 ft	1 min	Horta TWR
HR456	155	(145.0)	R	230	2100 ft	1 min	Horta TWR