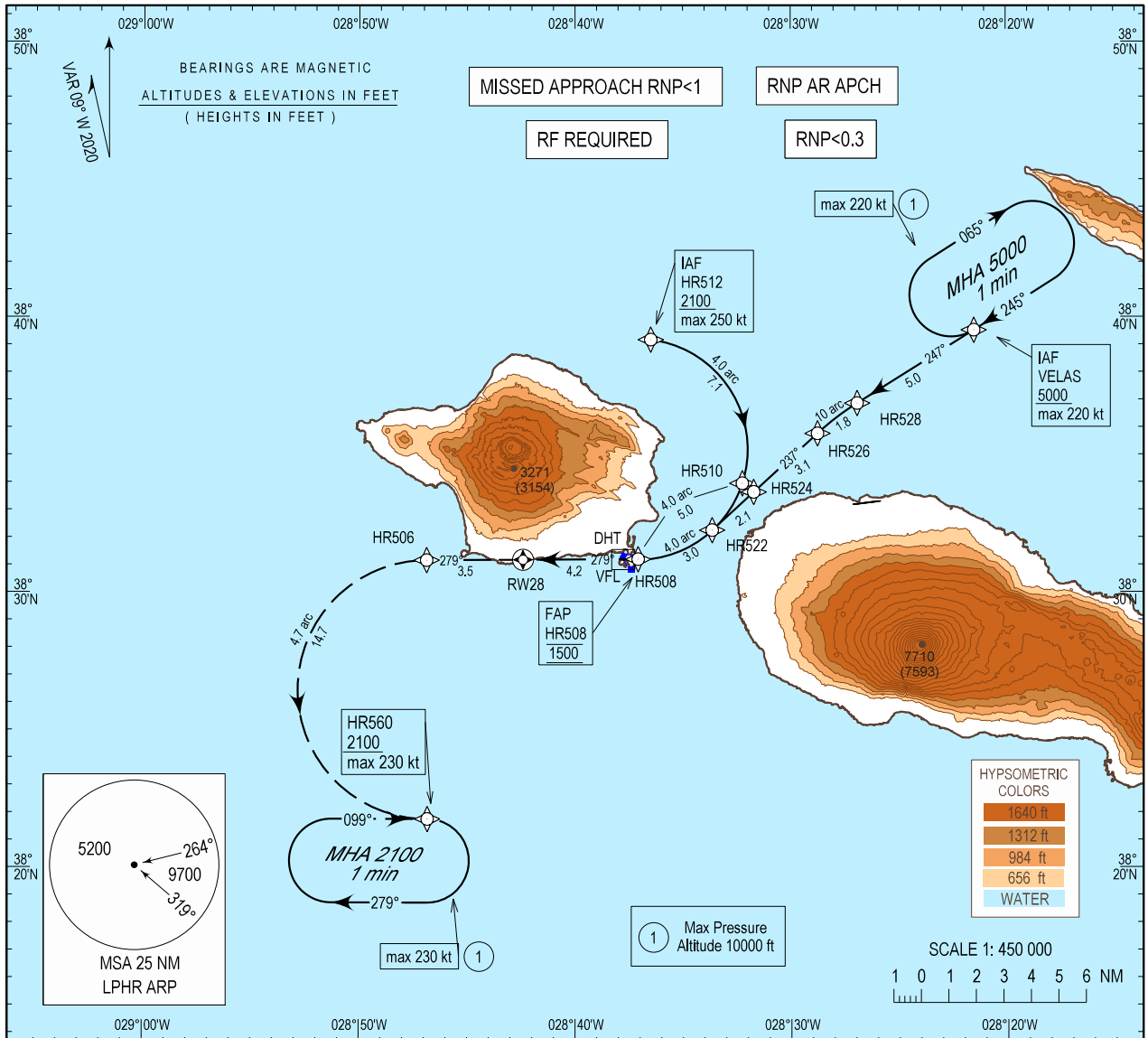


INSTRUMENT
APPROACH
CHART - ICAO

AD ELEV 117 ft
HEIGHTS RELATED
THR RWY 28 - ELEV 117 ft

SANTA MARIA RADAR 132.150
HORTA APPROACH 120.600
HORTA TOWER 118.000

HORTA (LPHR)
RNP Z RWY28 (AR)



MISSED APPROACH
Climb to 2100 ft via RNP AR missed approach track HR506 to HR560.
At HR560 hold or start a new approach via HR560 or follow ATC instruction.
Note:RNP 0.3 required from HR506 until HR560

RCF: Squawk 7600.
Proceed as above.
On HR560 make one complete holding pattern at 2100 ft and then proceed to perform RNP Y RWY28 approach procedure.

TA: 5000
RWY28
BARO-VNAV MINIMUM TEMPERATURE : +5.0°C
FAP HR508 1500
HR510 HR524 1500

RDH:50
4.2
4.2

279°
279° (269.8°T)
3.0° - 5.2%

1100 (982)

	CAT A		CAT B		CAT C	
	DA(H)	OCH	DA(H)	OCH	DA(H)	OCH
② RNP 0.3	710 (593)	587	730 (613)	609	750 (633)	627
③ RNP 0.2	560 (443)	440	580 (463)	461	590 (473)	472
④ RNP 0.1	420 (303)	246	420 (303)	258	420 (303)	266

② RNP 0.3 is required until HR506
③ RNP 0.2 is required until HR506
④ RNP 0.1 is required until HR506

MAGVAR updated. AD ELEV and THR ELEV updated.

Instrument Approach Procedure Coding Table										
Horta RNP Z RWY 28 (AR)										
Path Terminator	Waypoint				Course/Track MAG (True)	Dist NM	Turn Direction	ARC Centre Waypoint		ARC Radius NM
	Identifier	Type	Flyover	Coordinates				Identifier	Coordinates	
IF	VELAS	IAF	-	383931.89N 0282130.62W	-	-	-	-	-	-
TF	HR528	-	-	383652.74N 0282655.60W	247 (238.0)	5.0	-	-	-	-
RF	HR526	-	-	383546.90N 0282845.90W	-	1.8	L	HRC11	382823.51N 0282010.09W	10.0
TF	HR524	IF	-	383339.29N 0283143.44W	237 (227.5)	3.1	-	-	-	-
TF	HR522	-	-	383216.10N 0283339.03W	237 (227.5)	2.1	-	-	-	-
RF	HR508	FAP	-	383112.89N 0283704.66W	-	3.0	R	HRC10	383513.13N 0283705.88W	4.0
IF	HR512	IAF	-	383911.65N 0283629.29W	-	-	-	-	-	-
RF	HR510	IF	-	383358.18N 0283215.11W	-	7.1	R	HRC10	383513.13N 0283705.88W	4.0
RF	HR508	FAP	-	383112.89N 0283704.66W	-	5.0	R	HRC10	383513.13N 0283705.88W	4.0
TF	RW28	MAPT	Y	383111.76N 0284224.43W	279 (269.8)	4.2	-	-	-	-
TF	HR506	-	-	383110.65N 0284652.01W	279 (269.7)	3.5	-	-	-	-
RF	HR560	MAHP	-	382146.07N 0284649.96W	-	14.7	L	HRC14	382628.36N 0284649.96W	4.7
HM	HR560	-	-	382146.07N 0284649.96W	-	-	R	-	-	-

Waypoint Identifier	Altitude	Speed	RNP Value NM	Navigation Specification	Remarks
VELAS	+5000	220 KT	0.3	RNP AR APCH	-
HR528	-	-	0.3	RNP AR APCH	-
HR526	-	-	0.3	RNP AR APCH	-
HR524	+1500	-	0.3	RNP AR APCH	-
HR522	-	-	0.3	RNP AR APCH	-
HR508	@1500	-	0.3/0.2/0.1	RNP AR APCH	-
HR512	+2100	250 KT	0.3	RNP AR APCH	-
HR510	+1500	-	0.3	RNP AR APCH	-
HR508	@1500	-	0.3/0.2/0.1	RNP AR APCH	-
RW28	-	-	0.3/0.2/0.1	RNP AR APCH	-
HR506	-	-	0.3/0.2/0.1	RNP AR APCH	-
HR560	+2100	230 KT	0.3	RNP AR APCH	-
HR560	+2100	230 KT	0.3	RNP AR APCH	-

Horta RNAV Holdings							
HLDG ID	INBD TRACK		Turn direction	max IAS (kt)	MNM HLDG ALT FL/ft (MSL)	TIME (MIN) or DIST OUBD	Controlling Unit
	MAG	(TRUE)					
HR560	099	(090.0)	R	230	2100 ft	1 min	Horta TWR
VELAS	245	(236.1)	R	220	5000 ft	1 min	Horta TWR