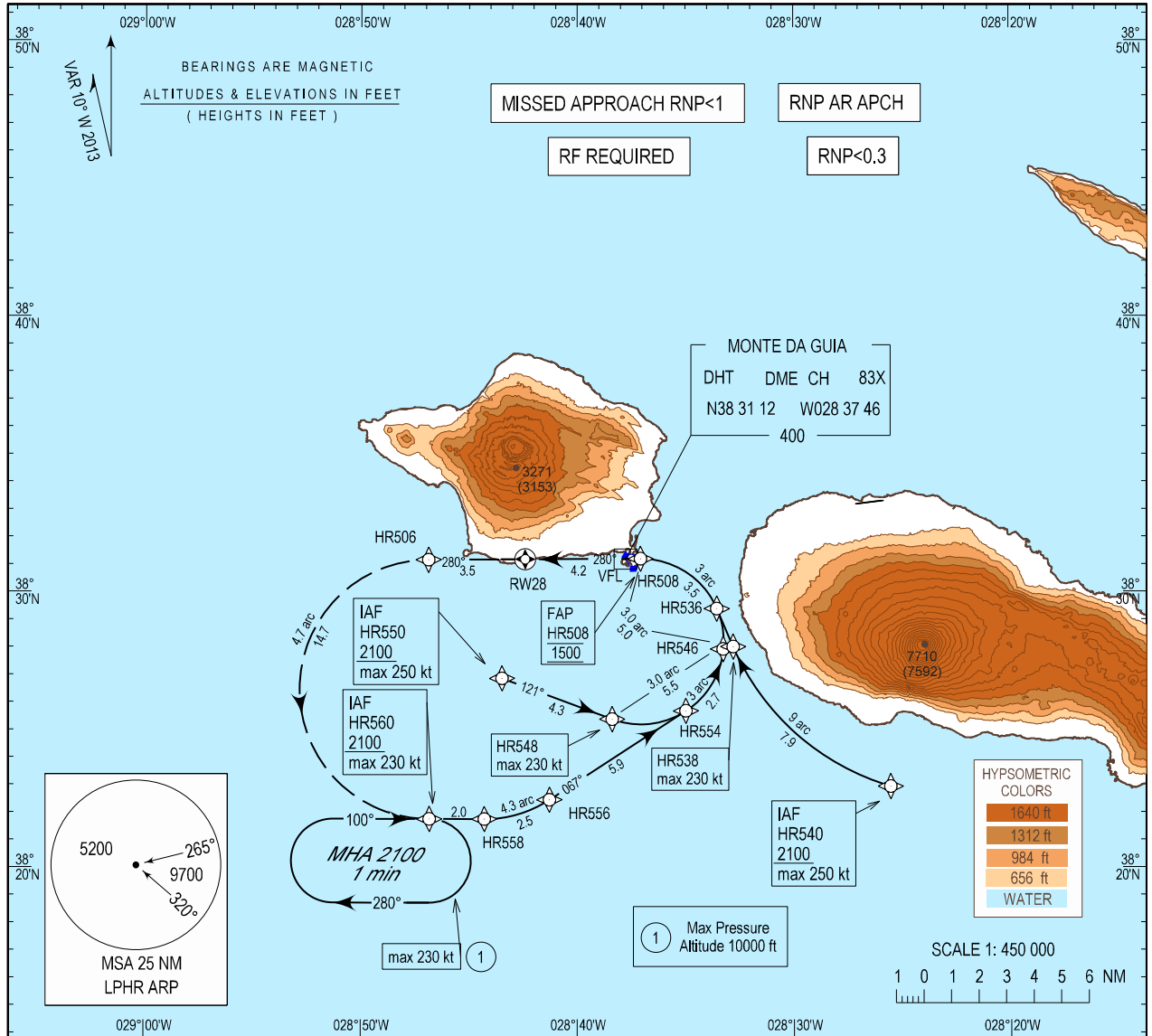


INSTRUMENT
APPROACH
CHART - ICAO

AD ELEV 118 ft
HEIGHTS RELATED
THR RWY 28 - ELEV 118 ft

ACC 132.150
APP 120.600
TWR 118.000

HORTA / LPHR
RNP Y RWY28 (AR)



MISSED APPROACH
Climb to 2100 ft via RNP AR missed approach track HR506 to HR560.
At HR560 hold or start a new approach via HR560 or follow ATC instruction.
Note: RNP 0.3 required from HR506 until HR560

RCF: Squawk 7600.
Proceed as above.
On HR560 make one complete holding pattern at 2100 ft and then proceed to perform RNP Y RWY28 approach procedure.

TA: 5000
RWY28
BARO-VNAV MINIMUM TEMPERATURE : +5.0°C
FAP HR508 1500
HR538 HR546 1500

RDH:50
1100 (982)

	CAT A		CAT B		CAT C	
	DA(H)	OCH	DA(H)	OCH	DA(H)	OCH
② RNP 0.3	710 (592)	586	730 (612)	608	750 (632)	626
③ RNP 0.2	560 (442)	439	580 (462)	460	590 (472)	471
④ RNP 0.1	420 (302)	245	420 (302)	257	420 (302)	265

② RNP 0.3 is required until HR506
③ RNP 0.2 is required until HR506
④ RNP 0.1 is required until HR506

New DME DHT. New text boxes. New chart IDENT.

Instrument Approach Procedure Coding Table										
Horta RNP Y RWY 28 (AR)										
Path Terminator	Waypoint				Course/Track MAG (True)	Dist NM	Turn Direction	ARC Centre Waypoint		ARC Radius NM
	Identifier	Type	Flyover	Coordinates				Identifier	Coordinates	
IF	HR540	IAF	-	382256.99N 0282531.75W	-	-	-	-	-	-
RF	HR538	IF	-	382801.47N 0283247.91W	-	7.9	R	HRC13	383135.20N 0282216.13W	9.0
TF	HR536	-	-	382924.16N 0283333.32W	347 (336.7)	1.5	-	-	-	-
RF	HR508	FAP	-	383112.89N 0283704.66W	-	3.5	L	HRC12	382812.70N 0283703.76W	3.0
IF	HR560	IAF	-	382146.07N 0284649.96W	-	-	-	-	-	-
TF	HR558	-	-	382146.04N 0284417.38W	100 (090.0)	2.0	-	-	-	-
RF	HR556	-	-	382228.13N 0284117.12W	-	2.5	L	HRC18	382605.73N 0284417.23W	4.3
TF	HR554	-	-	382541.60N 0283458.93W	067 (056.9)	5.9	-	-	-	-
RF	HR546	IF	-	382756.10N 0283315.54W	-	2.7	L	HRC12	382812.70N 0283703.76W	3.0
IF	HR550	IAF	-	382652.40N 0284328.60W	-	-	-	-	-	-
TF	HR548	-	-	382523.71N 0283823.25W	121 (110.2)	4.3	-	-	-	-
RF	HR546	IF	-	382756.10N 0283315.54W	-	5.5	L	HRC12	382812.70N 0283703.76W	3.0
RF	HR508	FAP	-	383112.89N 0283704.66W	-	5.0	L	HRC12	382812.70N 0283703.76W	3.0
TF	RW28	MAPT	Y	383111.76N 0284224.43W	280 (269.8)	4.2	-	-	-	-
TF	HR506	-	-	383110.65N 0284652.01W	280 (269.7)	3.5	-	-	-	-
RF	HR560	MAHP	-	382146.07N 0284649.96W	-	14.7	L	HRC14	382628.36N 0284649.96W	4.7
HM	HR560	-	-	382146.07N 0284649.96W	-	-	R	-	-	-

Waypoint Identifier	Altitude	Speed	RNP Value NM	Navigation Specification	Remarks
HR540	+2100	250 KT	0.3	RNP AR APCH	-
HR538	+1500	230 KT	0.3	RNP AR APCH	-
HR536	-	-	0.3	RNP AR APCH	-
HR508	@1500	-	0.3/0.2/0.1	RNP AR APCH	-
HR560	+2100	230 KT	0.3	RNP AR APCH	-
HR558	-	-	0.3	RNP AR APCH	-
HR556	-	250 KT	0.3	RNP AR APCH	-
HR554	-	-	0.3	RNP AR APCH	-
HR546	+1500	-	0.3	RNP AR APCH	-
HR550	+2100	250 KT	0.3	RNP AR APCH	-
HR548	-	-	0.3	RNP AR APCH	-
HR546	+1500	-	0.3	RNP AR APCH	-
HR508	@1500	-	0.3/0.2/0.1	RNP AR APCH	-
RW28	-	-	0.3/0.2/0.1	RNP AR APCH	-
HR506	-	-	0.3/0.2/0.1	RNP AR APCH	-
HR560	+2100	230 KT	0.3	RNP AR APCH	-
HR560	+2100	230 KT	0.3	RNP AR APCH	-

Horta RNAV Holdings							
HLDG ID	INBD TRACK		Turn direction	max IAS (kt)	MNM HLDG ALT FL/ft (MSL)	TIME (MIN) or DIST OUBD	Controlling Unit
	MAG	(TRUE)					
HR560	100	(090.0)	R	230	2100 ft	1 min	Horta TWR