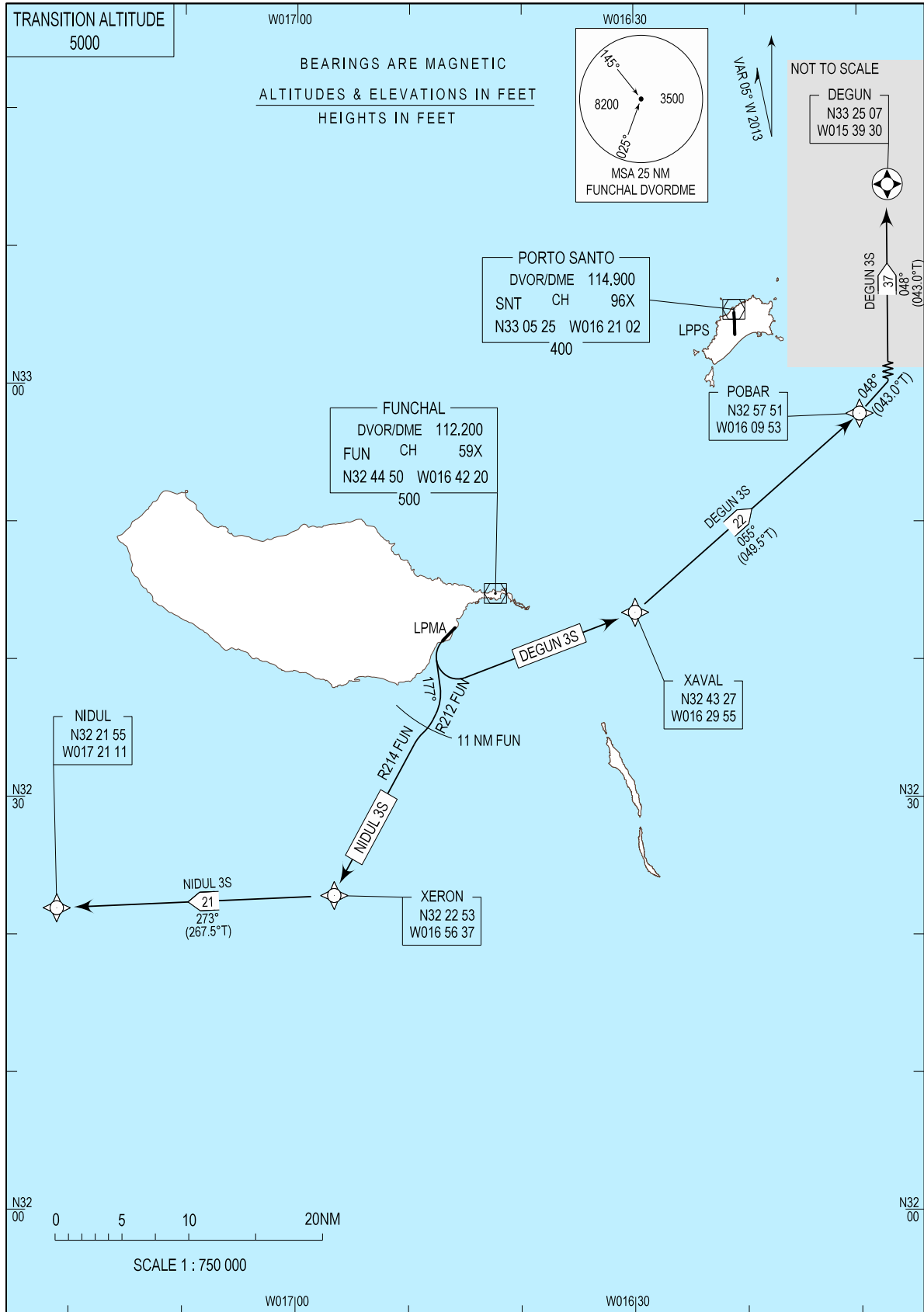


STANDARD DEPARTURE CHART -
INSTRUMENT (SID) - ICAO

MADEIRA INFORMATION 130.355
MADEIRA TOWER 118.355
MADEIRA APPROACH 119.605

MADEIRA / LPMA
RNAV RWY 23
DEGUN 3S, NIDUL 3S



New CS and FREQ. Chart redrawn.

STANDARD INSTRUMENT DEPARTURE (SID) FMS RNAV RWY23

RUNWAY 23				
Designator	Route	After Take-off		Remarks
		Climb to ALT / FL	Contact	
DEGUN3S	XAVAL - POBAR - DEGUN	FL060	Madeira Approach 119.605 MHZ	
NIDUL3S	Proceed on track 177; intercept and proceed on RDL 212 FUN DVOR/DME; after 11NM FUN DVO/DME or above 3500FT QNH turn right to intercept and proceed on RDL 214 FUN DVOR/DME to XERON; at XERON or crossing FL100, whichever is earlier turn right to NIDUL.	FL100		