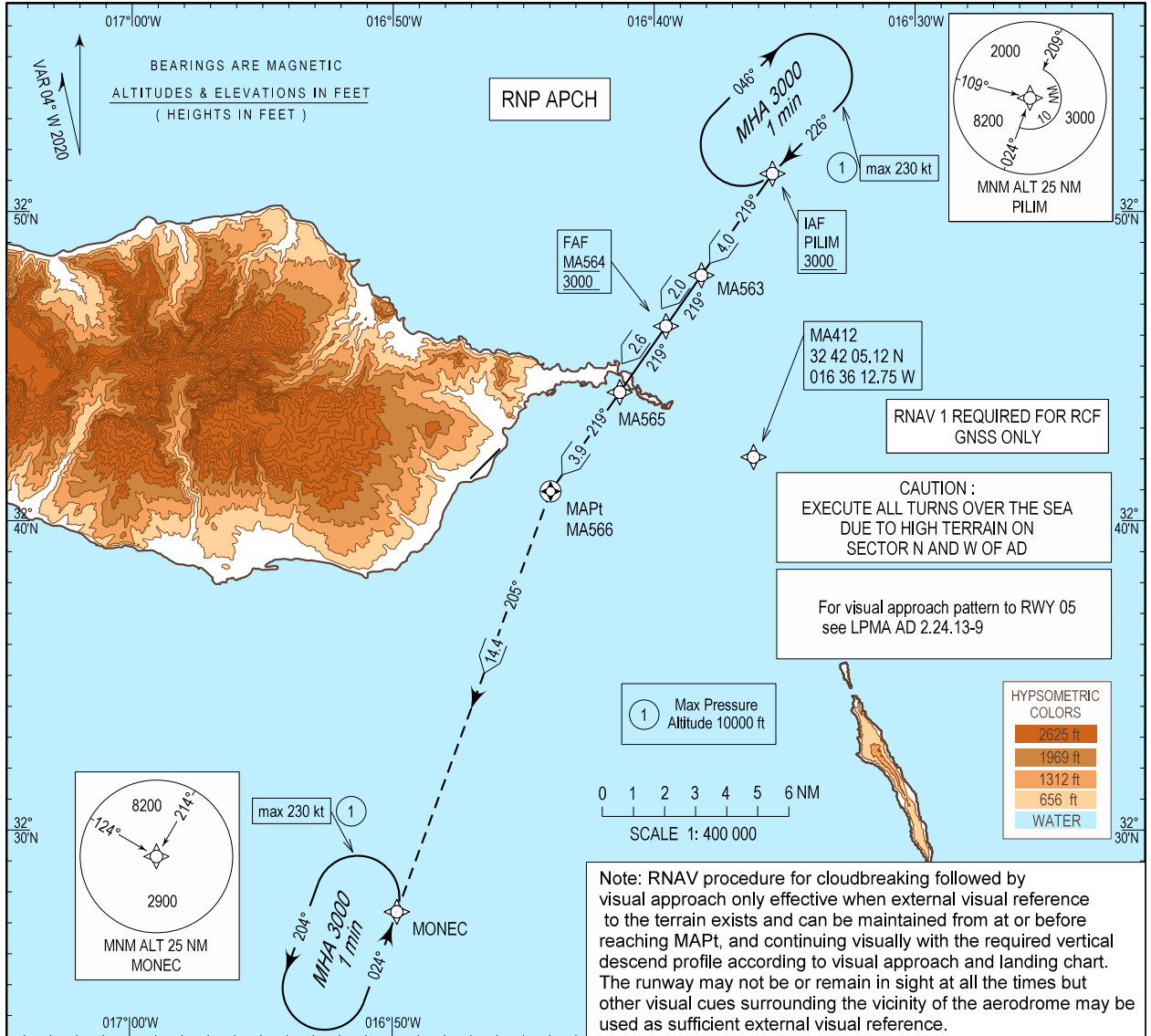


INSTRUMENT APPROACH CHART - ICAO  
AD ELEV 191 ft  
HEIGHTS RELATED THR RWY 05 - ELEV 146 ft

MADEIRA INFORMATION 130.355  
MADEIRA APPROACH 119.605  
MADEIRA TOWER 118.355

MADEIRA / LPMA  
RNP RWY05 - a



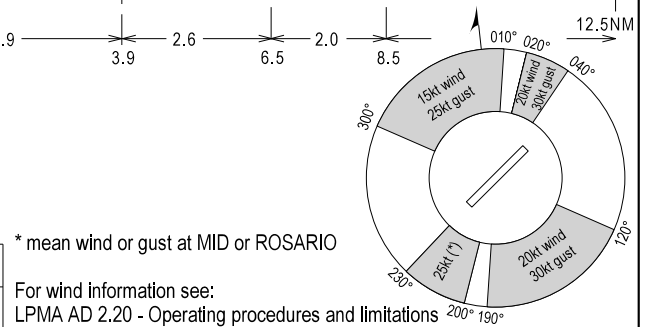
**MISSED APPROACH**  
Turn left to MONEC climbing to 3000 ft. At MONEC hold or follow ATC instructions.

**RCF: Squawk 7600.** Proceed as above. On MONEC holding proceed to MA412 then to PILIM holding, make one complete holding pattern at 3000 ft to perform another RNP RWY05 approach.

CATEGORY	MINIMA			
	A	B	C	D
MDA (H)	940	500	500	500
VIS	794	5000	5000	5000
CEILING	800	245	245	245

MA564 - MA566 (NM)	6.5	5	4	3	2	1
ALTITUDE (HEIGHT)	3000 (2854)	2525 (2379)	2210 (2064)	1895 (1749)	1580 (1434)	1260 (1114)

Speed	kt	80	100	120	140	160	180	200
Rate of descent (5.2%)	ft / min	420	525	630	730	835	940	1045



Wind limitation sectors changed.

LPMA RNP RWY05 - a

Path Terminator	Waypoint				Course/Track MAG (True)	Dist NM	Turn Direction	Altitude	Speed	RNP Value NM	Navigation Specification	Remarks
	Identifier	Type	Flyover	Coordinates								
IF	PILIM	IAF	-	325114.86N 0163528.64W	-	-	-	+3000FT	230KT	1.0	RNP APCH	-
TF	MA563	IF	-	324757.77N 0163811.88W	219 (215.0)	4.00	-	+3000FT	-	1.0	RNP APCH	-
TF	MA564	FAF	-	324619.20N 0163933.43W	219 (215.0)	2.00	-	@3000FT	-	0.3	RNP APCH	-
TF	MA565	-	-	324411.05N 0164119.36W	219 (214.9)	2.60	-	+1430FT	-	0.3	RNP APCH	-
TF	MA566	MAPT	Y	324058.77N 0164358.11W	219 (214.9)	3.90	-	-	-	1.0	RNP APCH	-
TF	MONEC	-	-	322722.93N 0164949.39W	205 (200.1)	14.44	L	+3000FT	230KT	1.0	RNP APCH	-
HM	MONEC	-	-	322722.93N 0164949.39W	-	-	L	+3000FT	230KT	1.0	RNP APCH	-

RNAV HOLDING

HLDG ID	Inbound Track MAG (true)	Turn Direction	MAX IAS (KT)	MAX/MNM HLDG ALT FL/FT (MSL)	TIME (MIN) or DIST Outbound	Controlling Unit
PILIM	226(222.0)	R	230	FL100 / 3000FT	1 MIN	Madeira TWR
MONEC	024(020.0)	L	230	FL100 / 3000FT	1 MIN	Madeira TWR