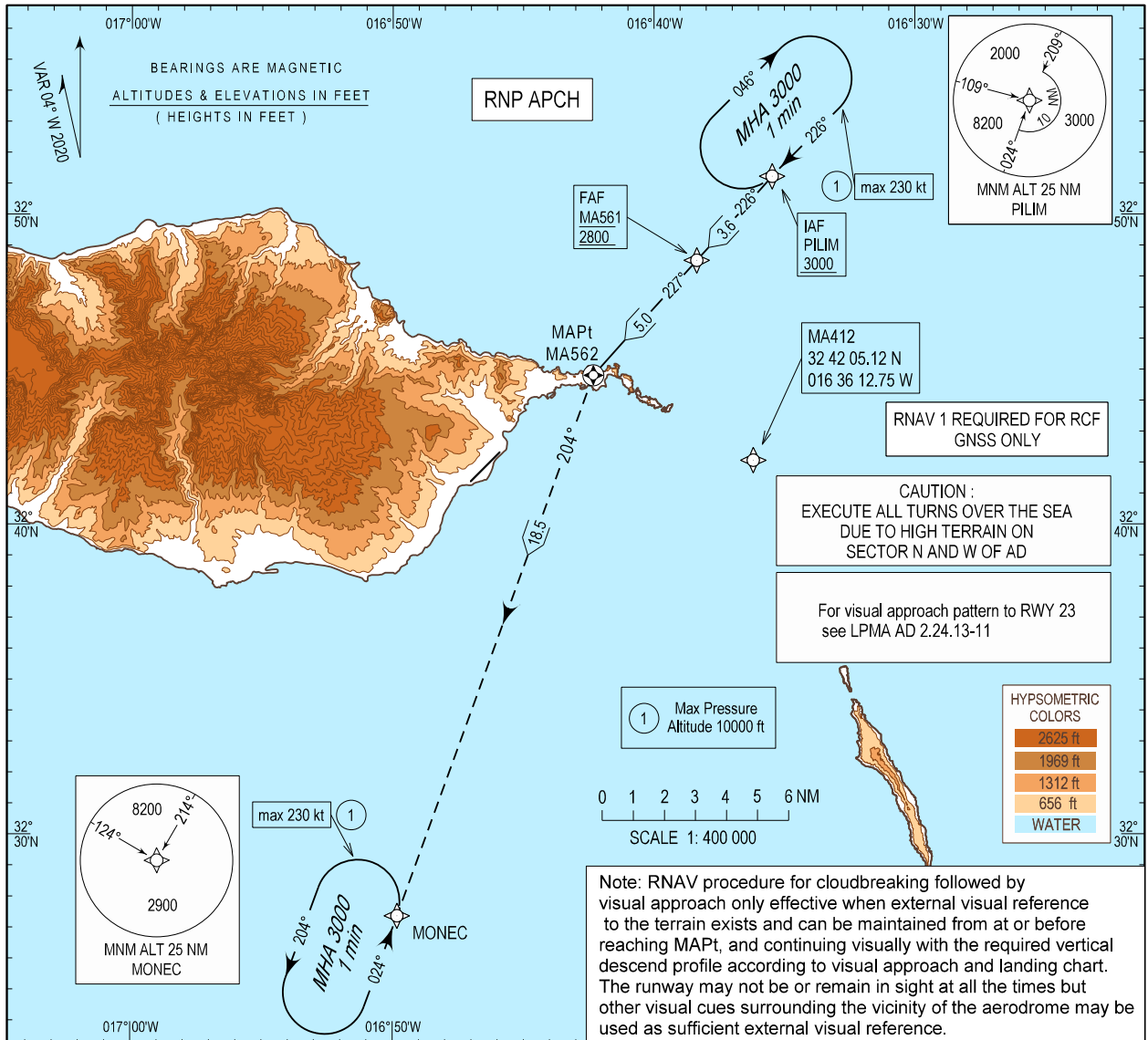


INSTRUMENT APPROACH CHART - ICAO
AD ELEV 191 ft
HEIGHTS RELATED THR RWY 23 - ELEV 191 ft

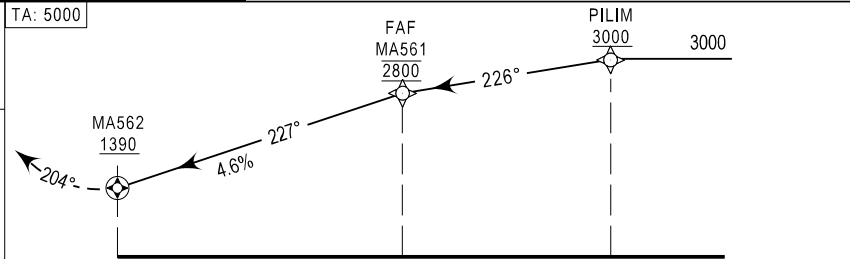
MADEIRA ARR INFORMATION 130.355
MADEIRA APPROACH 119.605
MADEIRA TOWER 118.355

MADEIRA (LPMA)
RNP RWY23-b



MISSED APPROACH
Turn left to MONEC climbing to 3000 ft.
At MONEC hold or follow ATC instructions.

RCF: Squawk 7600. Proceed as above.
On MONEC holding proceed to MA412 then to PILIM holding, make one complete holding pattern at 3000 ft to perform another RNP RWY23 approach.



CATEGORY	MINIMA			
	A - B - C - D	MDA (H)	VIS	CEILING
CIRCLING	1390 (1199)	7000 m	1200 / 370 m	

	MA561 - MA562 (NM)							
	5	4	3	2	1			
ALTITUDE (HEIGHT)	2800 (2609)	2521 (2330)	2242 (2051)	1900 (1754)	1600 (1454)			
Speed	kt	80	100	120	140	160	180	200
Rate of descent (5.0%)	ft / min	400	500	600	700	800	900	1000

* mean wind or gust at MID or ROSARIO

For wind information see:
LPMA AD 2.20 - Operating procedures and limitations

Note: RNAV procedure for cloudbreaking followed by visual approach only effective when external visual reference to the terrain exists and can be maintained from at or before reaching MAPt, and continuing visually with the required vertical descend profile according to visual approach and landing chart. The runway may not be or remain in sight at all the times but other visual cues surrounding the vicinity of the aerodrome may be used as sufficient external visual reference.

Madeira ARR information.

LPMA RNP RWY 23 – b

Path Terminator	Waypoint				Course/Track MAG (True)	Dist NM	Turn Direction	Altitude	Speed	RNP Value NM	Navigation Specification	Remarks
	Identifier	Type	Flyover	Coordinates								
IF	PILIM	IAF	-	325114.86N 0163528.64W	-	-	-	+3000FT	230KT	1.0	RNP APCH	-
TF	MA561	FAF	-	324832.27N 0163821.97W	226 (222.0)	3.64	-	@2800FT	-	0.3	RNP APCH	-
TF	MA562	MAPT	Y	324449.81N 0164219.63W	227 (222.1)	4.98	-	-	-	1.0	RNP APCH	-
TF	MONEC	-	-	322722.93N 0164949.39W	204 (200.0)	18.53	L	+3000FT	230KT	1.0	RNP APCH	-
HM	MONEC	-	-	322722.93N 0164949.39W	-	-	L	+3000FT	230KT	1.0	RNP APCH	-

RNAV HOLDING

HLDG ID	Inbound Track MAG (true)	Turn Direction	MAX IAS (KT)	MAX/MNM HLDG ALT FL/FT (MSL)	TIME (MIN) or DIST Outbound	Controlling Unit
PILIM	226 (222.0)	R	230	FL100 / 3000FT	1 MIN	Madeira TWR
MONEC	024 (020.0)	L	230	FL100 / 3000FT	1 MIN	Madeira TWR