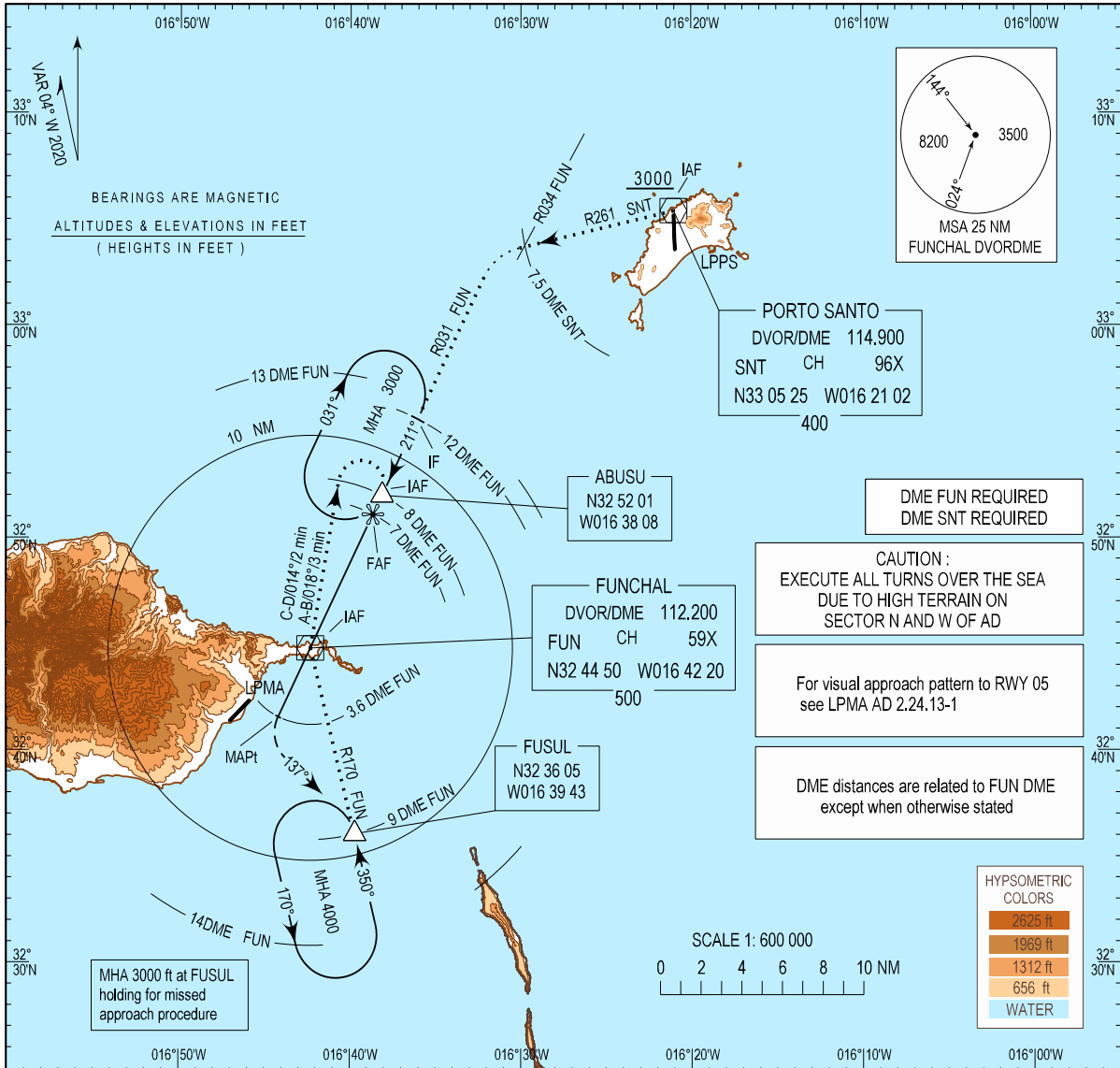


INSTRUMENT APPROACH CHART - ICAO

AD ELEV 191 ft
HEIGHTS RELATED
THR RWY 05 - ELEV 146 ft

MADEIRA ARR INFORMATION 130.355
MADEIRA APPROACH 119.605
MADEIRA TOWER 118.355

MADEIRA (LPMA)
DVOR/DME - CIRCLING
RWY 05

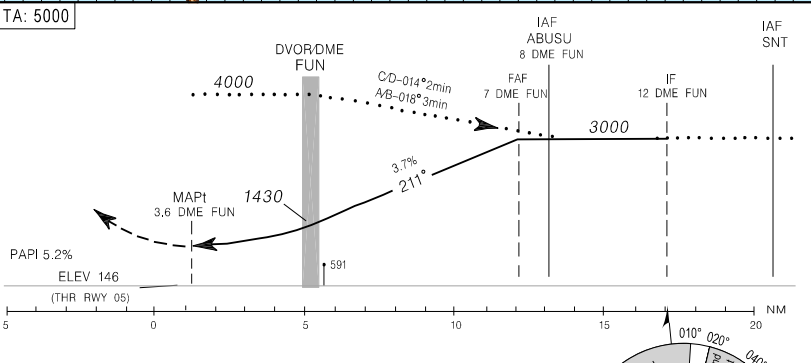


MISSED APPROACH
Turn left heading 137° to intercept R170 to holding FUSUL; climb to 3000 ft.
CTC APP.

Circling is restricted, see LPMA AD 2.24.13-1

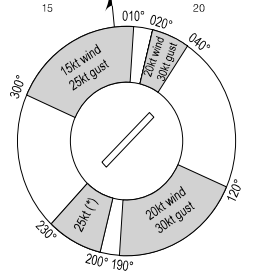
CATEGORY	MINIMA		
	A - B - C - D		
	MDA (H)	VIS	CEILING
CIRCLING	940 (800)	5000 m	800 / 245 m

	DME - FUN	7	6	5	4	3	2	1
ALTITUDE		3000	2755	2550	2325	2100	1875	1650
Speed	kt	80	100	120	140	160	180	
Rate of descent (2.24%)	ft / min	180	225	270	315	360	410	
FUN - MAPt	min:s	2:42	2:09	1:48	1:32	1:21	1:12	



* mean wind or gust at MD or ROSARIO

For wind information see:
LPMA AD 2.20 - Operating procedures
and limitations



Madeira ARR information.

THIS PAGE INTENTIONALLY LEFT BLANK