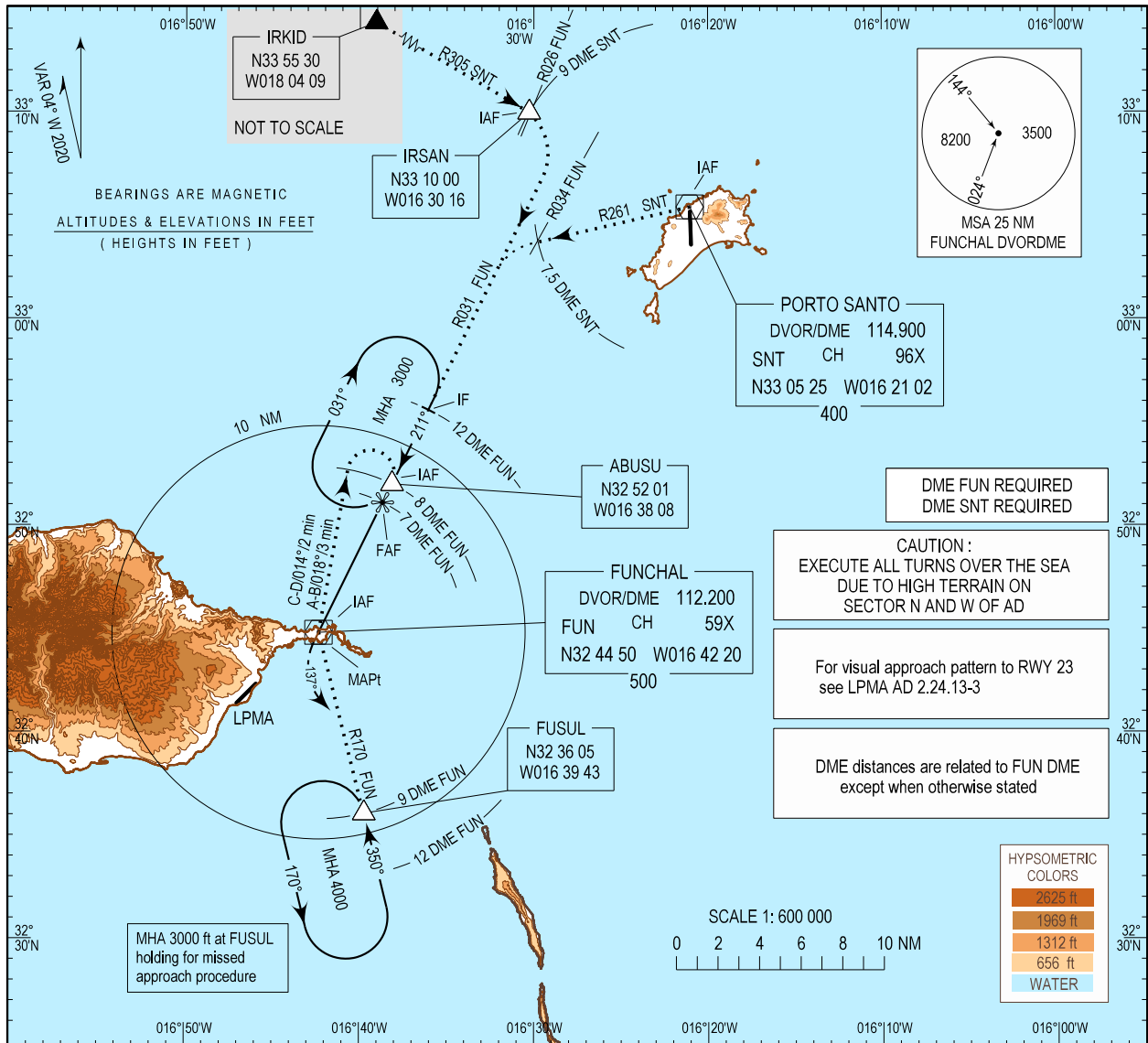


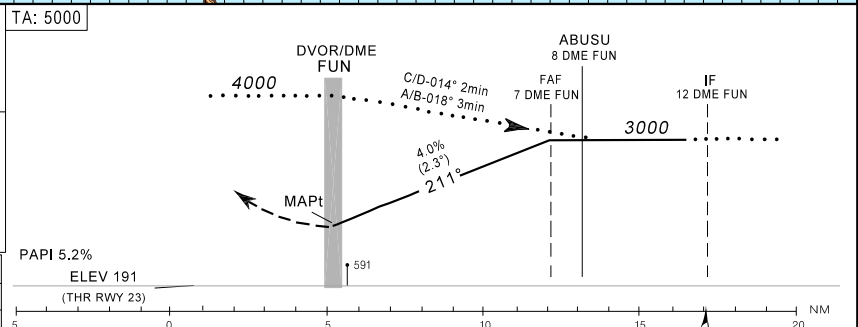
INSTRUMENT APPROACH CHART - ICAO
AD ELEV 191 ft
HEIGHTS RELATED THR RWY 23 - ELEV 191 ft

MADEIRA INFORMATION 130.355
MADEIRA APPROACH 119.605
MADEIRA TOWER 118.355

MADEIRA / LPMA
DVOR/DME - CIRCLING RWY 23



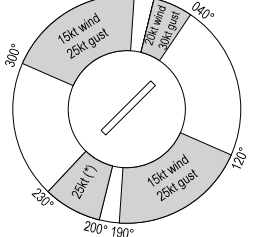
MISSED APPROACH
Turn left heading 137° to intercept R170 to holding FUSUL; climb to 3000 ft. CTC APP.



MINIMA		A - B - C - D					
CATEGORY	MDA (H)	VIS	CEILING				
CIRCLING	1300 (1110)	7000 m	1200 / 370 m				
DME - FUN	7	6	5	4	3	2	1
ALTITUDE	3000	2800	2550	2300	2050	1800	1550
Speed	kt	80	100	120	140	160	180
Rate of descent	ft / min	325	405	490	570	650	730
		4.0% (2.3°)					

* mean wind or gust at MID or ROSARIO

For wind information see:
LPMA AD 2.20 - Operating procedures
and limitations



Wind limitation sectors changed.

THIS PAGE INTENTIONALLY LEFT BLANK