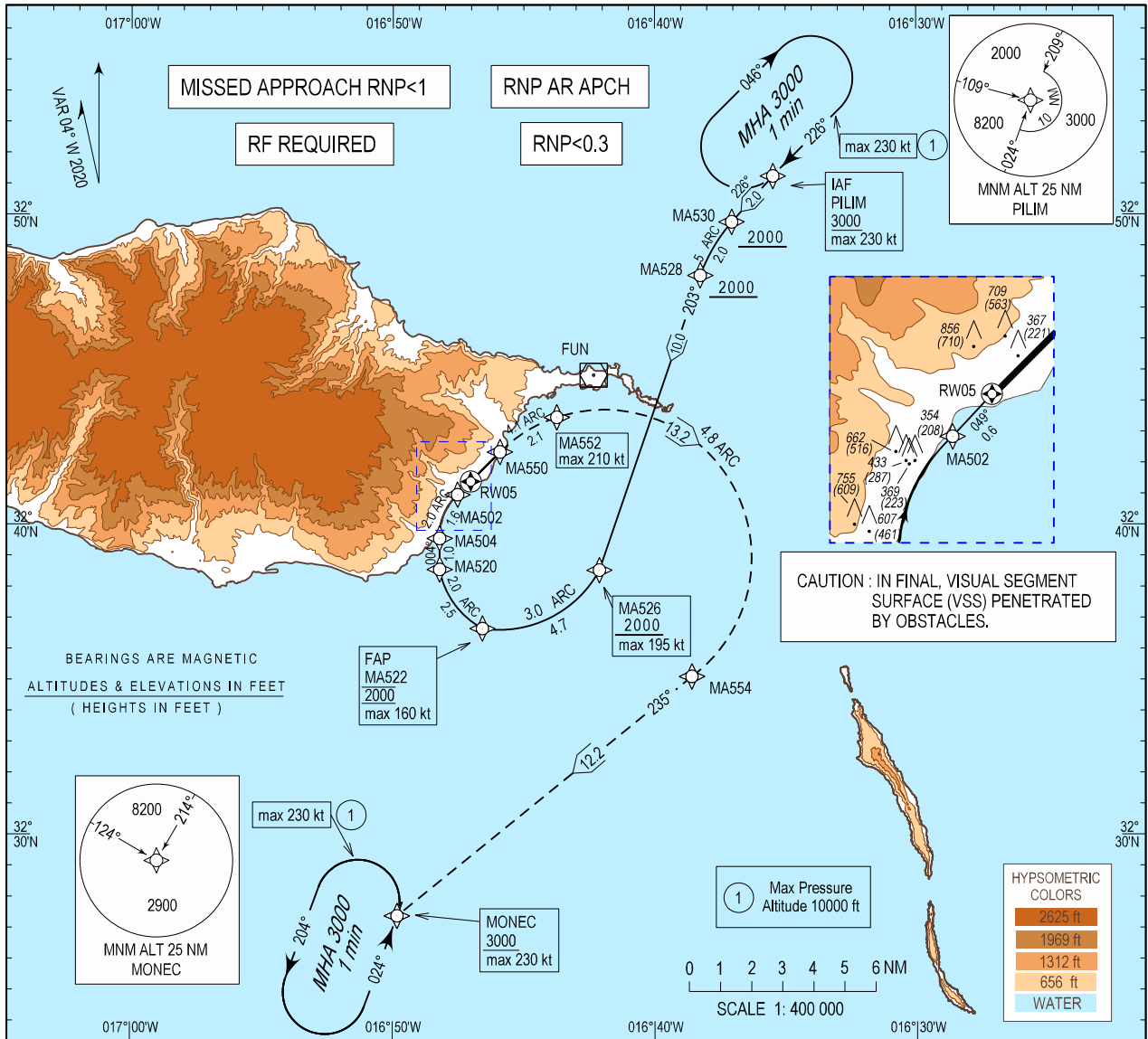


INSTRUMENT  
APPROACH  
CHART - ICAO

AD ELEV 191 ft  
HEIGHTS RELATED  
THR RWY 05 - ELEV 146 ft

MADEIRA ARR INFORMATION 130.355  
MADEIRA APPROACH 119.605  
MADEIRA TOWER 118.355

MADEIRA (LPMA)  
RNP Z RWY 05 (AR)



**MISSED APPROACH**

Climb to 3000 ft via the RNP missed approach track MA550 - MA552 - MA554 to MONEC.  
At MONEC hold or follow ATC instructions.

RCF: Squawk 7600.  
Proceed as above.  
On MONEC holding, make one complete holding pattern at 3000 ft and then proceed to perform RNP Y RWY05 Procedure.

② RNP 0.1/0.2 is required until MA552

TA: 5000 MA526 2000	BARO-VNAV MINIMUM TEMPERATURE : +7.5°C	FAP MA522 2000	MA520 1200	MA504 890	MA502 390	RW05
---------------------------	--	----------------------	---------------	--------------	--------------	------

RF 3.0°  
RF 3° (5.2%)  
RF 0.04° (0.44, 7°)

10.2 4.7 5.7 2.5 3.2 2.2 1.6 0.6 0 RDH:50 THR: 146

	CAT A		CAT B		CAT C		CAT D	
	DA(H)	OCH	DA(H)	OCH	DA(H)	OCH	DA(H)	OCH
RNP 0.3	890 (744)	739	900 (754)	751	910 (764)	759	920 (774)	770
② RNP 0.2	800 (654)	646	810 (664)	658	820 (674)	666	830 (684)	677
② RNP 0.1	500 (354)	353	520 (374)	365	520 (374)	373	530 (384)	384

\* mean wind or gust at MID or ROSARIO  
For wind information see: LPMA AD 2.20 - Operating procedures and limitations

Madeira ARR information.

**Instrument Approach Procedure Coding  
Table Madeira RNP Z RWY 05 (AR)**

Path Terminator	Waypoint				Course/Track MAG (True)	Dist NM	Turn Direction	ARC Centre Waypoint		ARC Radius NM
	Identifier	Type	Flyover	Coordinates				Identifier	Coordinates	
IF	PILIM	IAF	-	325114.8570N 0163528.6380W	-	-	-	-	-	-
TF	MA530	-	-	324946.2150N 0163703.1800W	226.470 (222.006)	1.984	-	-	-	-
RF	MA528	-	-	324802.7050N 0163815.3030W	-	2.011	L	MAC06	324625.0020N 0163238.7640W	5.000
TF	MA526	IF	-	323832.2100N 0164206.6960W	203.410 (198.942)	10.032	-	-	-	-
RF	MA522	FAP	-	323639.1230N 0164634.4420W	-	4.669	R	MAC09	323930.6090N 0164528.4020W	3.000
RF	MA520	-	-	323833.4700N 0164812.5380W	-	2.512	R	MAC04	323833.4480N 0164550.4230W	2.000
TF	MA504	-	-	323933.5900N 0164812.5380W	004.468 (360.000)	1.000	-	-	-	-
RF	MA502	-	-	324058.1010N 0164731.4930W	-	1.559	R	MAC01	323933.5680N 0164550.3960W	2.000
TF	RW05	MAPT	Y	324123.7530N 0164701.5045W	049.132 (044.664)	0.6	-	-	-	-
TF	MA550	-	-	324224.5000N 0164550.4800W	049.137 (044.669)	1.421	-	-	-	-
RF	MA552	-	-	324327.9440N 0164344.1830W	-	2.088	R	MAC10	323931.1360N 0164223.2860W	4.1
RF	MA554	-	-	323506.4730N 0163834.8500W	-	13.159	R	MAC02	323850.7040N 0164209.4860W	4.8
TF	MONEC	-	-	322722.9270N 0164949.3940W	235.473 (231.005)	12.24	-	-	-	-
HM	MONEC	-	-	322722.9270N 0164949.3940W	-	-	L	-	-	-

Waypoint Identifier	Altitude	Speed	RNP Value NM	Navigation Specification	Remarks
PILIM	+3000	230KT	0.3	RNP AR APCH	-
MA530	+2000	-	0.3	RNP AR APCH	-
MA528	+2000	-	0.3	RNP AR APCH	-
MA526	+2000	195 KT	0.3	RNP AR APCH	-
MA522	@2000	160 KT	0.3/0.2/0.1	RNP AR APCH	-
MA520	1200	-	0.3/0.2/0.1	RNP AR APCH	-
MA504	890	-	0.3/0.2/0.1	RNP AR APCH	-
MA502	390	-	0.3/0.2/0.1	RNP AR APCH	-
RW05	-	-	0.3/0.2/0.1	RNP AR APCH	-
MA550	-	-	0.3/0.2/0.1	RNP AR APCH	-
MA552	-	210 KT	0.3/0.2/0.1	RNP AR APCH	-
MA554	-	-	0.3	RNP AR APCH	-
MONEC	+3000	-	0.3	RNP AR APCH	-
MONEC	+3000	-	0.3	RNP AR APCH	-

**RNAV Holding**

HLDG ID	INBD TRACK MAG (TRUE)	Turn Direction	MAX IAS (KT)	MAX/MNM HLDG ALT FL/FT(MSL)	TIME (MIN) or DIST OUBD	Controlling Unit
PILIM	226.468 (222.000)	R	230	FL100 / 3000FT	1 MIN	Madeira TWR
MONEC	024.468 (020.000)	L	230	FL100 / 3000FT	1 MIN	Madeira TWR