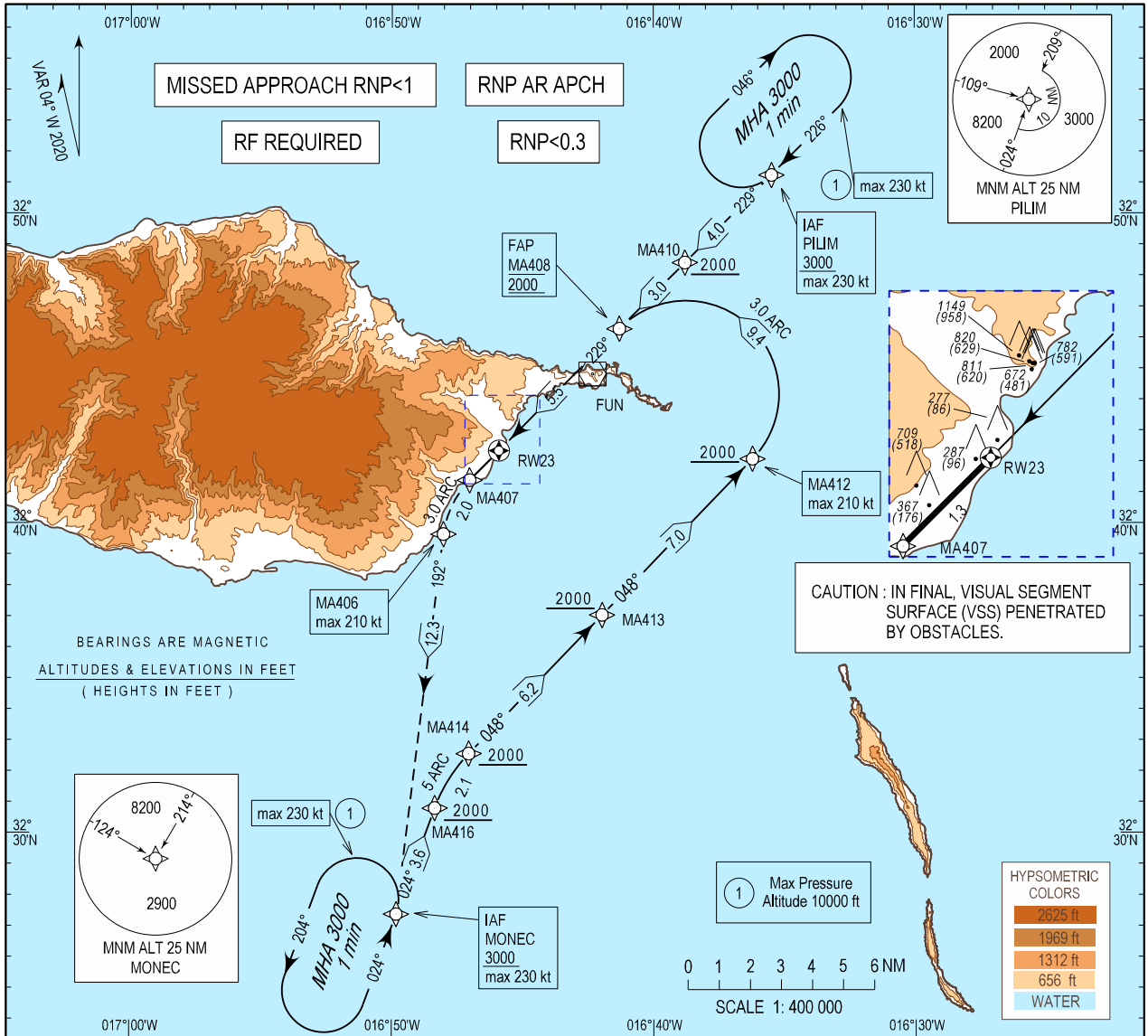


INSTRUMENT  
APPROACH  
CHART - ICAO

AD ELEV 191 ft  
HEIGHTS RELATED  
THR RWY 23 - ELEV 191 ft

MADEIRA ARR INFORMATION 130.355  
MADEIRA APPROACH 119.605  
MADEIRA TOWER 118.355

MADEIRA (LPMA)  
RNP RWY 23 (AR)



MISSED APPROACH

Climb to 3000 ft via the RNP missed approach track MA407 - MA406 to MONEC. At MONEC hold or follow ATC instructions.

RCF: Squawk 7600. Proceed as above. On MONEC holding, make one complete holding pattern at 3000 ft and then proceed to perform RNP RWY23 Procedure.

TA: 5000

BARO-VNAV MINIMUM TEMPERATURE: +7.5°C

FAP MA408 2000

MA410 2000

MA412 2000

RDH:50  
THR: 191

② RNP 0.1/0.2 is required until MA406

	CAT A		CAT B		CAT C		CAT D	
	DA(H)	OCH	DA(H)	OCH	DA(H)	OCH	DA(H)	OCH
RNP 0.3	1160 (969)	965	1180 (989)	986	1200(1009)	1005	1220(1029)	1023
② RNP 0.2	920 (729)	727	940 (749)	748	960 (769)	767	980 (789)	782
② RNP 0.1	490 (299)	295	490 (299)	295	490 (299)	295	490 (299)	295

\* mean wind or gust at MID or ROSARIO

For wind information see: LPMA AD 2.20 - Operating procedures and limitations

Madeira ARR information.

**Instrument Approach Procedure Coding  
Table Madeira RNP RWY 23 (AR)**

Path Terminator	Waypoint				Course/Track MAG (True)	Dist NM	Turn Direction	ARC Centre Waypoint		ARC Radius NM
	Identifier	Type	Flyover	Coordinates				Identifier	Coordinates	
IF	PILIM	IAF	-	325114.8570N 0163528.6380W	-	-	-	-	-	-
TF	MA410	IF	-	324825.4460N 0163847.6060W	229.241 (224.773)	3.969	-	-	-	-
TF	MA408	FAP	-	324617.2640N 0164118.0750W	229.236 (224.768)	3.003	-	-	-	-
IF	MONEC	IAF	-	322722.9270N 0164949.3940W	-	-	-	-	-	-
TF	MA416	-	-	323048.4390N 0164821.1100W	024.468 (020.000)	3.638	-	-	-	-
RF	MA414	-	-	323233.9600N 0164703.4050W	-	2.084	R	MAC07	322905.4370N 0164247.8600W	5.000
TF	MA413	-	-	323702.6510N 0164157.7410W	048.371 (043.903)	6.205	-	-	-	-
TF	MA412	IF	-	324205.1230N 0163612.7530W	048.416 (043.948)	6.991	-	-	-	-
RF	MA408	FAP	-	324617.2640N 0164118.0750W	-	9.385	L	MAC08	324410.3410N 0163846.3850W	3.000
TF	RW23	MAPT	Y	324221.0289N 0164554.5412W	229.174 (224.706)	5.527	-	-	-	-
TF	MA407	-	-	324123.7530N 0164701.5045W	229.147 (224.679)	1.340	-	-	-	-
RF	MA406	-	-	323939.2330N 0164801.4550W	-	1.967	L	MAC05	323916.9370N 0164429.8820W	3.000
TF	MONEC	-	-	322722.9270N 0164949.3940W	191.553 (187.085)	12.341	-	-	-	-
HM	MONEC	-	-	322722.9270N 0164949.3940W	-	-	L	-	-	-

Waypoint Identifier	Altitude	Speed	RNP Value NM	Navigation Specification	Remarks
PILIM	+3000	230KT	0.3	RNP PARAPCH	-
MA410	+2000	-	0.3	RNP PARAPCH	-
MA408	@2000	-	0.3/0.2/0.1	RNP PARAPCH	-
MONEC	+3000	230KT	0.3	RNP PARAPCH	-
MA416	+2000	-	0.3	RNP PARAPCH	-
MA414	+2000	-	0.3	RNP PARAPCH	-
MA413	+2000	-	0.3	RNP PARAPCH	-
MA412	+2000	210KT	0.3	RNP PARAPCH	-
MA408	@2000	-	0.3/0.2/0.1	RNP PARAPCH	-
RW23	-	-	0.3/0.2/0.1	RNP PARAPCH	-
MA407	-	-	0.3/0.2/0.1	RNP PARAPCH	-
MA406	-	210KT	0.3/0.2/0.1	RNP PARAPCH	-
MONEC	+3000	-	0.3	RNP PARAPCH	-
MONEC	+3000	-	0.3	RNP PARAPCH	-

**RNAV Holding**

HLDG ID	INBD TRACK MAG (TRUE)	Turn Direction	MAX IAS (KT)	MAX/MNM HLDG ALT FL/FT(MSL)	TIME (MIN) or DIST OUBD	Controlling Unit
PILIM	226.468 (222.000)	R	230	FL100 / 3000FT	1 MIN	Madeira TWR
MONEC	024.468 (020.000)	L	230	FL100 / 3000FT	1 MIN	Madeira TWR