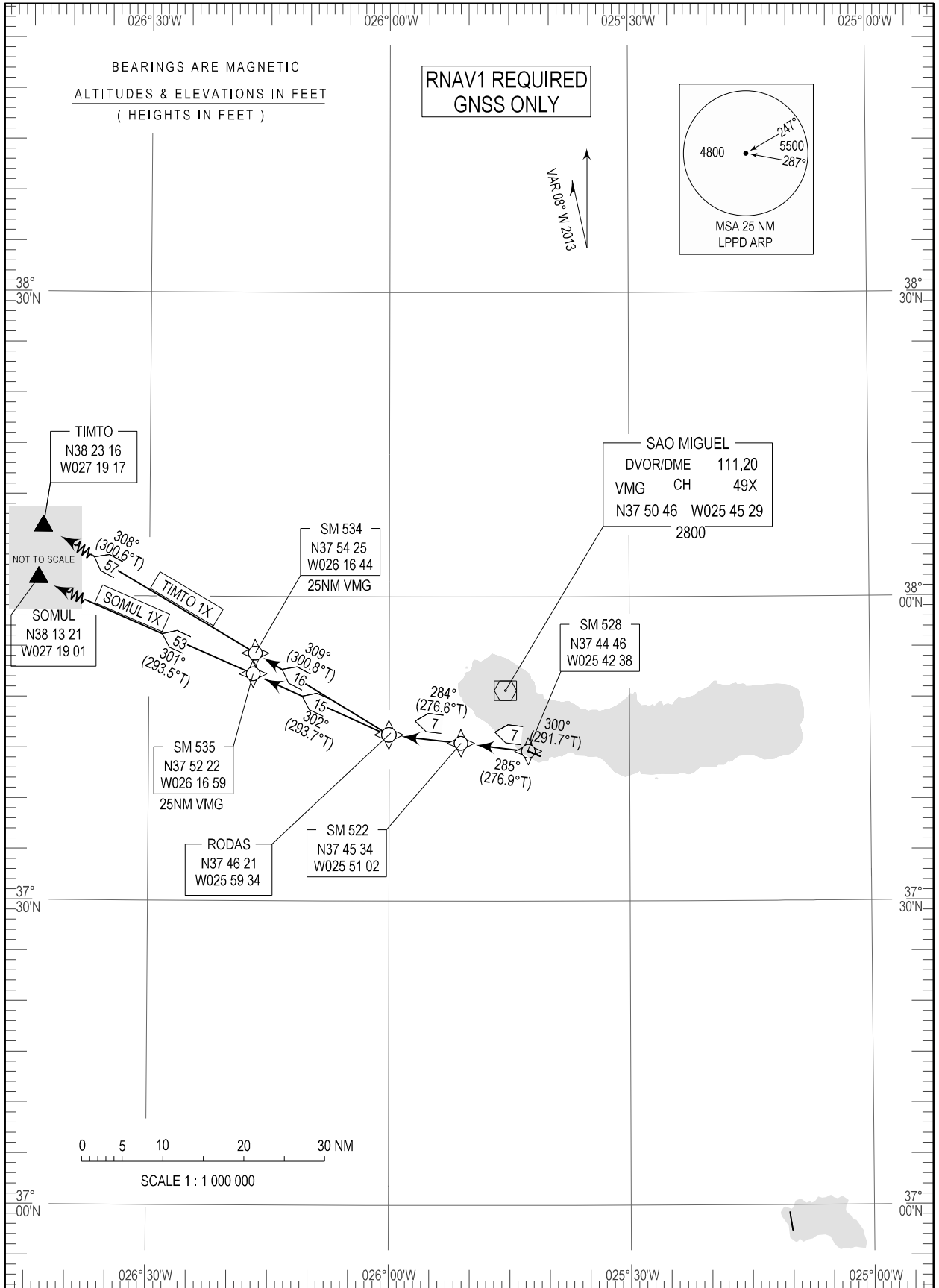


STANDARD DEPARTURE CHART -
INSTRUMENT (SID) - ICAO

TRANSITION ALTITUDE
6000

APP 119.400
TWR 118.300

PONTA DELGADA (LPPD)
RNAV Rwy 30
SOMUL 1X, TIMTO 1X



SID Procedure Coding Table

Ponta Delgada SID RNAV 1 RWY 30 - SOMUL 1X

Designator	Route	After Take-off		Remarks
		Climb to ALT/FL	Contact	
SOMUL1X	After take-off proceed to SM528. Turn left to SM522 – RODAS –SM535 - SOMUL.		P.Delgada APP FREQ 119.400 MHz	

Path Terminator	Waypoint			Course/Track MAG (True)	DIST NM	Turn Direction	Constraints		Navigation Specificatin	Remarks
	Identifier	Flyover	Coordinates				Level	Speed		
CF	SM528	-	374445.80N 0254238.24W	300 (291.7)	-	-	-	-	RNAV 1	
TF	SM522	-	374533.89N 0255102.25W	285 (276.9)	6.69	Left	-	-	RNAV 1	
TF	RODAS	-	374620.54N 0255934.24W	284 (276.6)	6.81	-	-	-	RNAV 1	
TF	SM535	-	375222.28N 0261659.50W	302 (293.7)	15.06	Right	-	-	RNAV 1	
TF	SOMUL	-	381321.44N 0271900.99W	301 (293.5)	53.29	-	-	-	RNAV 1	

SID Procedure Coding Table

Ponta Delgada SID RNAV 1 RWY 30 - TIMTO 1X

Designator	Route	After Take-off		Remarks
		Climb to ALT/FL	Contact	
TIMTO1X	After take-off proceed to SM528. Turn left to SM522 – RODAS- SM534 - TIMTO.		Ponta Delgada APP FREQ 119.400 MHz	

Path Terminator	Waypoint			Course/Track MAG (True)	DIST NM	Turn Direction	Constraints		Navigation Specificatin	Remarks
	Identifier	Flyover	Coordinates				Level	Speed		
CF	SM528	-	374445.80N 0254238.24W	300 (291.7)	-	-	-	-	RNAV 1	
TF	SM522	-	374533.89N 0255102.25W	285 (276.9)	6.69	Left	-	-	RNAV 1	
TF	RODAS	-	374620.54N 0255934.24W	284 (276.6)	6.81	-	-	-	RNAV 1	
TF	SM534	-	375425.10N 0261643.51W	309 (300.8)	15.80	Right	-	-	RNAV 1	
TF	TIMTO	-	382316.27N 0271917.12W	308 (300.6)	57.15	-	-	-	RNAV 1	