

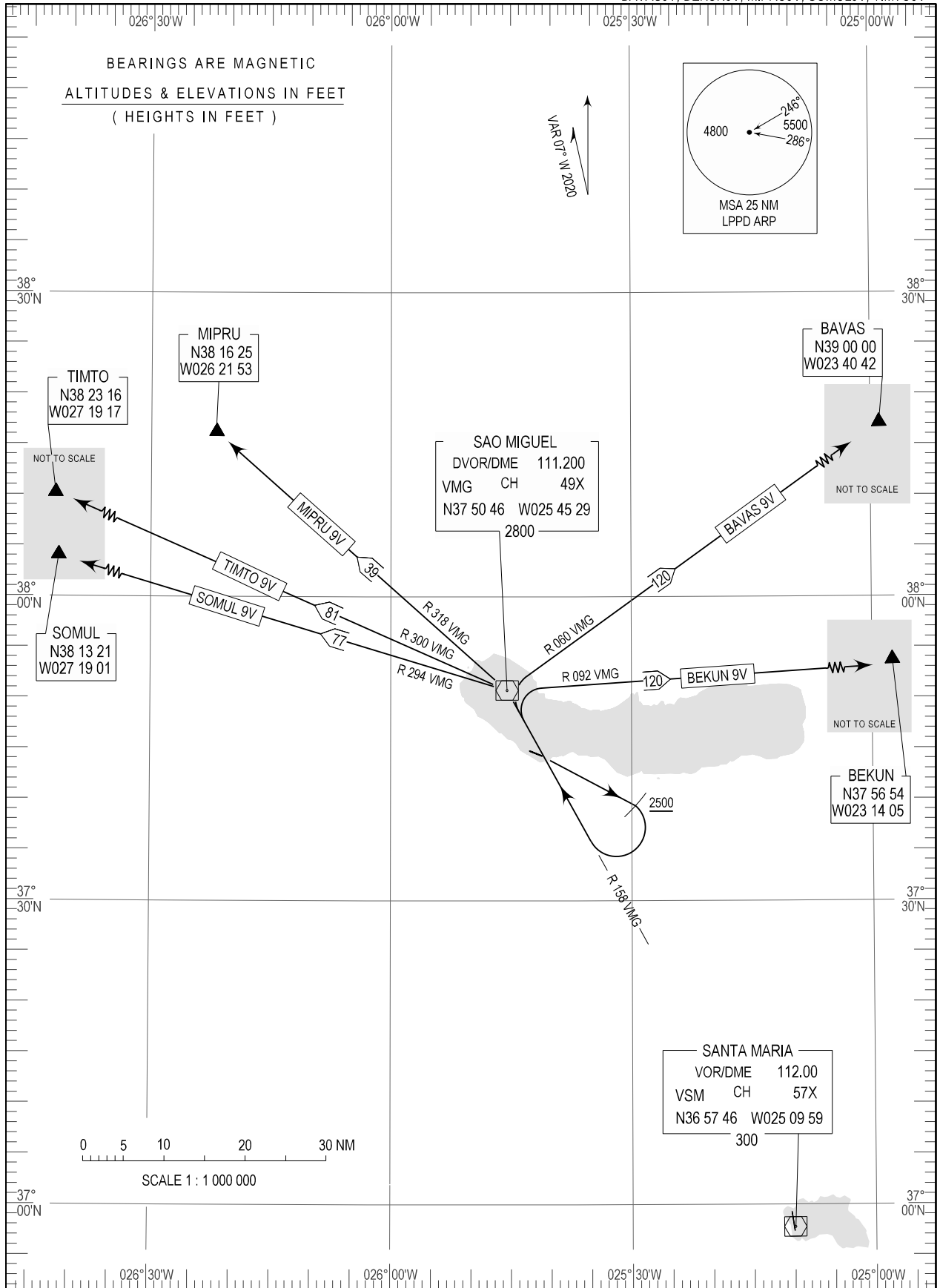
STANDARD DEPARTURE CHART -
INSTRUMENT (SID) - ICAO

TRANSITION ALTITUDE
6000

APP 119.400
TWR 118.300

PONTA DELGADA
João Paulo II (LPPD)
RWY 12

BAVAS9V, BEKUN9V, MIPRU9V, SOMUL9V, TIMTO9V



MAG VAR updated.

Ponta Delgada STANDARD INSTRUMENT DEPARTURE (SID) RUNWAY 12		
Designator	Route	Remarks
BAVAS9V	Climb straight ahead to 2500FT, upon reaching turn right to VMG DVOR/DME on RDL158 VMG DVOR/DME; at VMG DVOR/DME turn right to proceed on RDL060 to BAVAS.	Note: Cross RDL158 DME8 VMG DVOR/DME at or above 4800FT climbing.
BEKUN9V	Climb straight ahead to 2500FT, upon reaching turn right to VMG DVOR/DME on RDL158 VMG DVOR/DME; at VMG DVOR/DME turn right to proceed on RDL092 to BEKUN.	Note: Cross RDL158 DME8 VMG DVOR/DME at or above 4800FT climbing.
MIPRU9V	Climb straight ahead to 2500FT, upon reaching turn right to VMG DVOR/DME on RDL158 VMG DVOR/DME; at VMG DVOR/DME turn left to proceed on RDL318 to MIPRU.	Note: Cross RDL158 DME8 VMG DVOR/DME at or above 4800FT climbing.
SOMUL9V	Climb straight ahead to 2500FT, upon reaching turn right to VMG DVOR/DME on RDL158 VMG DVOR/DME; at VMG DVOR/DME turn left to proceed on RDL294 to SOMUL.	Note: Cross RDL158 DME8 VMG DVOR/DME at or above 4800FT climbing.
TIMTO9V	Climb straight ahead to 2500FT, upon reaching turn right to VMG DVOR/DME on RDL158 VMG DVOR/DME; at VMG DVOR/DME turn left to proceed on RDL300 to TIMTO.	Note: Cross RDL158 DME8 VMG DVOR/DME at or above 4800FT climbing.