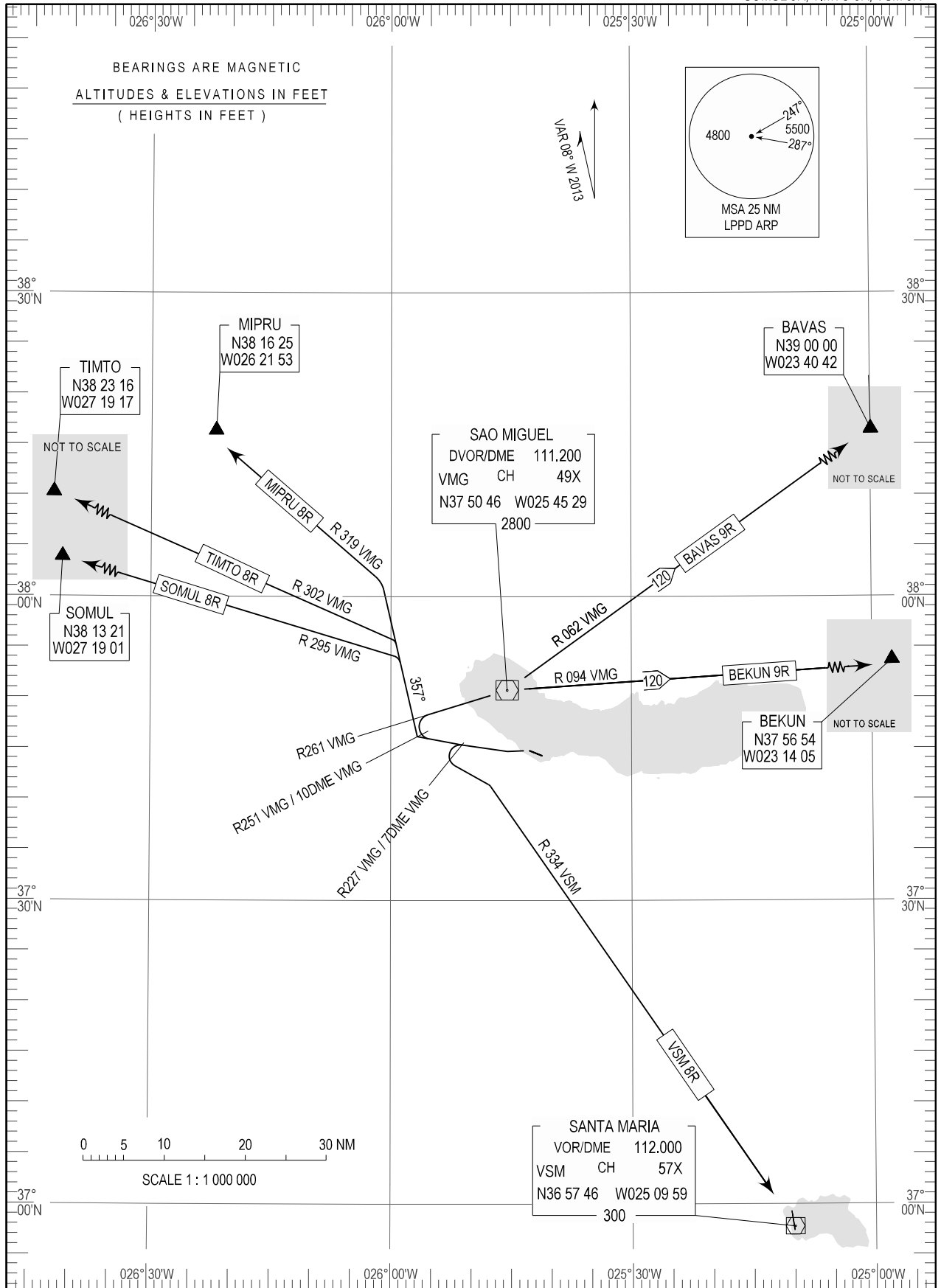


STANDARD DEPARTURE CHART - INSTRUMENT (SID) - ICAO

TRANSITION ALTITUDE	APP	119.400
6000	TWR	118.300

PONTA DELGADA (LPPD)  
RWY 30  
BAVAS 9R, BEKUN 9R, MIPRU 8R  
SOMUL 8R, TIMTO 8R, VSM 8R



SID numbering changed.

<b>Ponta Delgada STANDARD INSTRUMENT DEPARTURE (SID) RUNWAY 30</b>		
<b>Designator</b>	<b>Route</b>	<b>Remarks</b>
BAVAS9R	After departure turn left 15°. At 3000ft climbing turn right to VMG DVOR/DME on RDL261 VMG DVOR/DME. Proceed on RDL062 VMG DVOR/DME to BAVAS.	Note: Cross RDL261 DME5 VMG DVOR/DME at or above 4800ft.
BEKUN9R	After departure turn left 15°. At 3000ft climbing turn right to VMG DVOR/DME on RDL261 VMG DVOR/DME. Proceed on RDL094 VMG DVOR/DME to BEKUN.	Note: Cross RDL261 DME5 VMG DVOR/DME at or above 4800ft.
MIPRU8R	After departure turn left 15° to intercept RDL251 DME10 VMG DVOR/DME then turn right to track 357 to intercept RDL319 VMG DVOR/DME to MIPRU.	Note: After turning right to track 357 keep beyond DME5 VMG DVOR/DME.
SOMUL8R	After departure turn left 15° to intercept RDL251 DME10 VMG DVOR/DME then turn right to track 357 to intercept RDL295 VMG DVOR/DME to SOMUL.	Note: After turning right to track 357 keep beyond DME5 VMG DVOR/DME.
TIMTO8R	After departure turn left 15° to intercept RDL251 DME10 VMG DVOR/DME then turn right to track 357 to intercept RDL302 VMG DVOR/DME to TIMTO.	Note: After turning right to track 357 keep beyond DME5 VMG DVOR/DME.
VSM8R	After departure turn left 15° to intercept RDL227 DME7 VMG DVOR/DME. At 1500ft or above turn left to intercept RDL334 VSM DVOR/DME to VSM DVOR/DME.	