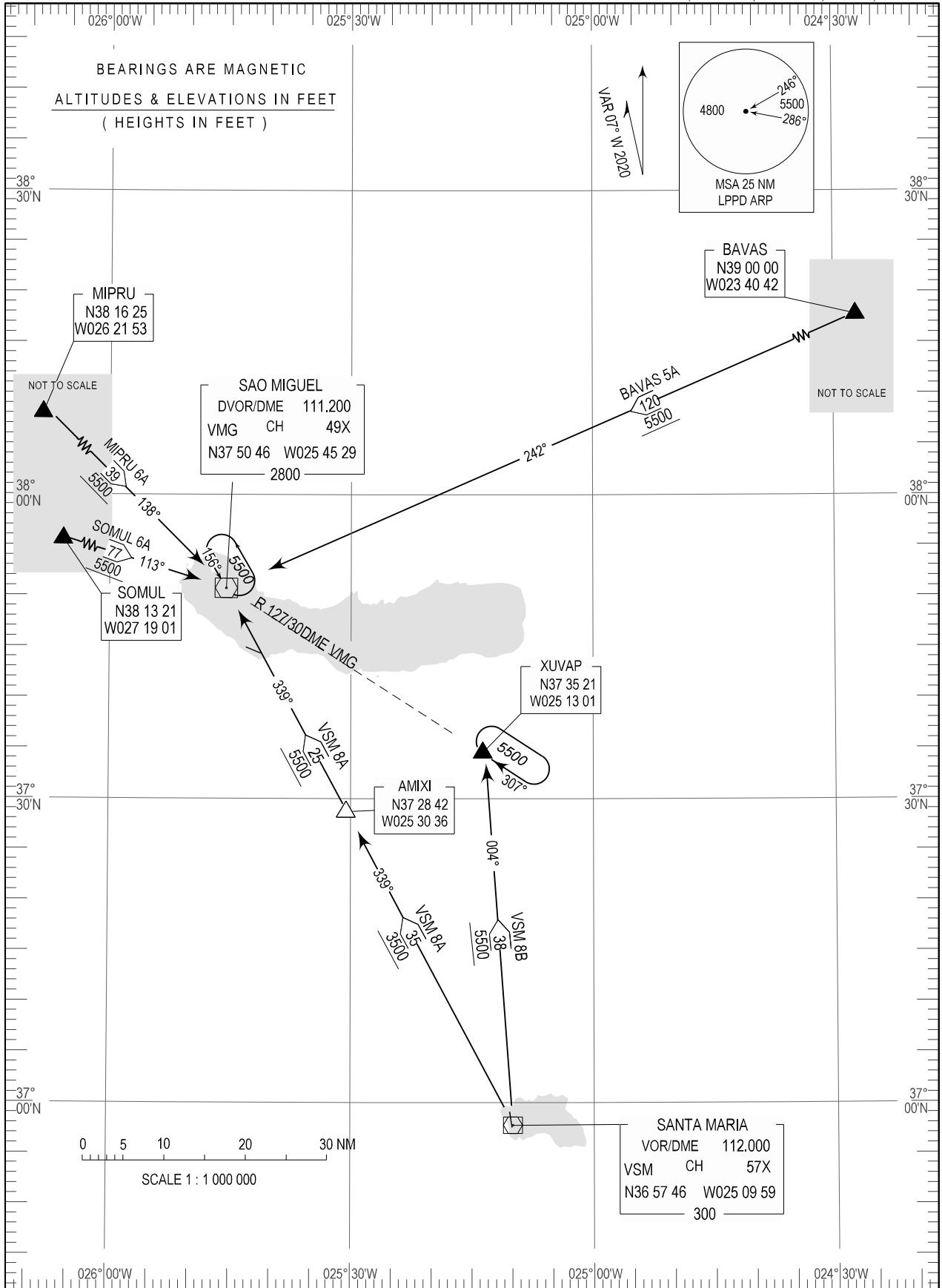


STANDARD ARRIVAL CHART -
INSTRUMENT (STAR) - ICAO

TRANSITION ALTITUDE	APP 119.400
6000	TWR 118.300

PONTA DELGADA
João Paulo II (LPPD)
RWY 12/30
BAVAS 5A, MIPRU 6A, SOMUL 6A, VSM 8A, VSM 8B



MAG VAR updated.

STANDARD INSTRUMENT ARRIVAL (STAR) RWY 12/30

RUNWAY 10-28					
Designator	Identification Significant Points	MAG Track	DIST NM	Minimum safe ALT (FT)	Remarks
BAVAS 5A	▲ BAVAS	242	120	5500	Note: Clearance limit VMG holding.
	▲ VMG				
MIPRU 6A	▲ MIPRU	138	39	5500	
	▲ VMG				
SOMUL 6A	▲ SOMUL	113	77	5500	
	▲ VMG				
VSM 8A	▲ VSM	339	35	3500	
	△ AMIXI	339	25	5500	
	▲ VMG				
VSM 8B	▲ VSM	004	38	5500	Note 1: Clearance limit XUVAP holding. Note 2: Alternative to VSM 7A.
	▲ XUVAP				