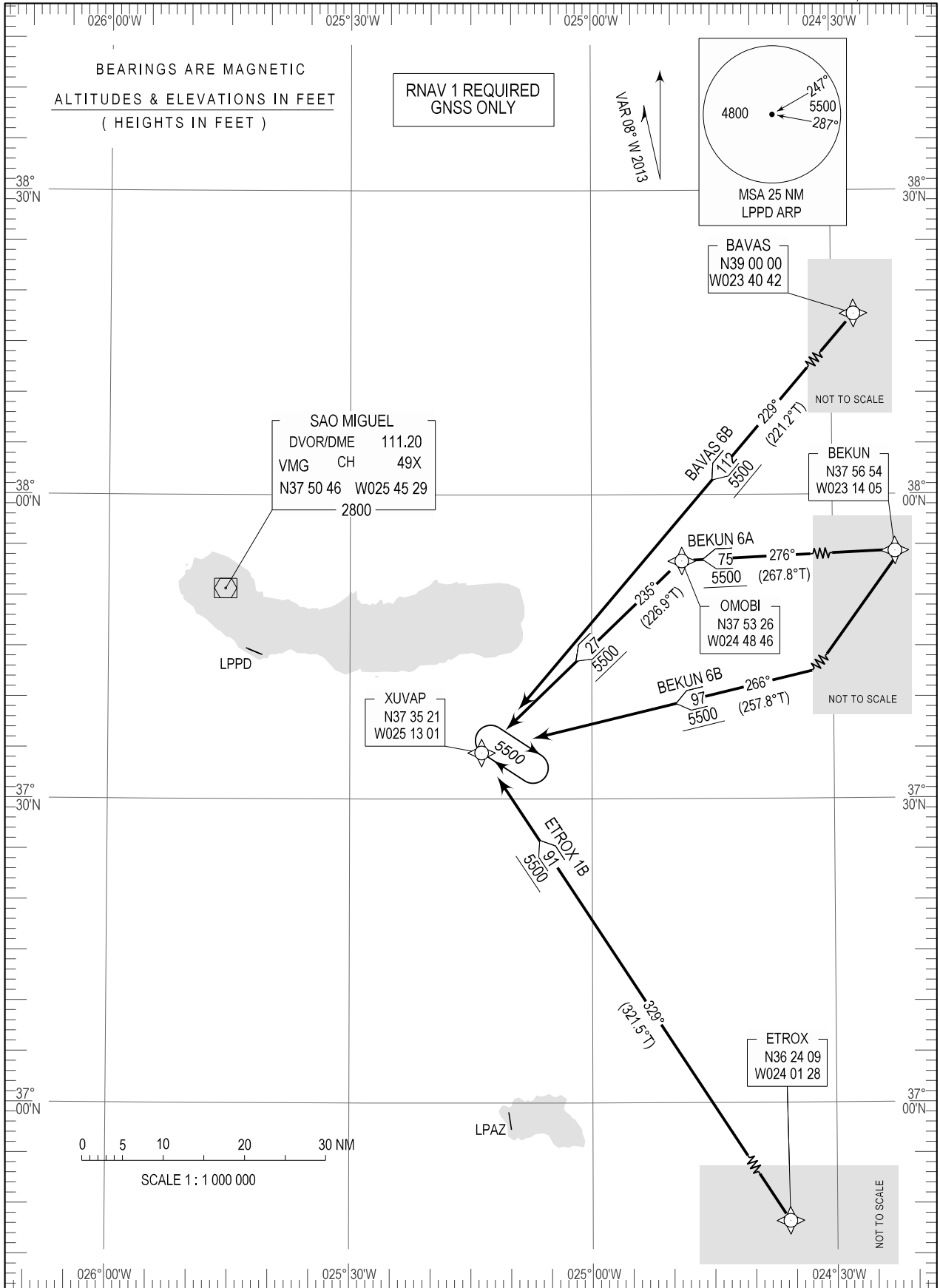


STANDARD ARRIVAL CHART -  
INSTRUMENT (STAR) - ICAO

TRANSITION ALTITUDE 6000  
APP 119.400  
TWR 118.300

PONTA DELGADA (LPPD)  
RNAV Rwy 30  
BAVAS 6B, BEKUN 6A  
BEKUN 6B, ETROX 1B



Significant point symbol changed to WPT.

Ponta Delgada STAR RNAV RWY 30

Procedure Coding Table  
STAR RNAV 1 BAVAS 6B

Path Terminator	Waypoint			Course/Track MAG(True)	DISTNM	Turn Direction	Constraints		Navigation Specification	Remarks
	Identifier	Flyover	Coordinates				Level	Speed		
IF	BAVAS	-	390000.00N 0234042.07W	-	-	-	+5500 FT	-	RNAV 1	Clearancelimit:Holding XUVAP.
TF	XUVAP	-	373521.17N 0251300.95W	229 (221.2)	111.49	-	+5500 FT	-	RNAV 1	

Procedure Coding Table  
STAR RNAV 1 BEKUN 6A

Path Terminator	Waypoint			Course/Track MAG(True)	DISTNM	Turn Direction	Constraints		Navigation Specification	Remarks
	Identifier	Flyover	Coordinates				Level	Speed		
IF	BEKUN	-	375653.77N 0231404.64W	-	-	-	+5500 FT	-	RNAV 1	Clearancelimit:Holding XUVAP.
TF	OMOBI	-	375326.46N 0244845.58W	276 (267.8)	75.00	-	+5500 FT	-	RNAV 1	
TF	XUVAP	-	373521.17N 0251300.95W	235 (226.9)	26.39	Left	+5500 FT	-	RNAV 1	

Procedure Coding Table  
STAR RNAV 1 BEKUN 6B

Path Terminator	Waypoint			Course/Track MAG(True)	DISTNM	Turn Direction	Constraints		Navigation Specification	Remarks
	Identifier	Flyover	Coordinates				Level	Speed		
IF	BEKUN	-	375653.77N 0231404.64W	-	-	-	+5500 FT	-	RNAV 1	Clearancelimit:Holding XUVAP.
TF	XUVAP	-	373521.17N 0251300.95W	266 (257.8)	96.73	-	+5500 FT	-	RNAV 1	

Procedure Coding Table  
STAR RNAV 1 ETROX 1B

Path Terminator	Waypoint			Course/Track MAG (True)	DISTNM	Turn Direction	Constraints		Navigation Specification	Remarks
	Identifier	Flyover	Coordinates				Level	Speed		
IF	ETROX	-	362409.22N 0240128.49W	-	-	-	+5500 FT	-	RNAV 1	Clearancelimit: Holding XUVAP
TF	XUVAP	-	373521.17N 0251300.95W	329 (321.5)	91.33	-	+5500 FT	-	RNAV 1	