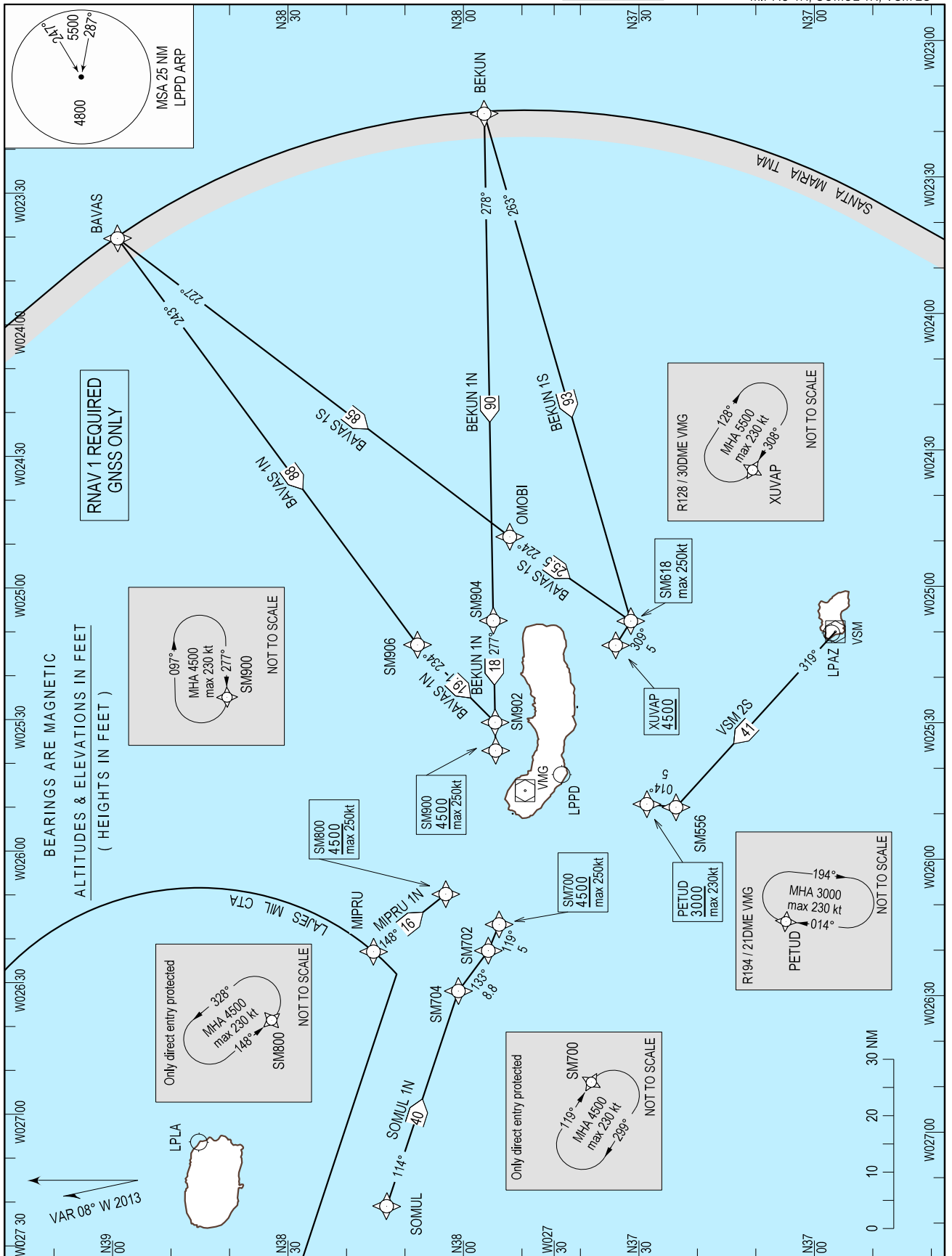


STANDARD ARRIVAL CHART -  
INSTRUMENT (STAR) - ICAO

TRANSITION ALTITUDE  
6000

TWR 118.300  
APP 119.400  
ACC 132.150

PONTA DELGADA (LPPD)  
RNAV RWY12/30  
BAVAS 1N, BAVAS 1S, BEKUN 1N, BEKUN 1S  
MIPRU 1N, SOMUL 1N, VSM 2S



MHA PETUD changed, missed APCH and RCF updated.

STAR Procedure Coding Table  
RNAV 1 - GNSS ONLY

PONTA DELGADA STAR RNAV1 BEKUN 1N

Path Terminator	Waypoint			Course/Track MAG (True)	Dist NM	Turn Direction	Constraints		Navigation Specificatin
	Identifier	Flyover	Coordinates				Level	Speed	
IF	BEKUN	-	375654.00N 0231405.00W	-	-	-	-	-	RNAV 1
TF	SM904	-	375617.68N 0250731.26W	278 (270.2)	89.73	-	-	-	RNAV 1
TF	SM902	-	375557.23N 0253016.17W	277 (269.0)	18.00	-	-	-	RNAV 1
TF	SM900	-	375550.77N 0253635.27W	277 (268.8)	5.00	-	+4500FT	250KT	RNAV 1

PONTA DELGADA STAR RNAV1 BAVAS 1N

Path Terminator	Waypoint			Course/Track MAG (True)	Dist NM	Turn Direction	Constraints		Navigation Specificatin
	Identifier	Flyover	Coordinates				Level	Speed	
IF	BAVAS	-	390000.00N 0234042.00W	-	-	-	-	-	RNAV 1
TF	SM906	-	380915.50N 0251255.33W	243 (235.5)	88.31	-	-	-	RNAV 1
TF	SM902	-	375557.23N 0253016.17W	234 (226.0)	19.09	Left	-	-	RNAV 1
TF	SM900	-	375550.77N 0253635.27W	277 (268.8)	5.00	Right	+4500FT	250KT	RNAV 1

PONTA DELGADA STAR RNAV1 MIPRU 1N

Path Terminator	Waypoint			Course/Track MAG (True)	Dist NM	Turn Direction	Constraints		Navigation Specificatin
	Identifier	Flyover	Coordinates				Level	Speed	
IF	MIPRU	-	381625.00N 0262153.00W	-	-	-	-	-	RNAV 1
TF	SM800	-	380411.09N 0260847.05W	148 (139.7)	16.00	-	+4500FT	250KT	RNAV 1

PONTA DELGADA STAR RNAV1 SOMUL 1N

Path Terminator	Waypoint			Course/Track MAG (True)	Dist NM	Turn Direction	Constraints		Navigation Specificatin
	Identifier	Flyover	Coordinates				Level	Speed	
IF	SOMUL	-	381321.00N 0271901.00W	-	-	-	-	-	RNAV 1
TF	SM704	-	380148.57N 0263028.49W	114 (106.5)	40.00	-	-	-	RNAV 1
TF	SM702	-	375647.29N 0262121.36W	133 (124.8)	8.78	Right	-	-	RNAV 1
TF	SM700	-	375459.80N 0261527.28W	119 (110.9)	5.00	Left	+4500FT	250KT	RNAV 1

PONTA DELGADA STAR RNAV1 BEKUN 1S

Path Terminator	Waypoint			Course/Track MAG (True)	Dist NM	Turn Direction	Constraints		Navigation Specificatin
	Identifier	Flyover	Coordinates				Level	Speed	
IF	BEKUN	-	375654.00N 0231405.00W	-	-	-	-	-	RNAV 1
TF	SM618	-	373246.35N 0250737.60W	263 (255.6)	93.22	-	-	250KT	RNAV 1
TF	XUVAP	-	373521.17N 0251300.95W	309 (301.1)	5.00	Right	+4500FT	-	RNAV 1

PONTA DELGADA STAR RNAV1 BAVAS 1S

Path Terminator	Waypoint			Course/Track MAG (True)	Dist NM	Turn Direction	Constraints		Navigation Specificatin
	Identifier	Flyover	Coordinates				Level	Speed	
IF	BAVAS	-	390000.00N 0234042.00W	-	-	-	-	-	RNAV 1
TF	OMOBI	-	375326.00N 0244846.00W	227 (219.2)	85.33	-	-	-	RNAV 1
TF	SM618	-	373246.35N 0250737.60W	224 (216.0)	25.49	-	-	250KT	RNAV 1
TF	XUVAP	-	373521.17N 0251300.95W	309 (301.1)	5.00	Right	+4500FT	-	RNAV 1

PONTA DELGADA STAR RNAV1 VSM 2S

Path Terminator	Waypoint			Course/Track MAG (True)	Dist NM	Turn Direction	Constraints		Navigation Specificatin
	Identifier	Flyover	Coordinates				Level	Speed	
IF	VSM	-	365746.50N 0250959.00W	-	-	-	-	-	RNAV 1
TF	SM556	-	372456.08N 0254859.26W	319 (311.2)	41.32	-	-	-	RNAV 1
TF	PETUD	-	372954.80N 0254819.90W	014 (006.0)	5.00	Right	+3000FT	230KT	RNAV 1