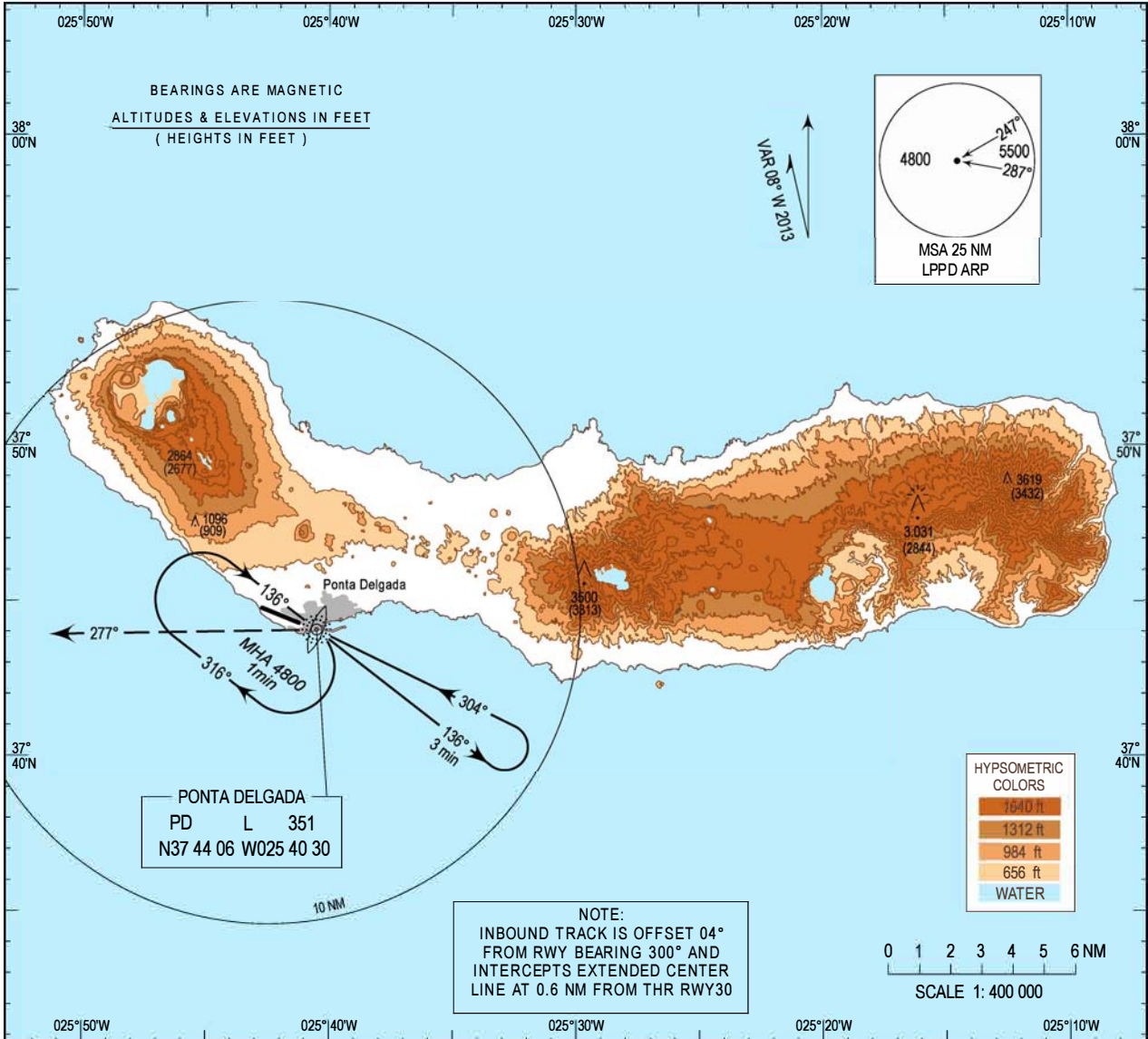


INSTRUMENT  
APPROACH  
CHART - ICAO

AD ELEV 259 ft  
HEIGHTS RELATED  
THR RWY 30 - ELEV 187 ft

ATIS 123.900  
APP 119.400  
TWR 118.300

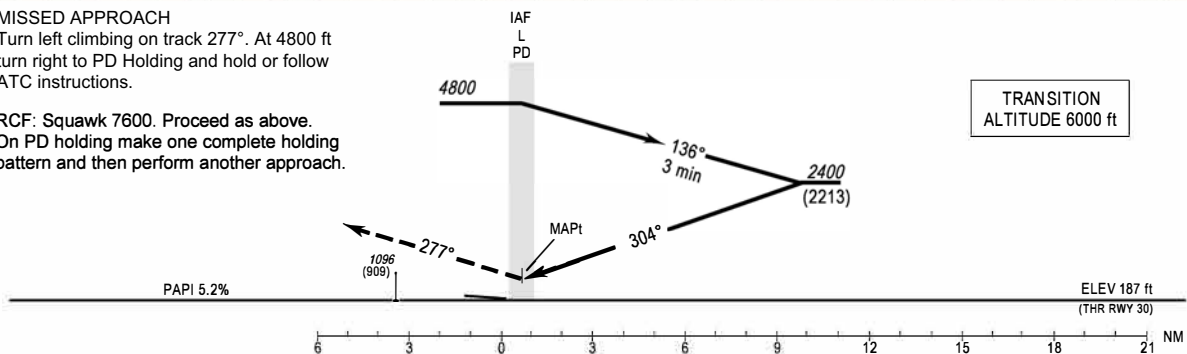
PONTA DELGADA/LPPD  
LOCATOR  
RWY 30  
CAT A-B



MISSED APPROACH

Turn left climbing on track 277°. At 4800 ft turn right to PD Holding and hold or follow ATC instructions.

RCF: Squawk 7600. Proceed as above. On PD holding make one complete holding pattern and then perform another approach.



CAT	STRAIGHT-IN		CIRCLING RWY30	
	DA/H	OCH	NORTH MDA/H	SOUTH MDA/H
A	700 (513)	513	NOT AUTHORIZED	700 (441)
B	720 (533)	533	NOT AUTHORIZED	760 (501)

Missed APCH and RCF updated.

THIS PAGE INTENTIONALLY LEFT BLANK