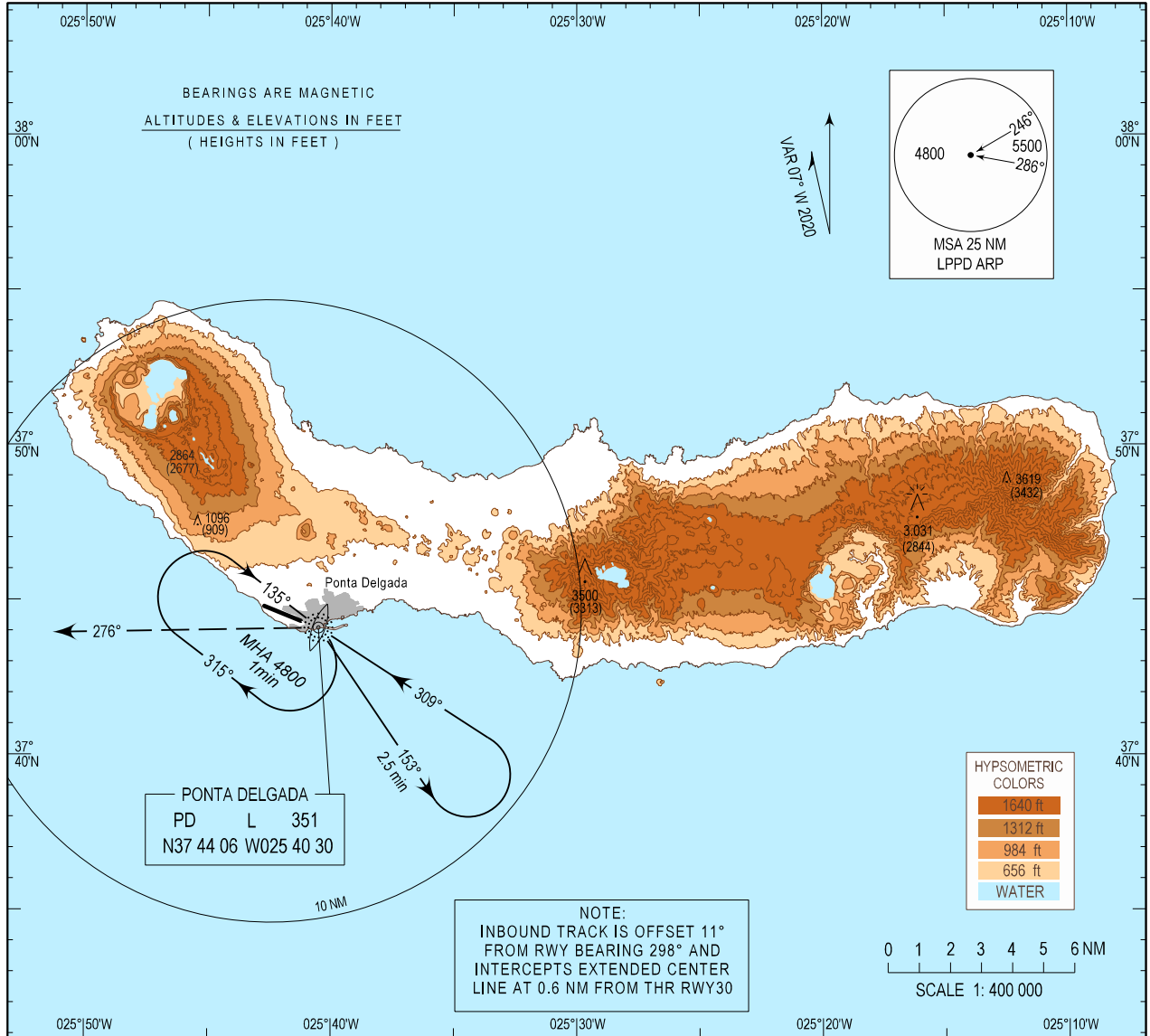


INSTRUMENT  
APPROACH  
CHART - ICAO

AD ELEV 259 ft  
HEIGHTS RELATED  
THR RWY 30 - ELEV 187 ft

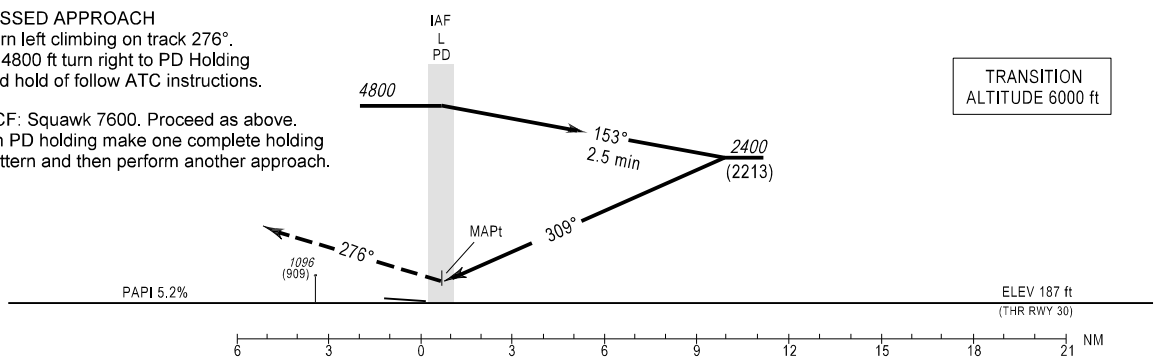
ATIS 123.900  
APP 119.400  
TWR 118.300

PONTA DELGADA, João Paulo II (LPPD)  
LOCATOR RWY 30  
CAT C-D



**MISSED APPROACH**  
Turn left climbing on track 276°.  
At 4800 ft turn right to PD Holding  
and hold of follow ATC instructions.

RCF: Squawk 7600. Proceed as above.  
On PD holding make one complete holding  
pattern and then perform another approach.



CAT	STRAIGHT-IN		CIRCLING RWY30	
	DA/H	OCH	NORTH MDA/H	SOUTH MDA/H
C	760 (573)	573	NOT AUTHORIZED	850 (591)
D	760 (573)	573	NOT AUTHORIZED	950 (691)

MAG VAR updated.

THIS PAGE INTENTIONALLY LEFT BLANK