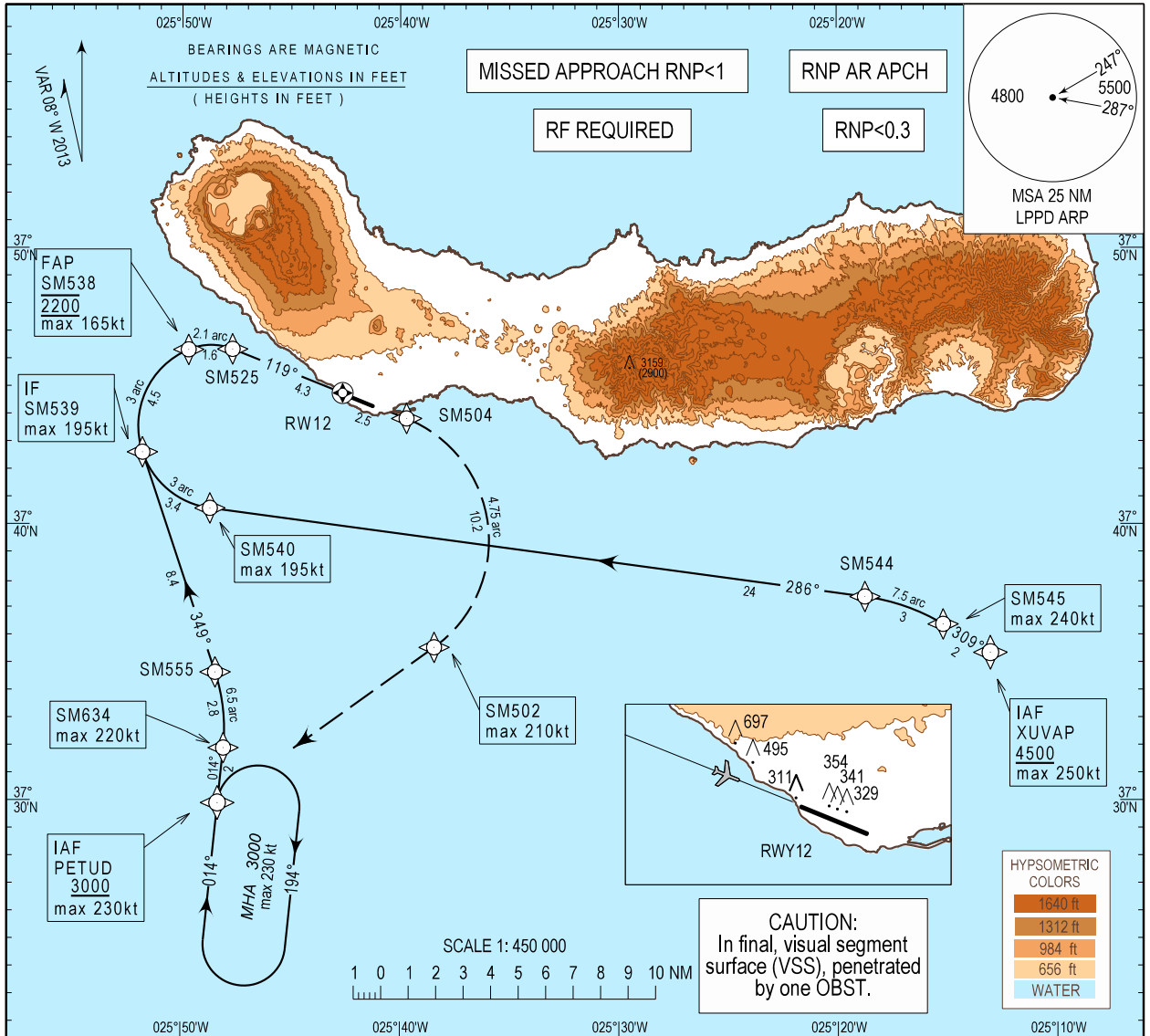


INSTRUMENT  
APPROACH  
CHART - ICAO

AD ELEV 259 ft  
HEIGHTS RELATED  
THR RWY 12 - ELEV 259 ft

ATIS 123.900  
APP 119.400  
TWR 118.300

PONTA DELGADA / LPPD  
RNP X RWY12 (AR)

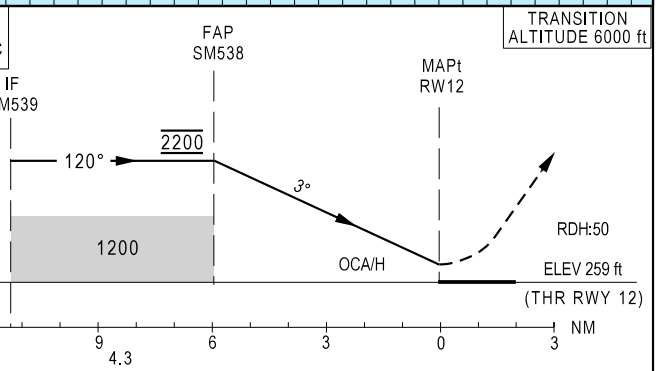


**MISSED APPROACH**  
Climb to 3000 ft via SM504-SM502 to PETUD.  
At PETUD hold or start a new approach to RWY12 via PETUD or follow ATC instructions.

Note: RNP 0.3 from SM504 until PETUD

RCF: Squawk 7600. Proceed as above.  
On PETUD make one complete holding pattern at 3000 ft and then proceed to perform a new approach via PETUD to RWY12.

BARO-VNAV MINIMUM  
TEMPERATURE : +3.0°C



	CAT A		CAT B		CAT C		CAT D	
	DA(H)	OCH	DA(H)	OCH	DA(H)	OCH	DA(H)	OCH
① RNP 0.3	830(571)	567	840(581)	580	850(591)	588	860(601)	598
② RNP 0.2	630(371)	366	640(381)	378	650(381)	386	660(401)	396
③ RNP 0.1	560(301)	240	560(301)	257	560(301)	265	560(301)	275

- ① RNP 0.3 is required until SM504
- ② RNP 0.2 is required until SM504
- ③ RNP 0.1 is required until SM504

MHA PETUD changed, missed APCH and RCF updated.

Instrument Approach Procedure Coding Table															
LPPD RNP X RWY12 (AR)															
Path Terminator	Waypoint				Course/Track MAG (True)	Dist NM	Turn Direction	ARC Centre Waypoint		ARC Radius NM	Altitude	Speed	RNP Value NM	Navigation Specification	Remarks
	Ident	Type	Flyover	Coordinates				Identifier	Coordinates						
IF	XUVAP	IAF		373521.17N 0251300.95W							+4500FT	250KT	0.3	RNP AR APCH	
TF	SM545			373623.03N 0251510.39W	309 (301.0)	2.00						240KT	0.3	RNP AR APCH	
RF	SM544			373723.01N 0251844.60W		3.03	L	SMC21	372956.65N 0252001.45W	7.50			0.3	RNP AR APCH	
TF	SM540			374035.19N 0254842.12W	286 (277.8)	24.01	L					195KT	0.3	RNP AR APCH	
RF	SM539	IF		374236.72N 0255147.63W		3.35	R	SMC04	374333.86N 0254812.48W	3.00			0.3	RNP AR APCH	
IF	PETUD	IAF		372954.80N 0254819.90W							+3000FT	230KT	0.3	RNP AR APCH	
TF	SM634			373154.29N 0254804.13W	014 (006.0)	2.00						220KT	0.3	RNP AR APCH	
RF	SM555			373438.78N 0254826.70W		2.78	L	SMC18	373234.84N 0255611.82W	6.50			0.3	RNP AR APCH	
TF	SM539	IF		374236.72N 0255147.63W	349 (341.5)	8.39	L					195KT	0.3	RNP AR APCH	
RF	SM538	FAP		374619.65N 0254941.43W		4.47	R	SMC04	374333.86N 0254812.48W	3.00	@2200FT	165KT	0.3/0.2/0.1	RNP AR APCH	
RF	SM525			374620.90N 0254740.73W		1.64	R	SMC17	374423.60N 0254839.15W	2.10		-	0.3/0.2/0.1	RNP AR APCH	
TF	RW12	MAPT	Y	374445.80N 0254238.24W	119 (111.6)	4.30						-	0.3/0.2/0.1	RNP AR APCH	
TF	SM504			374350.41N 0253942.48W	120 (111.6)	2.50						-	0.3/0.2/0.1	RNP AR APCH	
RF	SM502			373533.08N 0253826.32W		10.18	R	SMC06	373925.20N 0254154.95W	4.75		210KT	0.3	RNP AR APCH	
TF	PETUD			372954.80N 0254819.90W	242 (234.5)	9.68					+3000FT	230KT	0.3	RNP AR APCH	
HM	PETUD			372954.80N 0254819.90W			R				+3000FT	230KT	NA	RNP AR APCH	