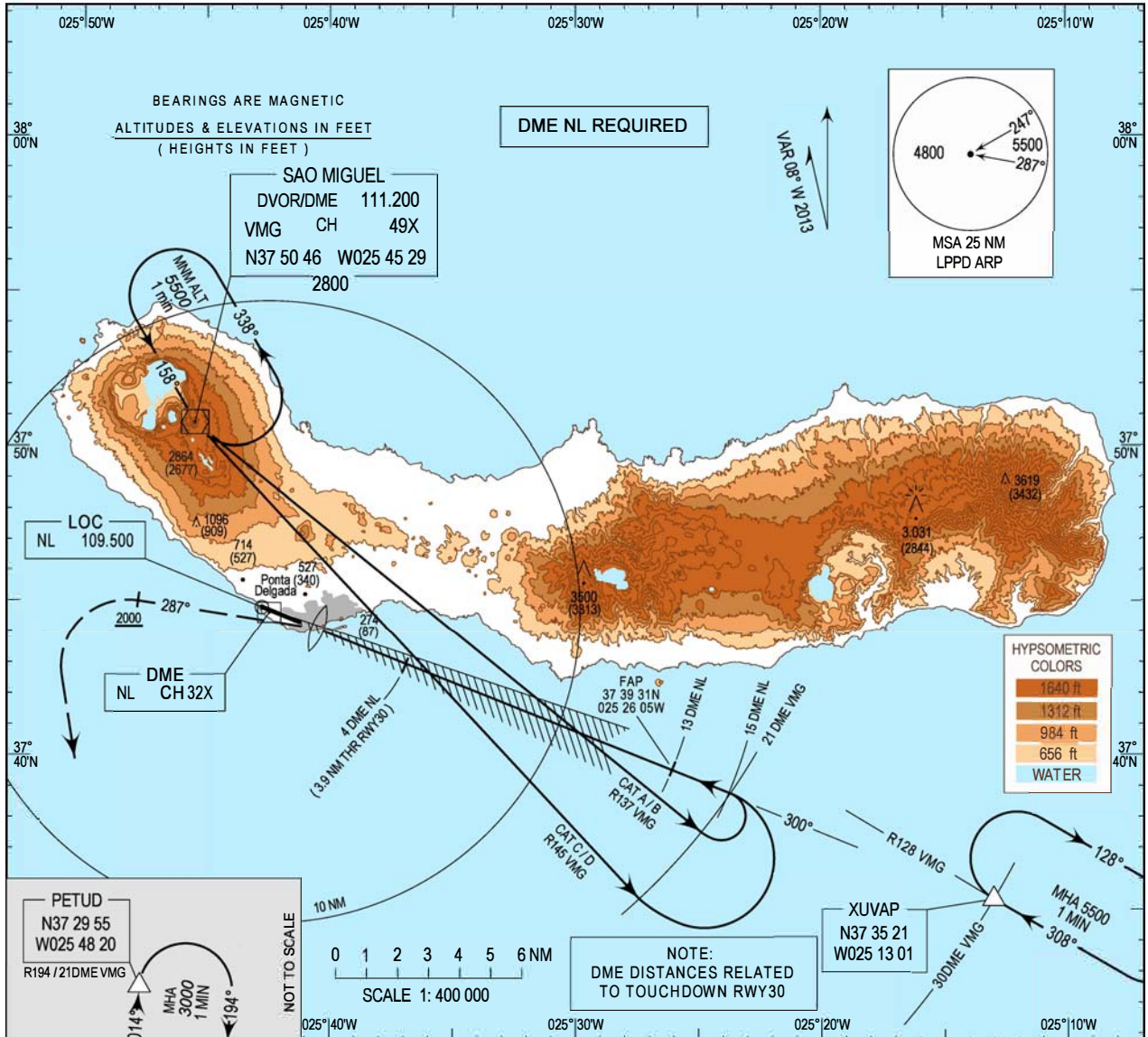


INSTRUMENT  
APPROACH  
CHART - ICAO

AD ELEV 259 ft  
HEIGHTS RELATED  
THR RWY 30 - ELEV 187 ft

ATIS 123.900  
APP 119.400  
TWR 118.300

PONTA DELGADA/LPPD  
ILS-Y  
RWY 30

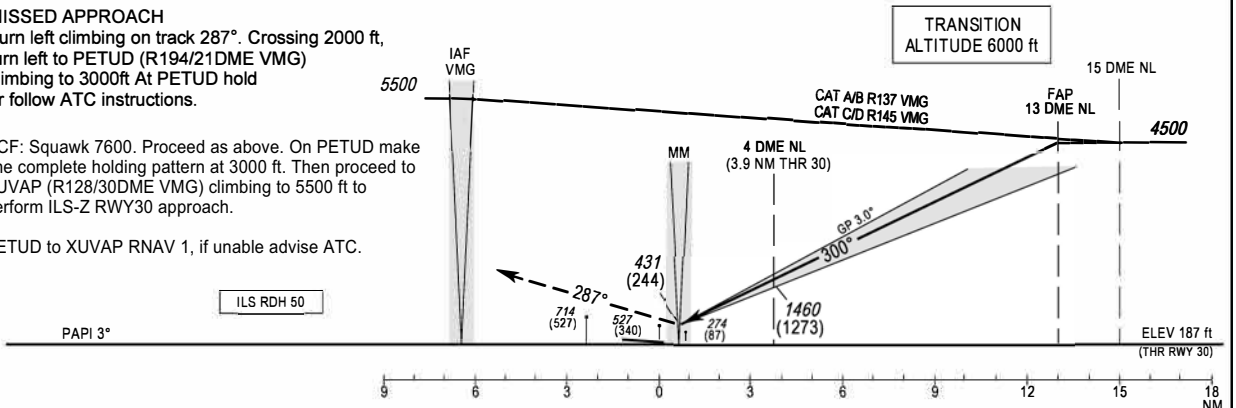


**MISSED APPROACH**

Turn left climbing on track 287°. Crossing 2000 ft, turn left to PETUD (R194/21DME VMG) climbing to 3000ft At PETUD hold or follow ATC instructions.

RCF: Squawk 7600. Proceed as above. On PETUD make one complete holding pattern at 3000 ft. Then proceed to XUVAP (R128/30DME VMG) climbing to 5500 ft to perform ILS-Z RWY30 approach.

PETUD to XUVAP RNAV 1, if unable advise ATC.



CAT	ILS CAT I		CIRCLING RWY30	
	DA/H	OCH	NORTH MDA/H	SOUTH MDA/H
A	410 (223)	221	NOT AUTHORIZED	660 (401)
B	420 (233)	231		760 (501)
C	430 (243)	241		850 (591)
D	440 (253)	251		950 (691)

MHA PETUD changed, missed APCH and RCF updated.

THIS PAGE INTENTIONALLY LEFT BLANK