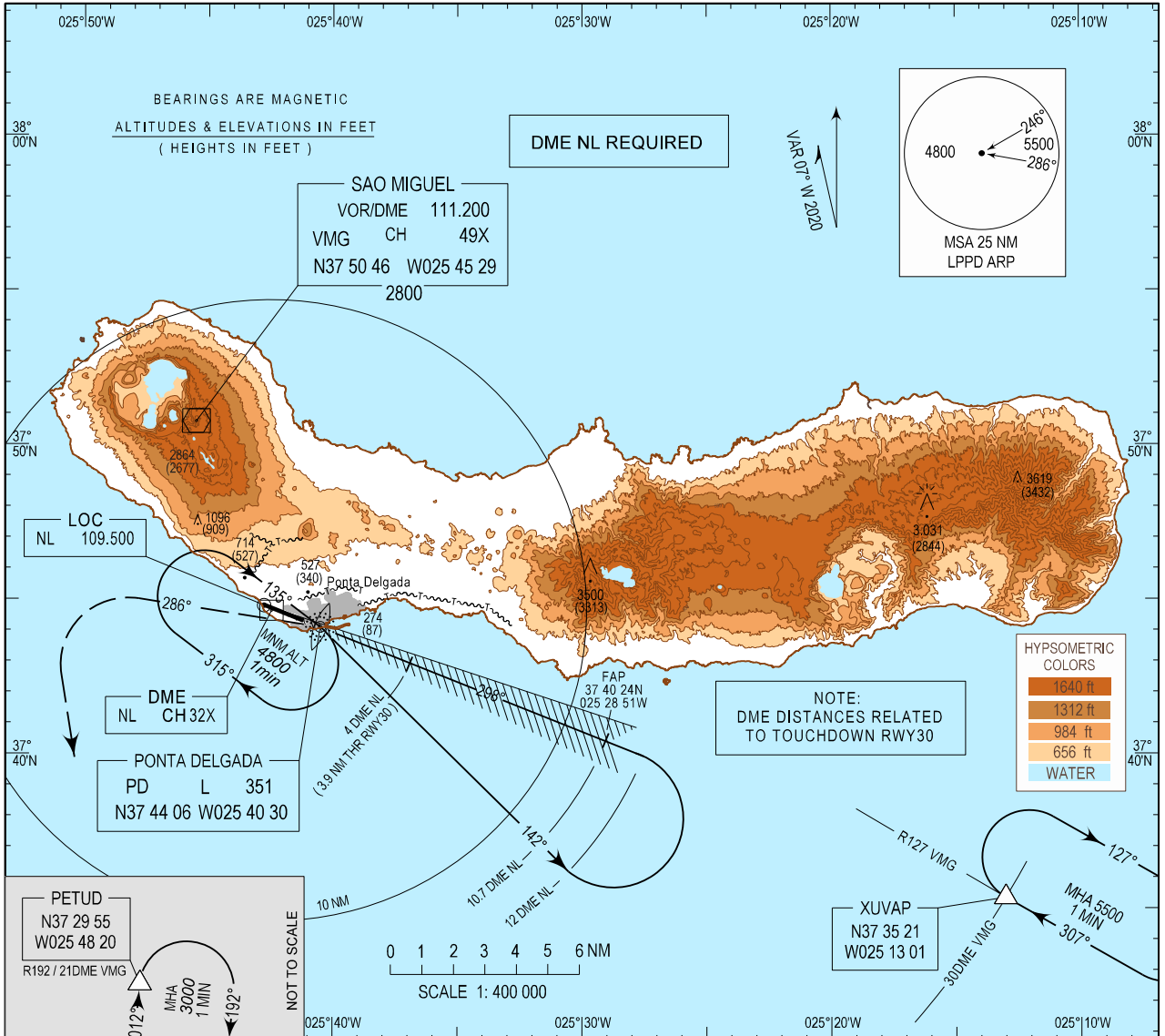


INSTRUMENT  
APPROACH  
CHART - ICAO

AD ELEV 259 ft  
HEIGHTS RELATED  
THR RWY 30 - ELEV 187 ft

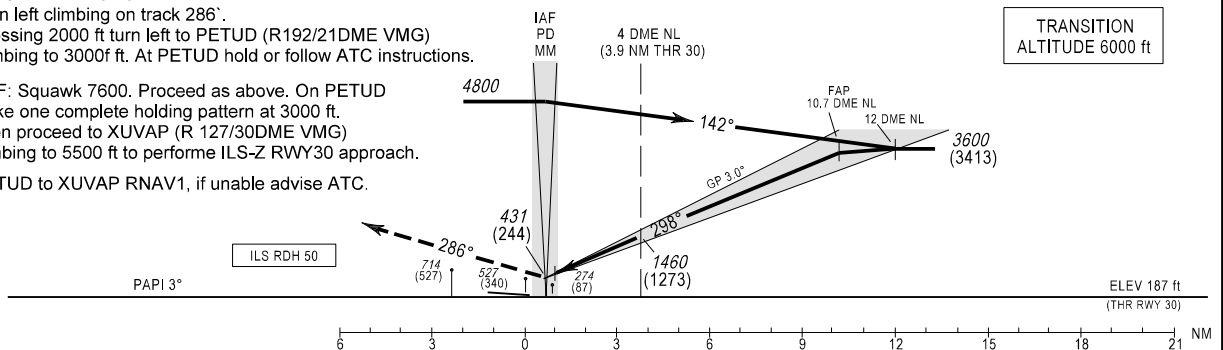
ATIS 123.900  
APP 119.400  
TWR 118.300

PONTA DELGADA, João Paulo II (LPPD)  
ILS-X  
RWY 30  
CAT C - D



Turn left climbing on track 286°. Crossing 2000 ft turn left to PETUD (R192/21DME VMG) climbing to 3000 ft. At PETUD hold or follow ATC instructions.

RCF: Squawk 7600. Proceed as above. On PETUD make one complete holding pattern at 3000 ft. Then proceed to XUVAP (R 127/30DME VMG) climbing to 5500 ft to perform ILS-Z RWY30 approach. PETUD to XUVAP RNAV1, if unable advise ATC.



MAG VAR updated.

THIS PAGE INTENTIONALLY LEFT BLANK