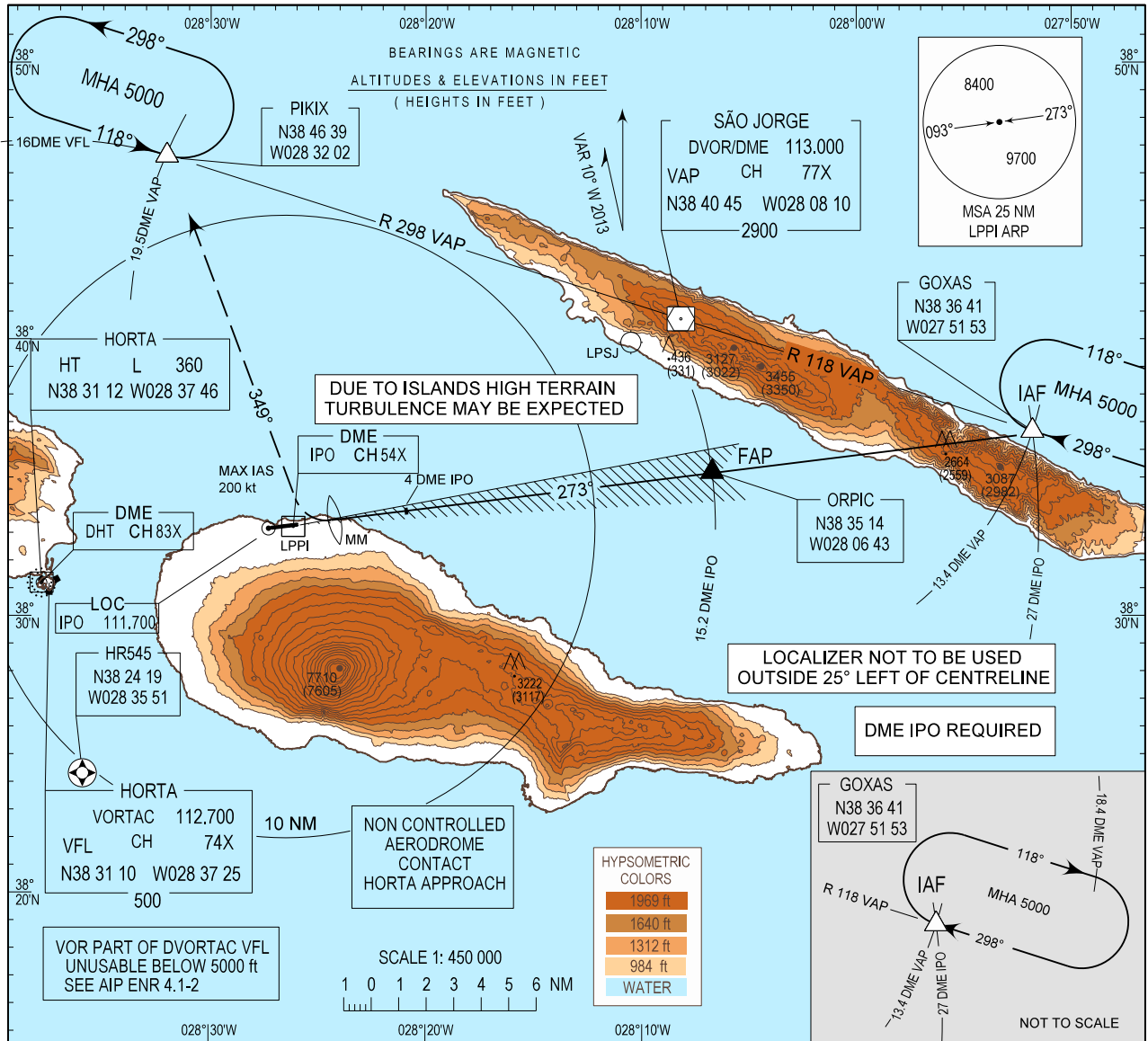


INSTRUMENT APPROACH CHART - ICAO  
AD ELEV 114 ft  
HEIGHTS RELATED  
THR RWY 27 - ELEV 105 ft

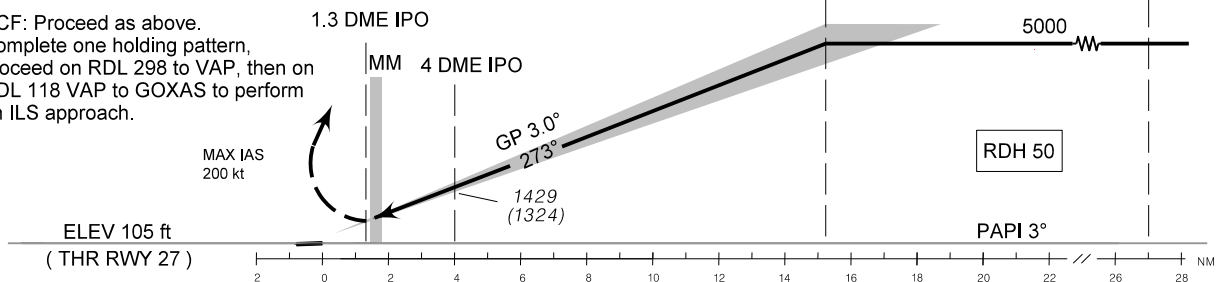
PICO INFORMATION 122.700  
HORTA APPROACH 120.600  
HORTA TOWER 118.000  
SANTA MARIA RADAR 132.150

PICO / LPPI  
ILS  
RWY27



**MISSED APPROACH:**  
At 1.3 DME IPO turn right on heading 349° climbing to 5000 ft then proceed to holding PIKIX on RDL 298 VAP. Maximum IAS on turn 200 kt. CTC Horta APP.

**RCF:** Proceed as above. Complete one holding pattern, proceed on RDL 298 to VAP, then on RDL 118 VAP to GOXAS to perform an ILS approach.



CAT	ILS CAT I		CIRCLING RWY27			
	DA/H	OCH	NORTH		SOUTH	
			MDA/H	OCH	MDA/H	OCH
A	520 (415)	407	1060 (946)	940	NOT AUTHORIZED	
B	520 (415)	407	1060 (946)	940	NOT AUTHORIZED	
C	520 (415)	407	1210 (1096)	1090	NOT AUTHORIZED	

NM	DIST DME IPO														
	2	3	4	5	6	7	8	9	10	11	12	13	14	15	
ALTITUDE (HEIGHT)	792 (687)	1110 (1005)	1429 (1324)	1747 (1642)	2066 (1961)	2384 (2279)	2703 (2598)	3021 (2916)	3340 (3235)	3658 (3553)	3976 (3871)	4295 (4190)	4613 (4508)	4932 (4827)	

New significant point ORPIC inserted.

THIS PAGE INTENTIONALLY LEFT BLANK