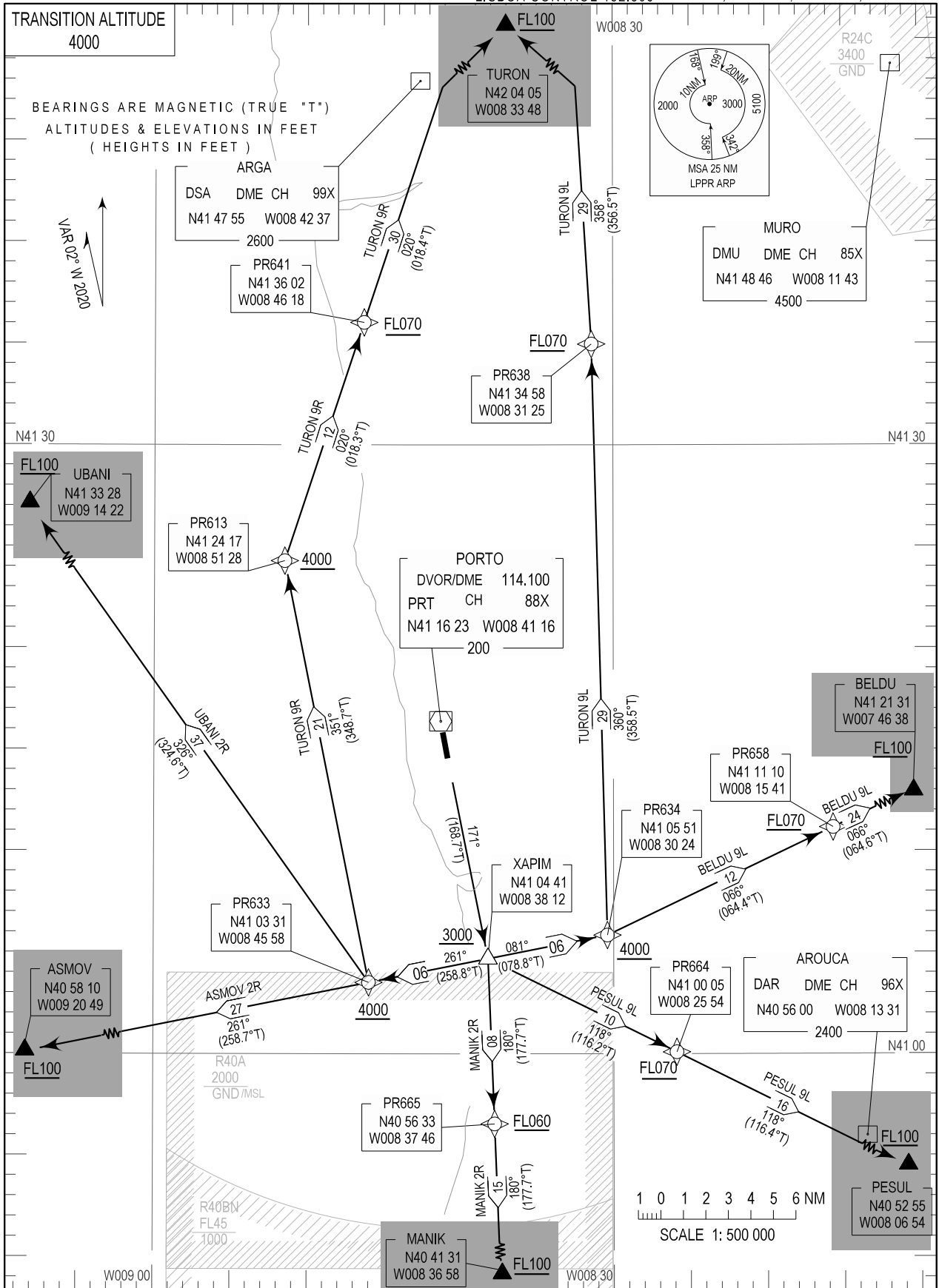


STANDARD DEPARTURE CHART - INSTRUMENT (SID) - ICAO

PORTO INFORMATION 124.305  
PORTO TOWER 118.005  
PORTO APPROACH 120.910  
LISBOA CONTROL 132.305

PORTO / LPPR  
RNAV RWY 17  
ASMOV 2R, BELDU 9L, MANIK 2R  
PESUL 9L, TURON 9L, TURON 9R, UBANI 2R



MAG VAR updated.

SID Procedure Coding Table

Path Terminator	Waypoint			Course/Track MAG(True)	Dist NM	Turn Direction	Constraints		Nav Specs	Remarks
	Identifier	Flyover	Coordinates				Level	Speed		
<b>Porto SID RNAV 1 RWY 17 – BELDU 9L</b>										
CF	XAPIM	-	410441.12N 0083811.55W	171 (168.7)	-	-	+3000ft	-	RNAV 1	
TF	PR634	-	410550.74N 0083024.43W	081 (078.8)	6.00	Left	+4000ft	-	RNAV 1	
TF	PR658	-	411109.65N 0081540.82W	066 (064.4)	12.33	Left	+FL070	-	RNAV 1	
TF	BELDU	-	412130.63N 0074638.02W	066 (064.6)	24.22	-	+FL100	-	RNAV 1	
<b>PORTO SID RNAV 1 RWY 17 – ASMOV 2R</b>										
CF	XAPIM	-	410441.12N 0083811.55W	171 (168.7)	-	-	+3000ft	-	RNAV 1	
TF	PR633	-	410330.97N 0084558.39W	261 (258.8)	6.00	Right	+4000ft	-	RNAV 1	
TF	ASMOV	-	405809.81N 0092049.33W	261 (258.7)	26.92	-	+FL100	-	RNAV 1	
<b>PORTO SID RNAV 1 RWY 17 – PESUL 9L</b>										
CF	XAPIM	-	410441.12N 0083811.55W	171 (168.7)	-	-	+3000ft	-	RNAV 1	
TF	PR664	-	410005.29N 0082553.92W	118 (116.2)	10.38	Left	+FL070	-	RNAV 1	
TF	PESUL	-	405255.32N 0080654.37W	118 (116.4)	16.08	-	+FL100	-	RNAV 1	
<b>PORTO SID RNAV 1 RWY 17 – MANIK 2R</b>										
CF	XAPIM	-	410441.12N 0083811.55W	171 (168.7)	-	-	+3000ft	-	RNAV 1	
TF	PR665	-	405632.70N 0083745.69W	180 (177.7)	8.14	Right	+FL060	-	RNAV 1	
TF	MANIK	-	404130.65N 0083658.21W	180 (177.7)	15.04	-	+FL100	-	RNAV 1	
<b>PORTO SID RNAV 1 RWY 17 – TURON 9L</b>										
CF	XAPIM	-	410441.12N 0083811.55W	171 (168.7)	-	-	+3000ft	-	RNAV 1	
TF	PR634	-	410550.74N 0083024.43W	081 (078.8)	6.00	Left	+4000ft	-	RNAV 1	
TF	PR638	-	413457.82N 0083124.66W	360 (358.5)	29.11	Left	+FL070	-	RNAV 1	
TF	TURON	-	420404.53N 0083348.30W	358 (356.5)	29.15	-	+FL100	-	RNAV 1	
<b>Porto SID RNAV 1 RWY 17 – TURON 9R</b>										
CF	XAPIM	-	410441.12N 0083811.55W	171 (168.7)	-	-	+3000ft	-	RNAV 1	
TF	PR633	-	410330.97N 0084558.39W	261 (258.8)	6.00	Right	+4000ft	-	RNAV 1	
TF	PR613	-	412417.18N 0085128.48W	351 (348.7)	21.17	Right	+4000ft	-	RNAV 1	
TF	PR641	-	413601.74N 0084618.00W	020 (018.3)	12.36	Right	+FL070	-	RNAV 1	
TF	TURON	-	420404.53N 0083348.30W	020 (018.4)	29.55	-	+FL100	-	RNAV 1	
<b>PORTO SID RNAV 1 RWY 17 – UBANI 2R</b>										
CF	XAPIM	-	410441.12N 0083811.55W	171 (168.7)	-	-	+3000ft	-	RNAV 1	
TF	PR633	-	410330.97N 0084558.39W	261 (258.8)	6.00	Right	+4000ft	-	RNAV 1	
TF	UBANI	-	413328.27N 0091422.27W	326 (324.6)	36.80	Right	+FL100	-	RNAV 1	

Porto SID RNAV 1 RWY 17

Designator	Route	After Take-off		Remarks
		Climb to ALT/FL	Contact	
BELDU9L	After take-off proceed to XAPIM. Turn left to PR634 - PR658 - BELDU.	FL100	Porto Approach 120.910 MHZ	
ASMOV2R	After take-off proceed to XAPIM. Turn right to PR633 - ASMOV.			
PESUL9L	After take-off proceed to XAPIM. Turn left to PR664 - PESUL.			
MANIK2R	After take-off proceed to XAPIM. Turn right to PR665 - MANIK.			
TURON9L	After take-off proceed to XAPIM. Turn left to PR634 - PR638 - TURON.			
TURON9R	After take-off proceed to XAPIM. Turn right to PR633 - PR613 - PR641 - TURON.			
UBANI2R	After take-off proceed to XAPIM. Turn right to PR633 - UBANI.			